

Welcome to Korea University!



KOREA UNIVERSITY

Why Korea University

WE ARE THE NEXT



The Best
Private University
in Korea

1

The Oldest
University
in Korea

1905

QS World
University
Ranking

67

The Largest Global Campus in Korea

4,230 Students from 106 Countries

International Students in Spring 2024



Undergraduate
2,232



Graduate
774



Korean Language
1,224













S104

김종철 스터디룸

JONG-CHEOL KIM STUDY ROOM

이 스터디룸은 수강생들에게서 예약을 하여, 1인
예약이든 2인 이상 예약이든 가능합니다.



A wide-angle photograph of a baseball stadium filled with spectators. The stands are packed with people, many of whom are wearing red clothing. In the foreground, several fans are standing and cheering, some with their arms raised. The baseball field is visible in the middle ground, with players on the field. The sky is clear and blue. In the top right corner, there is a red circular graphic containing the text 'Ko-yeon game'.

**Ko-yeon
game**

Ko-yeon
game



An ice hockey game in progress. A referee in a black and white striped shirt is in the center, surrounded by players from two teams: one in red and black uniforms, and the other in blue, white, and red uniforms. The players are clustered around the center ice, ready for a face-off. The background shows the white boards of the rink with a logo and some text.

Ko-yeon
game



Ko-yeon
game



Ko-yeon
game



Seoktap- daedong Festival



Ipselenti



KU

International Undergraduate Admission

International Undergraduate Admission Department Information



Content

1. Korea University Business School
2. College of Liberal Arts
3. College of Life Sciences and Biotechnology
4. College of Political Science and Economics
5. College of Science
6. College of Engineering
7. College of Medicine
8. College of Education
9. College of Nursing
10. College of Health Science
11. College of Informatics
12. College of International Studies
13. School of Art & Design
14. School of Media & Communication
15. School of Interdisciplinary Studies
16. Division of Smart Security
17. School of Psychology



College of Engineering

Dept of Chemical and Biologocal Engineering
 Dept of Mechanical Engineering
 Dept of Materials Science and Engineering
 Dept of Industrial Management Engineering
 Dept of Architecture
 Dept of Electrical Engineering
 Dept of Civil, Environmental Engineering
 Dept of Integrative Energy Engineering



College of Informatics

Dept of Computer Science and Engineering
 Dept of Data Science
 Dept of Artificial Intelligence



Korea University Business School

Dept of Business Administration

- Finance
- Accounting
- Information Systems
- Management
- Logistics, Service and Operations Mgmt
- Business Analytics
- Strategy
- Marketing
- Global Business



College of International Studies

Global Open Major Division
 Division of International Studies
 Division of Global Korean Studies

Frequency

2 times a year (March & September)

**Application
Dates**

Fall 2025 (admission on September 2025)

February – March, 2025

Spring 2026 (admission on March 2026)

early August – early September, 2025

Evaluation

100% Paper-based

Recruitment

No set quota per major

KOREA UNIVERSITY
Office of International Affairs

Korea University
한국대학교

Undergraduate Admission

Exchange Program

Visiting Program

Summer/Winter Program

Visitors at KU

- Sweden Korea Education Research Association Collaboration ... 2024.06.10
- State-Wall Medical School, United States of America/Singapo... 2024.06.09
- Ohio American Development Bank, United States of America ... 2024.06.10

KOREA UNIVERSITY
Office of International Affairs

International Admission / Admission Guide

Admission Guide

Please make sure to read the Application Guide carefully before making your application. Applicants are responsible for the acknowledgement of the information provided in the Application Guide.

This Application Guide was originally written in Korean and translated into other languages. The **Korean Application Guide** prevails in the translated application guides if any conflicts occur in the interpretation.

This application form PDF file is just for reference, so please fill out the application form on the website oia.korea.ac.kr when you apply. **Please note that the documents using this form will not be accepted.**

원서접수 전 요강과 관련 서류를 꼼꼼히 확인하시고, 모든 지원자는 요강과 관련 언어를 숙지할 의무 있습니다.
 본 요강과 관련 서류, 원서접수 요강과 관련 언어, 각 요강과 관련 언어에 대해 세부적으로 설명을 할 수 있는 기회가 있습니다.
 본 사이트 PDF 파일은 참고용입니다. 실제 지원 시에는 반드시 원서접수 홈페이지(oia.korea.ac.kr)에서 작성해 주시기 바랍니다.
 해당 지침과 요강에서 제공한 사항은 일부러라도 오타나 유착하지 않게 하십시오.

2025 Spring Semester Application Guide Download

- Application Guide Download (English) **Application Guide Download(English) ↓**
- 원서접수요강 다운로드(한국어) ↓
- 원서접수요강 다운로드(영어) ↓
- Transfer_원서접수 **Application Guide Download(English) ↓**
- 원서접수요강 다운로드(한국어) ↓
- 원서접수요강 다운로드(영어) ↓
- Document Forms (ONLY FOR REFERENCE) (저본 서류 양식) **Application Form Download(English) ↓**
- 원서접수요강 다운로드(한국어) ↓
- 원서접수요강
- Documents Submission List **Documents Submission List ↓**
- Online Application Completion **Online Application Completion ↓**
- 서류도착 확인 **Document Arrival Result ↓**

▶ How to APPLY



Eligibility – Nationality, Academic, Language Requirements

Nationality

Both the applicant and parents must be **non-Korean citizens**.

If applicant and applicant's parents have **multiple citizenship including Korean citizenship**, the applicant is **NOT eligible** to apply.

Academic Qualifications

Applicant must complete **regular primary and secondary education, equivalent to Grades 1 to 12 in the Korean education system**, either in Korea or overseas.

Home schooling, Online courses, GED(General Equivalency Diploma) or Language schools etc. from the level of primary, secondary to higher education are **NOT** accepted.

Language Proficiency

IELTS Academic, TOEFL iBT or TOPIK(Test Of Proficiency In Korean)

Applicants who have completed the **entire curriculum of secondary education in English**(or Korean) **as the primary language of instruction** must submit an official academic transcript and a letter of confirmation about English or Korean being the medium of instruction issued by the high school.

KU

Support & Scholarships

Global Service Center (GSC)

Providing assistance for International Students

Orientation Week for Freshmen

**Buddy Program, Mentoring program
(Korea University International Student Assistant)**

LTE (Learning by Teaching Experience)

International Student Festival

Visa issuance

Scholarships for International Students

Newly-admitted students	Global Leader Scholarship A	Full tuition for 1 st and 2 nd semester
	Global Leader Scholarship B	50% of tuition for 1 st and 2 nd semester
	Challenge Scholarship C	who have completed Level 5 or 6 of the KLC regular course for 1 st semester
Current students	Excellence Scholarship A	Full tuition fee for the next semester
	Excellence Scholarship B	50% of tuition fee for the next semester
	Bright Futures Scholarship	50% of tuition fee for the next semester

* Scholarship types and benefits are subject to change by Korea University

KU

International Summer Campus (ISC)
International Winter Campus (IWC)

The Largest & the best study abroad program in the world



Diverse
Course Offerings
(all in English)

over **120**

Global
Participation

more than **3,000**

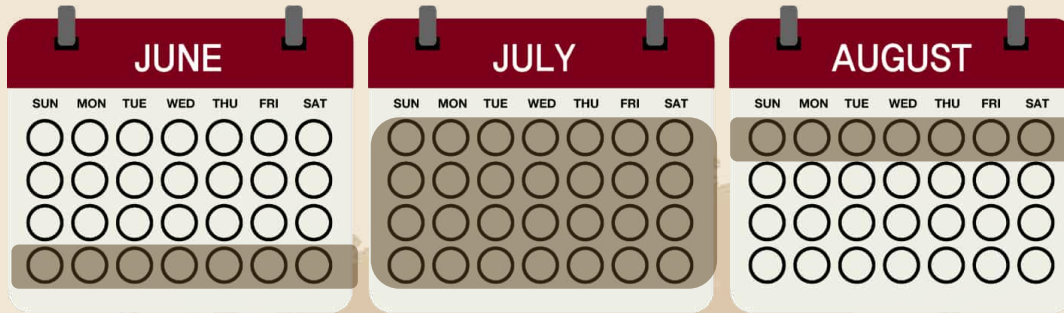
Summer
& Winter
Break

3-6 weeks

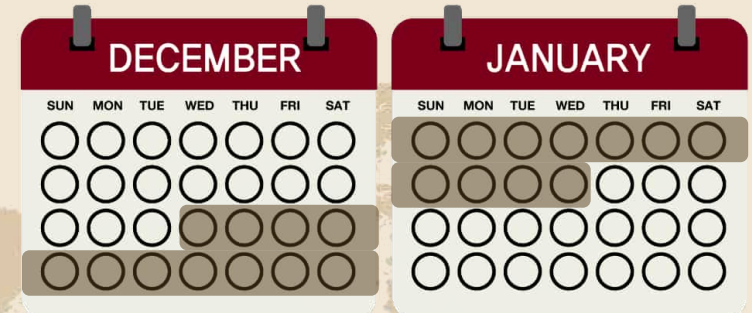
ISC & IWC are the academic programs designed for international students who wish to explore their summer & winter for both academic and cultural learning.

Program Features

International Summer Campus(ISC)



International Winter Campus(IWC)



※ Schedule is subject to change.



Period

Short-term academic session – **Summer** 4 or 6 weeks, **Winter** 3 weeks



Courses

Summer 40 Faculties and 90 courses, **Winter** 20 Faculties and 30 courses



Eligibility

Currently enrolled in an accredited college/university

Academically motivated **high school students** (aged 18 + & in year 12)



Composition

Academic credit, Cultural activities, Internship, etc

Prominent Academics

Faculty

Distinguished academics from world's top universities



Eloundou-Enyegue Parfait
Cornell University



Samarian Banerjee
Emory University



Dario Landa-Silva
University of Nottingham



Mark Davison
Brunel University London



Antonio Fiori
University of Bologna



Jamie Rhodes
University College London

- California State Univ., LA
- Portland State Univ.
- George Mason University
- Australian National University
- University of Sydney
- Georgia Institute of Technology

- Cornell University
- Florida State Univ.
- Rutgers Univ.
- University of Montreal
- Univ. of Wisconsin-Whitewater
- Brunel Uni. London

- Villanova University
- University of Nottingham
- SUNY-Binghamton
- Univ. of Bologna
- Univ. of Illinois Urbana-Champaign
- Stony Brook University

Courses

High-standard academic courses covering a wide range of subjects



Business & Economics, Humanities & Korean Studies, Politics & International Business, Social Science & Psychology, Science & Engineering, Korean Language, etc

- ✓ All courses are delivered in **English** except Korean Language class
- ✓ **Summer** 40 Faculties and 90 courses & **Winter** 20 Faculties and 30 courses

International Summer Campus(ISC) / International Winter Campus(IWC)

Cultural Experience

FREE of charge for international students!



Campus life

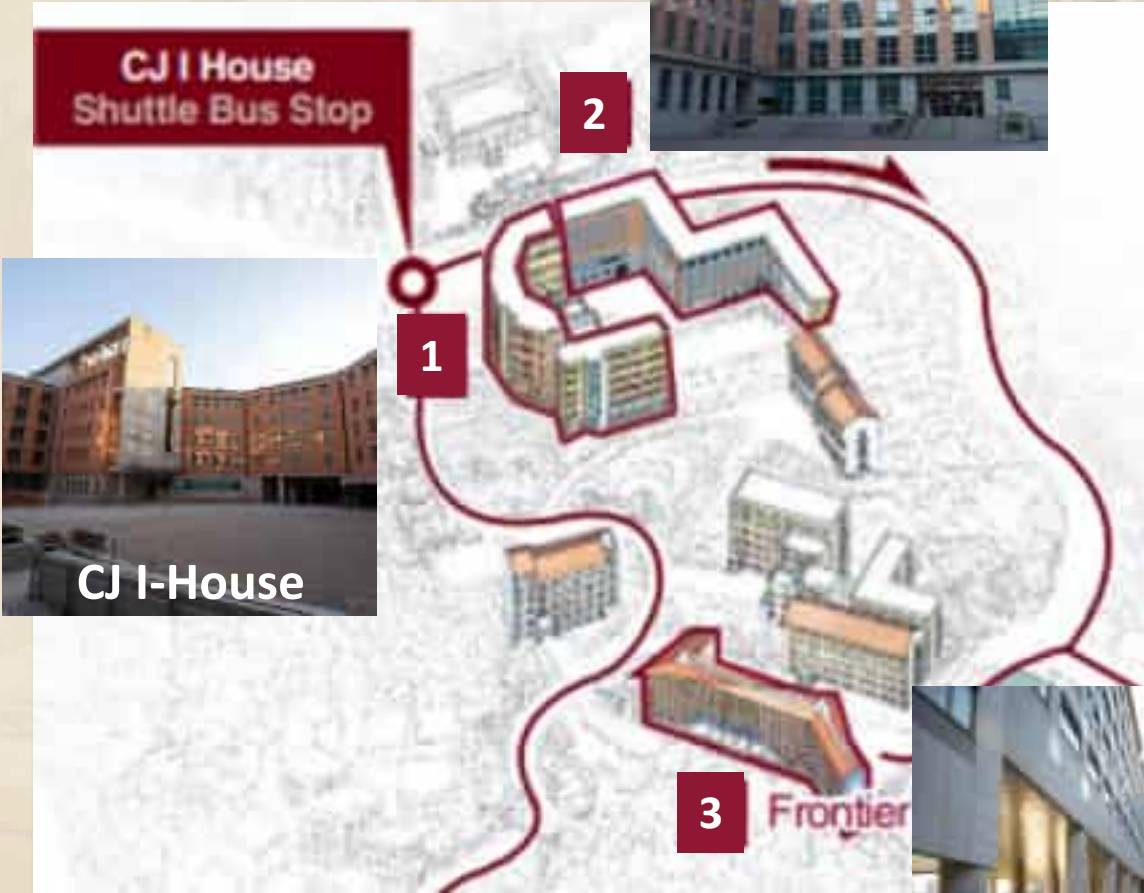
On-campus housing

- Located on campus within walking distance
- Placement in one of these dormitories is **guaranteed**
- **Shuttle Bus Service on Campus**
(Between dormitories and lecture buildings)

Anam I-House



CJ I House Shuttle Bus Stop

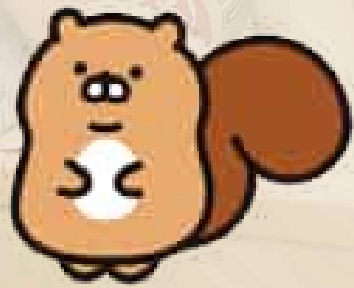


3 Frontier House



Frontier House

Very safe!



2024-2025 International Winter Campus

Schedule



Program Period

December 24, 2024 – January 10, 2025 (3W)

Application Period

September 9 – **November 15, 2024**

Early Bird Benefit Period

September 9 – **October 31, 2024**

KU ISC/IWC official

ISC Website & Email

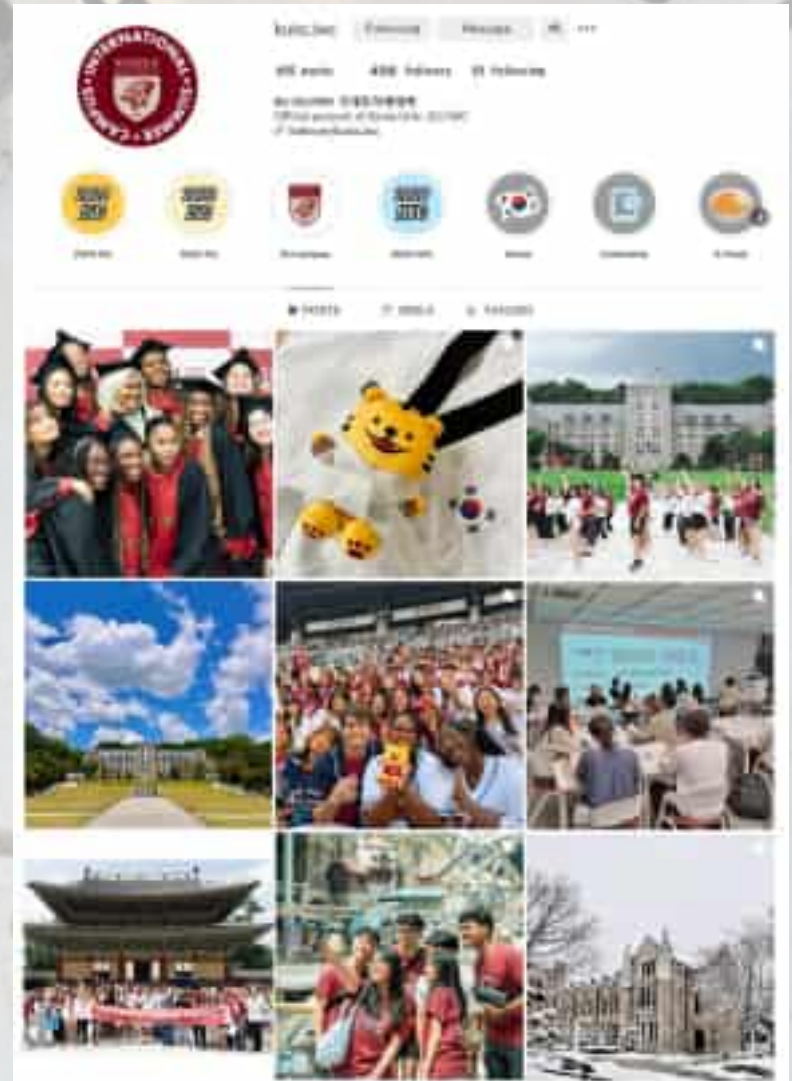
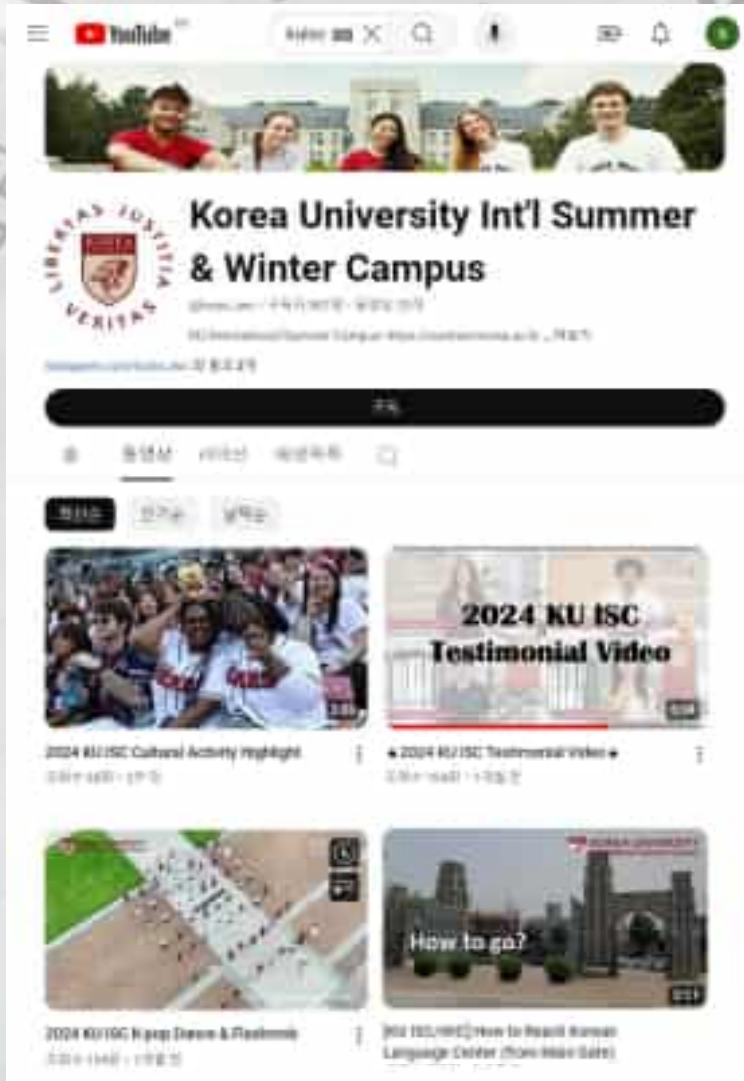
IWC Website & Email

<https://summer.korea.ac.kr/>

<https://winter2.korea.ac.kr/>

isc@korea.ac.kr

kuwinter@korea.ac.kr



 YouTube @kuisc_iwc

 Instagram @kuisc.iwc



**Office of International Affairs
(International Undergraduate Admission)**



Korea University Official