



THE BEST KU MEDICINE 2024

THE BEST KU MEDICINE



KOREA
UNIVERSITY
MEDICINE

<https://www.kumc.or.kr/en/index.do>



KOREA
UNIVERSITY
MEDICINE

Contents

- 02 The Best Medicine
- 04 The Best Campus
- 06 The Best Value
- 08 Core Strategies
- 10 Global Future Talent Training
- 12 Advancement to Being Research Hospitals
- 14 Realization of Future Medicine
- 16 The Best Social Medical Institution
- 18 World-Class KU Medicine
- 36 The Best KU Medicine

← Front cover fold-out

WORLD-CLASS KU MEDICINE

From First-Class to World-Class

Based on best medical practices, superb campuses, and the highest values, KU Medicine faces up to the questions of the times and continues to boldly progress toward the status of a world-class medical institution.



"Rooted in the vision of serving the nation through education, Korea University has evolved by creating new values at every pivotal moment in history."

1928

"KU Medicine was established on the principles of national spirit and philanthropy, and has consistently provided equitable care to all individuals through its medical practices."

← Front cover fold-out

Opening of Bosung College



Opening of Joseon Women's Medical Training Institute

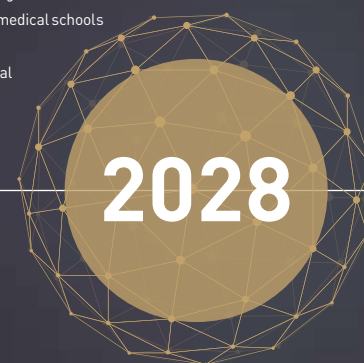
- 1959 Establishment of Korea's first Department of Neurosurgery
- 1961 Introduction of electrocardiogram device to Korea
- 1961 Korea's first transurethral surgery
- 1964 Opening of Korea's first Institute of Legal Medicine
- 1965 Introduction of arthroscopic surgery to Korea
- 1970 Establishment of Korea's first Department of Physical Medicine & Rehabilitation
- 1974 Establishment of Korea's first Department of Plastic and Reconstructive Surgery
- 1976 World-first discovery of Hantaan virus as an etiologic agent of hemorrhagic fever with renal syndrome

1983
Establishment of
KU Medicine

- 1985 Birth of the first Korean conceived through artificial insemination using frozen sperm
- 1987 World's first successful surgery to reattach all ten fingers for eight individuals
- 1988 Development of Hantavax, the world's first vaccine for hemorrhagic fever with renal syndrome
- 1994 Korea's first laparoscopic surgery for colorectal cancer in Korea
- 1998 Korea's first catheter ablation for atrial fibrillation
- 2001 Korea's first successful artificial heart implantation employing a technique developed in Korea
- 2004 Opening of Korea's first Arrhythmia Center
- 2007 Development of a new robotic surgery method, recognized as an international standard
- 2013 Korea's only medical institution having its hospitals designated as research-driven hospitals multiple times (Anam Hospital & Guro Hospital)
- 2014 Development of Korea's first cell-cultured vaccine for novel influenza viruses
- 2015 Korea's first medical institution to be evaluated by the World Federation for Medical Education(WFME)

2018
90th Anniversary of
Korea University College of
Medicine

- World's first general hospital to acquire certification as an institution conducting ISO14155-compliant clinical investigations of medical devices
- Asia's first medical institution to host the WFME World Conference
- Korea's first medical institution to implement a cloud-based hospital information system and to acquire certification by the Ministry of Health and Welfare
- Korea's first medical institution to develop its own ESG indicators and publish related reports
- Advancement to being a global medical institution with advanced infrastructure
- Realization of an advanced medical complex and global research hub
- Advancement to being one of the world's top 50 medical schools
- Launch of the "Global10 The Best" strategy
- Advancement to being a smart intelligent hospital
- Best global social medical institution



2028
100th Anniversary
of Korea University College
of Medicine

WORLD-CLASS KU MEDICINE

From First-Class to World-Class

Based on best medical practices, superb campuses, and the highest values, KU Medicine faces up to the questions of the times and continues to boldly progress toward the status of a world-class medical institution.



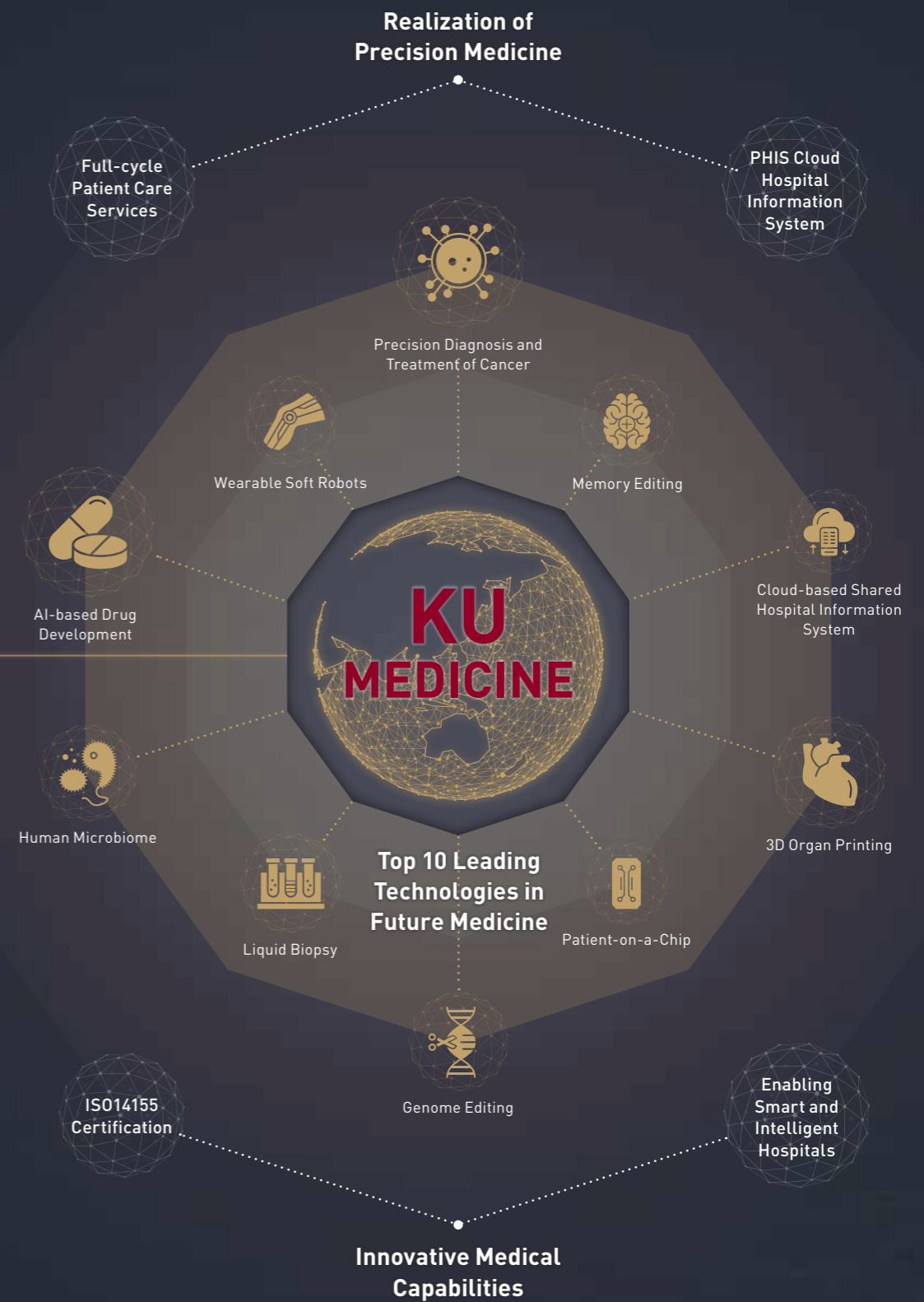
"KU Medicine, which has achieved many firsts and preeminence in many fields, is now moving into another 100 years as a world-class medical institution."

2028

THE BEST MEDICINE

Realization of World-Class KU Medicine with Best Medical Practices

KU Medicine has begun building the infrastructure necessary to achieve the goal "10 The Best," which involves ensuring its three hospitals become among the world's best in 10 key fields by 2028, the 100th anniversary of the Medical School. Moreover, it has actively invested and expanded its infrastructure in technologies that will lead future medicine in terms of precision medicine and personalized treatment. Through medical innovation and creative research, KU Medicine aims to enhance the quality of human life and take the lead in progress towards a disease-free society.



THE BEST CAMPUS



COLLEGE OF MEDICINE
Cradle of next-generation talents equipped with convergent and creative thinking capacities
Establishment of global standards in medical education



ANAM HOSPITAL
Patient-centered smart hospital
Center of the Seoul Biohub



MEDISCIENCE PARK
K-bio medical platform
Cradle for new drug and vaccine development



GURO HOSPITAL
Building a Korean-style medical Silicon Valley
Intensive care system for critical patients

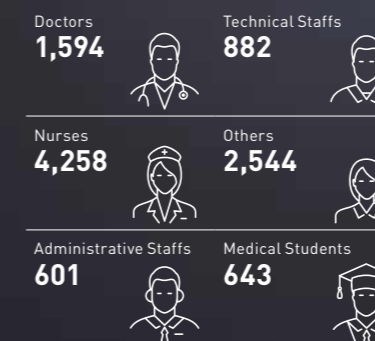


KOYOUNG CAMPUS
The Vanguard of Social Contribution
Future medicine & patient-tailored care



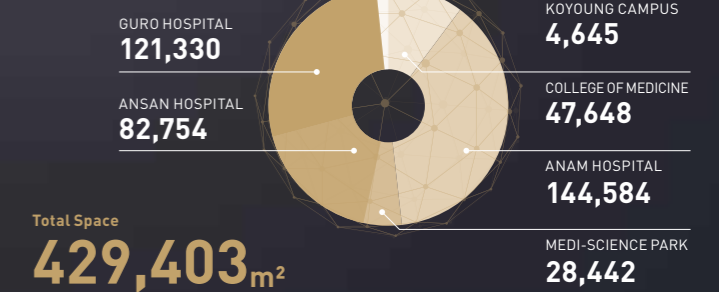
ANSAN HOSPITAL
Hub of Ansan Health City
Precision medicine & personalized medical services

Staffs & Students



Total Number
10,522
Mar 2024

Space



Beds



Patients



Realization of World-Class KU Medicine on Best Campuses

Each campus of KU Medicine trains top experts who will take the lead in various medical fields. Through the world-class KU Medicine talent training program, built on a well-structured educational program and cutting-edge infrastructure, KU Medicine will nurture the superb professionals required by the times we live in and by society, and ensure that they will not only advance KU Medicine but also drive future changes and innovations, thereby spurring next-generation national competitiveness.

THE BEST VALUE



World-Class KU Medicine, Achieving Excellence with the Highest Values

KU Medicine offers equitable care for all people through medicine, illuminating where darkness has prevailed, providing answers at each turning point in history, and realizing values beyond medicine. Continuing its commitment to the spirit of the nation and philanthropy, KU Medicine has fulfilled its roles and responsibilities as a social medical institution. Today, looking ahead to the reunification of the two Koreas, KU Medicine is preparing itself for the formation of a single health community on the Korean Peninsula, and strives to free all people from the suffering brought about by disease. Moreover, it is moving towards becoming a world-class medical institution by contributing to human society through global social contribution projects.

**BEYOND
THE MEDICINE
BY KU MEDICINE**



World-Class KU Medicine, a Leader of Future Medicine

KU Medicine is turning its vision of becoming a world-class medical institution into reality through four strategies aimed at driving forward future medicine: “education for convergent and creative thinking,” “global leadership in the biomedical industry,” “personalized precision medicine,” and “people-centered social values.”

CORE STRATEGIES FOR THE FUTURE



**Education for
Convergent and
Creative Thinking**



**Global Leader
in the Biomedical
Industry**



**Personalized
Precision Medicine**



**People-Centered
Social Values**

GLOBAL FRONTIER KU MEDICINE

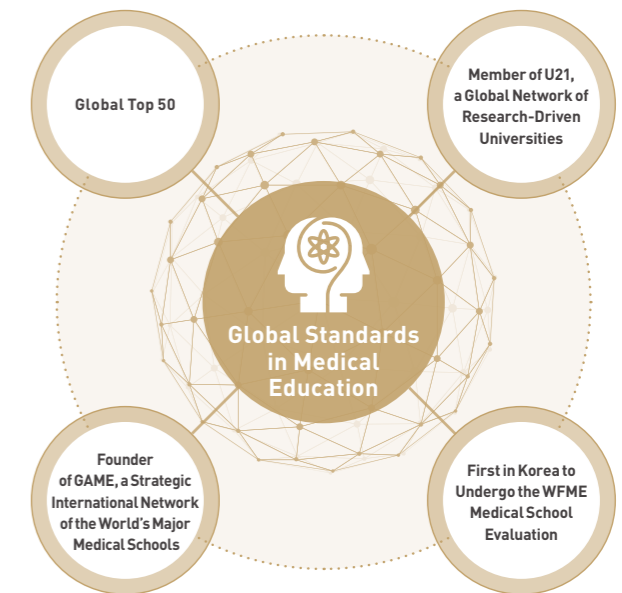


Global Future Talent Training



Cultivation of Convergent and Creative Talents

KU Medicine values respect for life and love for people, nurturing creative future medical professionals who can integrate and harmonize various specialties in alignment with these values. As the only Korean member of Universitas 21 (U21), a global network of research-driven universities, KU Medicine has established an exchange network involving 19 research-driven universities across 13 countries. In addition, to promote mutual cooperation and joint development among universities, it co-founded the Global Alliance of Medical Excellence (GAME) with eight other leading medical schools worldwide. Finally, it was the first Korean institution to undergo evaluation on the basis of WFME standards for medical schools. In 2020, it entered the ranks of the world's top 100 medical schools, and has continuously contributed to medical advancements and to setting standards in global medical education.



KU Medicine Global Campus

KU Medicine has transformed each of its affiliated hospitals, including the College of Medicine, into campuses that foster creative future talents. Anam Campus, which comprises the College of Medicine and Anam Hospital, functions as a cradle of talent, featuring the landmark Convergence Medical Center and the Seoul Biohub. Guro Campus, centered around Guro Hospital, is preparing to build a Korean-style medical Silicon Valley. Ansan Campus will enable Ansan Health City to leverage the synergy between Ansan Hospital and Ansan Science Valley. All three campuses—Anam, Guro, and Ansan—plan to offer continuing education through health and medical classes and region-specific specialized programs. Jeongneung Campus aims to contribute to Korea's vaccine sovereignty and to take the lead in preparing for emerging infectious diseases through its Vaccine Innovation Center at Medi-Science Park. Koyoung Campus is poised to solidify its position in the vanguard of Korea's bio-health sector, thereby realizing social values in various fields, including education, research, and social contribution.



SUSTAINABLE R&D ECOSYSTEM BY KU MEDICINE

- 
R&D Projects
- 
Activation of National Research Projects
- 
Industry-Hospital Collaboration Planning
- 
Research Network
- 
Technology Commercialization Support
- 
Establishment of Development Plan

Advancement to Being Research Hospitals

2

Research-driven hospitals

Korea's only single medical institution to have this distinction

21

Subsidiaries of Korea University Medical Technology Holdings

The largest number in Korea

KRW 400.7 billion

Corporate value

(as of March 1, 2024)



Korea's Premier Research Capabilities

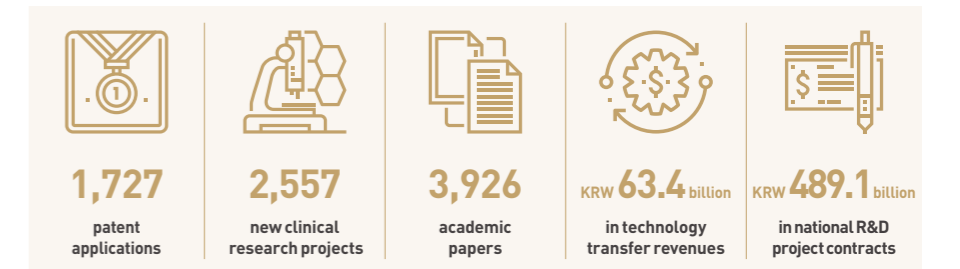
Since 2013, KU Medicine has uniquely positioned itself as the only single medical institution in Korea to have two designated research-driven hospitals, Anam Hospital and Guro Hospital. Among educational foundations in the country, Korea University is the first to establish a medical technology holding company, and currently has 21 subsidiaries, the largest number in Korea.

Biomedical Research Partnerships

KU Medicine, through continuous investments, has established advanced research infrastructure and sustainable research ecosystems where research outcomes are applied to further research, on the basis of which KU Medicine collaborates with leading research institutions worldwide. Through various joint research projects and successful commercialization of research, KU Medicine creates innovative models that contribute to job creation, economic growth, and social development, ultimately serving as a next-generation national growth engine.

Global Standard for Medical Devices

In 2019, KU Medicine became the world's first university hospital to acquire certification as an institution conducting ISO14155-compliant clinical investigations of medical devices. By partnering with KU Medicine, medical device companies aiming to expand overseas can conduct clinical investigations in Korea that meet European standards. The certification ultimately facilitates the enhancement of the quality of domestic medical devices, and effectively reduces development costs and time.



Statistics for 2019-2023

Driving towards Being a Global Hub for Clinical Research

KU Medicine aims to transform all its hospitals into research-driven hospitals, and ultimately into research hospitals. By establishing a full-cycle R&D platform, it will leverage diverse clinical experiences and convergence capabilities in order to lay a foundation that enables domestic companies to overcome technological barriers, in this way leading the development of Korea's medical industry and driving towards becoming a global hub for clinical research.

Subsidiaries of Korea University Medical Technology Holdings





REALIZING PRECISION MEDICINE BY KU MEDICINE

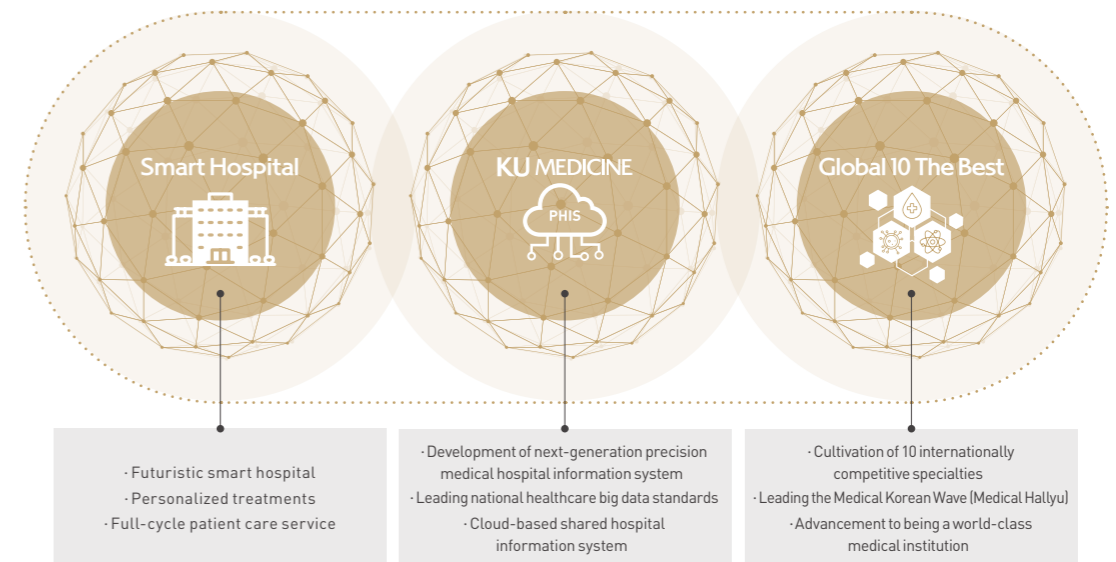
- 
Precision
Medicine
- 
AI
- 
Smart
Device
- 
Decision
Assistance
- 
Big Data
Platform
- 
Cloud
- 
5G
- 
AR/VR
- 
IoT

Realization of Future Medicine



Leading Precision Medicine in Korea

In Korea, KU Medicine is at the forefront of the drive to realize precision medicine through personalized treatments. Through the development and implementation of a cloud-based precision medical hospital information system, KU Medicine will enable free and secure data sharing between medical institutions in order to enhance patient convenience and facilitate the collection of high-quality medical big data that will promote interdisciplinary research in bio-healthcare. In addition, it plans to utilize personal health records (PHR) from various smart devices to provide personalized treatments and a full-cycle patient care service that spans pre-hospitalization visits to post-discharge care.



Global 10 The Best

KU Medicine has established its position as a leading medical institution in Korea by fulfilling its primary role of providing exemplary medical treatment. Adhering to the principles of patient-centered care and prioritization of patient welfare, KU Medicine is now implementing the "Global 10 The Best" strategy, aiming to be among the world's best in 10 key fields. It aspires to provide the world's best medical services and to become a world-class medical institution that is among the most trusted and loved by people worldwide.

Futuristic Smart Hospital

All affiliated hospitals of KU Medicine are transforming into smart hospitals based on a phased master plan. KU Medicine seeks to deliver exceptional medical care through personalized treatments tailored to each patient, using precision medicine that incorporates advanced technologies such as artificial intelligence, big data, and medical robots.





The Best Social Medical Institution



Equitable Care for Humanity

KU Medicine has been supporting socially vulnerable populations, including the medically disadvantaged, based on the spirit of philanthropy. From local communities to those abroad, KU Medicine has sought out those in need and offered its services. In particular, it has proactively fulfilled its social responsibility as a medical institution during both domestic and international crises, such as the Sewol ferry disaster, MERS outbreak, COVID-19 pandemic, and various refugee crises.

Korean Peninsula Health Community

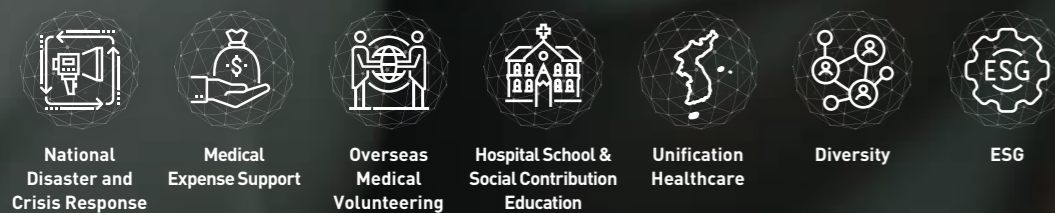
Looking ahead to the reunification of the two Koreas, KU Medicine is preparing itself for the formation of a unified health community on the Korean Peninsula. In an effort to pioneer healthcare in a unified Korea, it has opened the Healthcare Readiness Institute for a Unified Korea, and established the Department of Healthcare and Medicine for a Unified Korea in the graduate school. It also spearheads initiatives to bridge the healthcare divide between South and North Korea, and preemptively examines how the health system of a unified Korea can be optimised, which includes hosting seminars on North Korea's COVID-19 situation and the outlook for its subsequent domestic and international relations.

Expansion of Global Social Contribution Projects

KU Medicine, renowned for its diverse global social contribution activities, plans to restructure its operations to enhance these efforts and systematically expand its domestic and global social contribution activities to solidify its position as Korea's leading social medical institution creating social value. In addition, KU Medicine seeks to provide solutions to global healthcare issues, offering answers that future societies will demand.



SOCIAL VALUE CREATION BY KU MEDICINE



National Disaster and Crisis Response
 KU Medicine has led the way in delivering accurate medical information, offering policy recommendations, and building a national quarantine network during national disaster and crisis situations, such as the outbreaks of H1N1, MERS, and COVID-19.

International Healthcare Projects
 To ensure that 'No Patients Left Behind' is upheld and that everyone can live a healthy and happy life, KU Medicine runs international healthcare projects in countries around the world, including Cambodia, Malawi, Laos, Uzbekistan, Fiji, and Madagascar.

Rosetta Hall Volunteer Group
 Guided by the spirit of service that aims to ensure equitable care for all people through medicine, the Rosetta Hall Volunteer Group and its mobile clinic buses visit medically underserved areas to provide free medical services and create healthier communities.

ESG
 KU Medicine is the first medical institution in Korea to publish an ESG sustainable management report and a carbon neutrality strategy report. In addition, it has developed KUM-ESG indicators that are applicable to medical institutions and is taking the lead in achieving carbon neutrality by collaborating with the government and companies in activities aimed at improving the environment, such as recycling and waste separation.



Medical Expense Support
 KU Medicine provides medical expense support for socially vulnerable populations, including low-income households, multicultural families, North Korean defectors, and rural and fishing village residents at home and abroad, who cannot receive appropriate and timely treatments due to financial difficulties.

Korean Peninsula Health Community
 In preparation for the formation of a unified health community on the Korean Peninsula, KU Medicine publishes a dictionary of South and North Korean health and medical terminologies, and trains healthcare experts who can contribute to a healthy unification process.

Operation of Hospital Schools
 KU Medicine operates hospital schools to help children undergoing long-term treatment continue their education while receiving medical care, enabling them to grow and nurture their dreams as healthy members of society.

Friendly Medicine Social Contribution Education
 Each hospital campus operates continuing education programs tailored to local characteristics, including medical and health lectures, as well as various liberal arts lectures and activity camps. In particular, Koyoung Campus focuses on fostering medical leaders of a hyper-connected and mass society through programs such as the Future Medical Leadership Forum and the Healthcare Future Forum.

**World-Class
KU Medicine Realizing
the Value of Respect for Life**

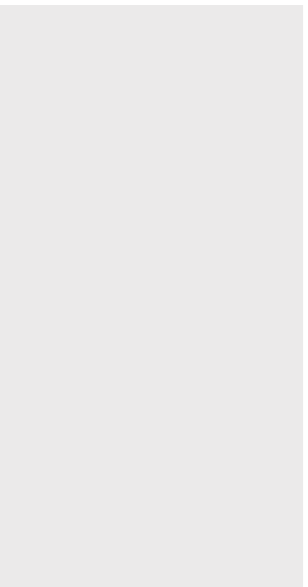
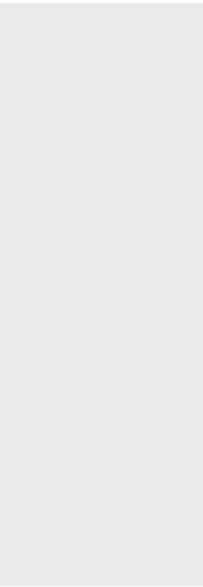
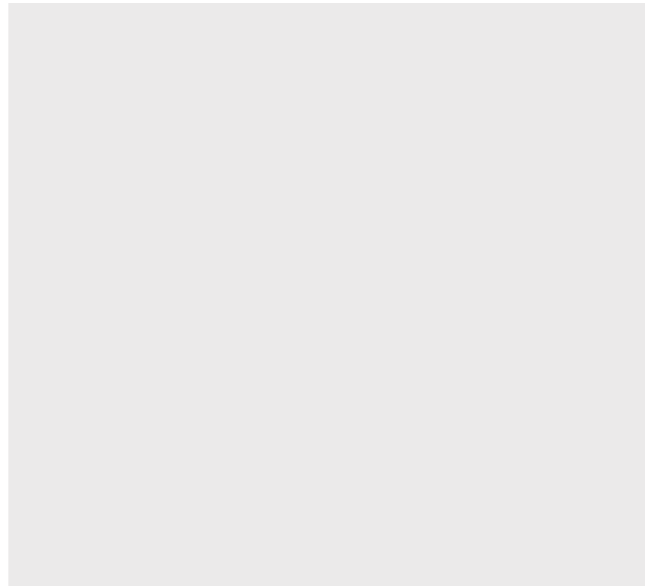




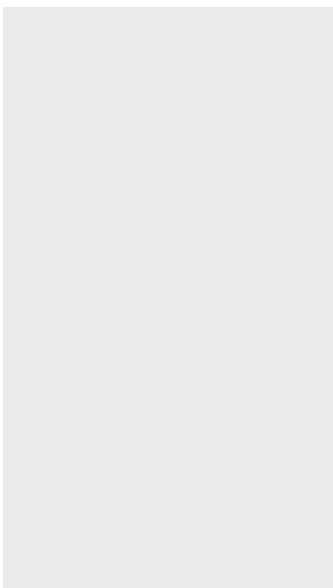
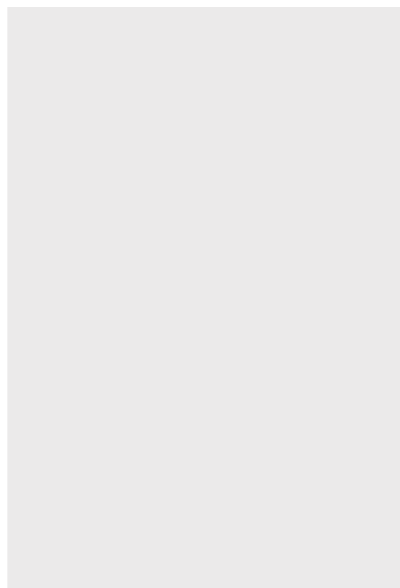
To ensure equitable care
for all people,



For the sustenance of everyone's precious life,



And in the interest of all humankind,





KU Medicine upholds
the value of respect for life.



Through a century of practicing medicine





The future brought forward through cutting-edge medical technology

KU Medicine is creating **a new path**
connecting the past and the future.

KOREA UNIVERSITY MEDICINE

MEDICAL INNOVATION

“World-Class KU Medicine Realizing Values Beyond Medicine”

KU Medicine aims to go beyond merely being **first-class** and to become a **world-class** institution that not only leads but also changes the world and creates hope.

GAME CHANGER in Healthcare system

- Connected-hospital everywhere
- Biosensor based reception
- In-hospital navigation
- Transportation robot (Chatbot)
- Smart in-patient ward
- IoT based wearable device
- Smart medication reporting system
- Patient dashboard
- AI-based imaging analysis
- Precision medicine
- Telemedicine
- Multidisciplinary care
- 3D-bioprinting
- Medical drone transportation
- Robot surgery
- Self kiosk
- Connected healthcare



Becoming Among the Most Trusted World-Class Medical Institution

KU Medicine aspires to become among the most trusted and beloved world-class medical institution not only in Korea but also globally across a wide range of fields, spanning medical treatment, research, education, and social contribution.



MEDICAL COMPLEX

- Establishment of global R&D infrastructure
- Realization of smart intelligent hospitals



PATIENT-CENTERED

- Patient-tailored personalized treatments
- Realization of precision medicine



SOCIAL RESPONSIBILITY

- Global social contribution
- Resolution of global healthcare issues



RESEARCH HOSPITAL

- Global hub for clinical research
- Leader of the bio-health industry



MEDICAL INNOVATION

- Building a smart health city
- Testbed for future medicine