

KU LEUVEN

**Is it your philosophy to
question everything?**

PHILOSOPHY

CONTENTS

01

Philosophy, something for you?

Everything you would like to know.
What do philosophers study?
Does the programme fit you?
What courses will you take?

p.8



02



What would your professional future look like?

A glimpse into your future options.
Are you being prepared for a specific job,
or are there many possibilities?
What will you be able to do?
What fields and functions will you end up in?

p.30

03



Ready to get started?

An answer to your practical questions.
What can you do to prepare?
Which administrative steps do you need
to take? When do you need to take care
of what?

p. 34

04

Studying in Belgium?

What does studying in Leuven
and living in Belgium look like?

p. 42



A university ranked in the top 100
in all global university rankings

#43

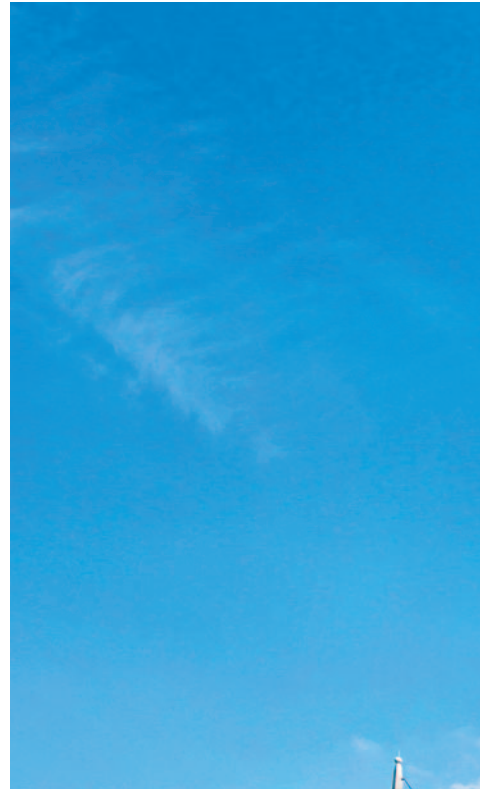
in the Times Higher Education
World University Ranking

#63

in the QS World University
Ranking

#78

in the Academic Ranking
of World Universities



Why KU Leuven

Founded in 1425, KU Leuven is home to brilliant minds set free to wonder, following their curiosity and putting their ingenuity to the test. Our 15,000+ international students can choose from more than 100 programmes taught in English. Classroom material is based on the work of more than 7,000 world-class researchers carrying out cutting-edge work in thoroughly modern facilities.

The pull to study at KU Leuven is strong, as the University enjoys a world top-50 ranking and a global reputation as a premier academic destination. But that education is made available to just about everyone willing to accept the challenge.

Students at KU Leuven pay some of the world's lowest tuition fees for a university of its calibre, ensuring that deserving talents from all economic backgrounds have access to a superb education. As a result, students from more than 150 countries now constitute a full 20% of the student body, with no one country dominating the international representation. This inclusive excellence has transformed the University into a global institution well positioned for success in the next 600 years.



The programme in 3 minutes

Philosophy is enquiry. What is the nature of knowledge, as opposed to belief or opinion? What is the nature of reality? What is the nature of the mind, and what is the best way to lead a life?

Philosophy is reflected in almost every other research domain. The empirical sciences, for instance, are home to questions around methodology, the values scientists need to hold and which research to pursue. Questions that grow and morph as we progress further in the empirical sciences. That same consideration of goals, values and processes is just as applicable in the arts, law, healthcare, politics ... there is no end to what a determined mind may consider.

Yet there are no simple answers to be found in philosophy. Questions lead to answers that give rise to more questions. The great appeal of philosophy, however, is not that it provides the seeker with answers; the strength of philosophy is that it arms the thinker with tools for grappling with these questions.

**Is politics about justice
or about power?**

**Does remembering our past
mistakes keep us from
making them in the future?**

To face down uncertainty and complexity and emerge with the kernels of wisdom that will shape our thinking for centuries to come.

The Bachelor of Philosophy is built around the history of European philosophy. This starts with a historical understanding of the foundations of thought in ancient Greece and Rome, proceeding through medieval thinkers such as Aquinas, to present-day philosophers in their myriad forms. It includes philosophical examinations of politics, ethics, and aesthetics, as well as human rights, sexuality and media. This is a broad examination of the way we live our lives, and the way we examine those lives. In the process, you determine what sort of philosopher you want to be.

KU Leuven is one of the few universities in the world where philosophy occupies an entire Faculty, meaning there is a wealth of courses and resources at your disposal.



#23

in the QS World University
Ranking (subject Philosophy)

942

students at the Higher Institute
of Philosophy

European philosophy offers a context for understanding other philosophical practices such as Chinese, Russian, Jewish and Arabic philosophy, to name but a few. European logic is taught as a foundational element, leading to an exploration of alternative systems of logic. The result is a programme that appeals to our highly diverse and international student body made up of students of all ages and backgrounds.

However you come to philosophy, and whatever life track brings you to KU Leuven, you will find here a welcoming home for the particular form of enquiry that only you can bring to bear.

**How can we act ethically in
times of climate change?**

Philosophy, something for you?

Everything you
need to know



01



An evolving field

Philosophy has grown into a branching tree of knowledge since the ancient Greeks first considered the world around them.

This tree includes Christian philosophy, the philosophy of science, contemporary continental philosophy and more.

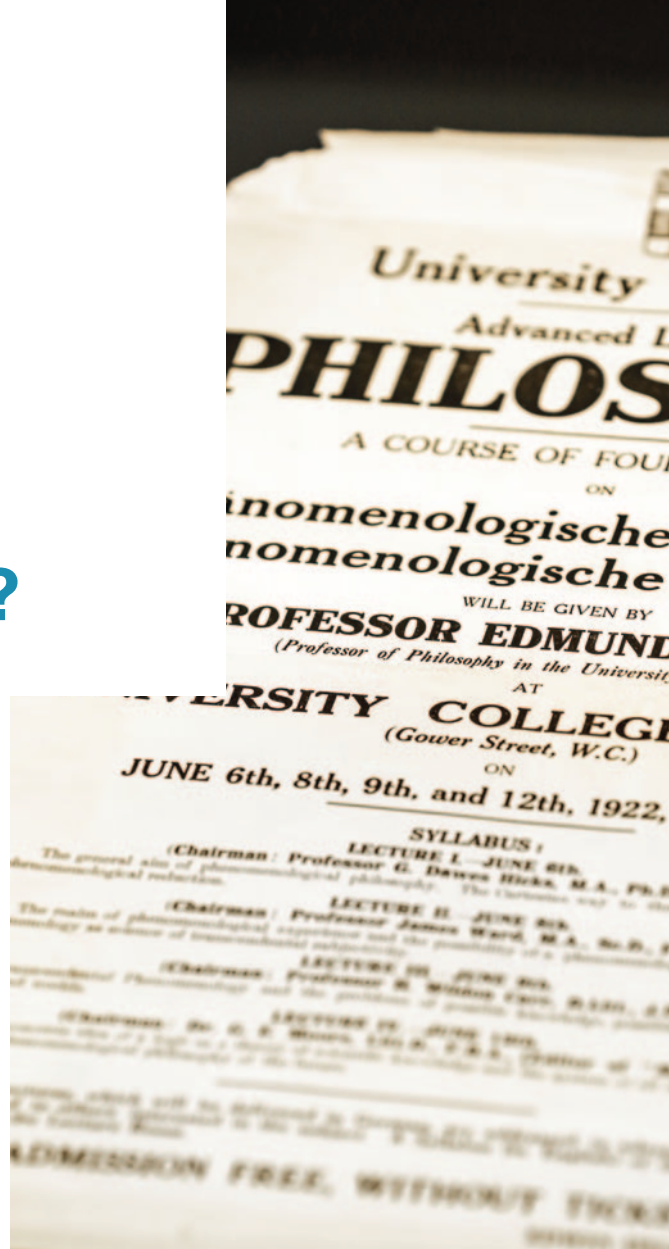
So too has there been an evolution of the teaching of philosophy. What might have once been a moribund field dedicated to the rote study of thinkers long past has revitalised itself into a field worthy of scholarly attention. Philosophers need to be able to identify a claim or a hypothesis, be able to understand their argument, come up with objections and respond to those objections in order to develop solid positions.

This rigorous approach to the domain requires philosophers to be nimble, dedicated thinkers ready to respond to the world around them.

Philosophical research has evolved as well. Research done at KU Leuven is on the cutting edge of analysis, bringing in new approaches to philosophical enquiry and often incorporating the latest findings from neuroscience, psychology and mathematical logic.

What if there were no philosophers?

- Without philosophers, our understanding of knowledge, ethics, politics, science, and society as a whole would be greatly diminished.
- Without the contributions of philosophers such as Aristotle, Descartes, and Hume, the development of scientific methodology would have been stunted, delayed or perhaps halted.
- Without philosophers, governments would have a less structured understanding of right and wrong, severely hampering the smooth operation of legal systems and societal norms.
- And without philosophers, we would have a less nuanced understanding of existence, consciousness and reality.



Husserl archive

The Husserl archive is an internationally renowned research center. It is specialised in the philosophy of phenomenology, a movement of which Edmund Husserl was one of the early founders. The manuscripts of Husserl (several tens of thousands of pages), were brought to Leuven in the 1930s. Since then they have been preserved and studied at the Higher Institute of Philosophy.



Are you a good fit for this programme?

Philosophy students need to have an inquisitive nature with a driving curiosity about life, knowledge and their own ideas. They ask questions, but moreover they seek to understand the reasoning behind foundational questions such as: Why do we do things a certain way? Why is one approach more correct than another? What does it all mean? These can be simple questions about daily life or very abstract and difficult moral questions of life, death and existence.

Diploma requirements

To be eligible for admission to the Bachelor of Philosophy, you must have access to academic higher education in the country where you completed your secondary education.

You can verify whether your secondary qualification meets the minimum eligibility criteria here:

www.kuleuven.be/eligibility-bachelor.

Students with previous academic formation may be eligible for admission to the Abridged Bachelor of Philosophy, with a reduced number of ECTS.

Language requirements

Depending on where you completed your secondary education, you either have to take one of the accepted language tests, or you are exempted from taking one.

For the most recent – and only official – information on admission requirements, check:

www.kuleuven.be/bachelor-philosophy

What does the Philosophy programme look like?

The programme is structured with a common major paired with your choice of minor.

The philosophy courses in the major (Truncus Communis) provide you with the necessary knowledge of systematic philosophy and its history and familiarise you with key philosophical topics and concepts.

At the same time, you will learn how to read and analyse texts closely, how to give well-structured presentations and how to write a clear and cogent philosophical text.

For the minor, you can choose one of the following options:

- The **Liberal Arts Minor** consists of a broad range of introductory courses in the humanities, social sciences, and natural sciences with a strong interdisciplinary component. It also offers you the opportunity to read philosophical texts in French or German or to choose more philosophical electives.
- The **Educational Studies Minor** and the **Theology and Religious Studies Minor** are offered in collaboration with the Faculty of Psychology and Educational Studies and the Faculty of Theology and Religious Studies, respectively. These minors introduce you to the basic topics and methods of the two disciplines.

If you have earned a bachelor's degree in a field other than philosophy and you have no academic background in philosophy, you are encouraged to apply for one of the Abridged Programmes, which allows you to graduate with a full Bachelor's degree in philosophy after just one or two years of study. The abridged programme consists of the philosophical core courses of the bachelor programme and the Bachelor's Paper with Seminar.

4

Learning paths

The compulsory courses consist of four groups, spread over the entire bachelor's degree programme.

1



Historical-philosophical courses

Interested in the history of philosophy? The historical introduction course deals with historical variability of the concept of philosophy. You will also receive an overview of philosophy from its origins to the present. Later in your programme, the lessons highlight the different periods in the history of philosophy in more detail: antiquity, the Middle Ages and modern times.

2



Systematic-philosophical courses

You study the basic concepts, problems and solutions of various sub-disciplines, such as ethics, anthropology and metaphysics. Of course you will also examine the historical evolution of the field.

3



Philosophical expansion

Eco-philosophy, bioethics, media ethics ... courses here build a bridge to understanding societal developments.

4 →

Philosophical skills and research

Here you will gradually learn the tricks of the trade under supervision. In the first year of the bachelor's programme, you practice finding sources for yourself in a book, academic journal or online and putting them to use. You also learn to express and argue your thoughts in writing and orally.

During the second year of the bachelor's programme, you study the relationship between philosophy and a number of themes from contemporary society: ethics and politics, science and technology, art and culture, sport, well-being, etc.

In the third year of the bachelor's programme, the focus is on your bachelor's thesis, in which you develop your own research project.

The degree programme

1

BACHELOR

ECTS

- Historical-philosophical courses
- Systematic-philosophical courses
- Philosophical expansion
- Philosophical skills and research

→ Historical Introduction to Philosophy	6
→ Logic	6
→ Ethics	6
→ Epistemology and Philosophy of Science	6
→ Continental Philosophy	6
→ Research and Writing in Philosophy	6
Minor	24

Check the details
of your study
programme online

www.kuleuven.be/bachelor-philosophy



2

BACHELOR

ECTS

→ Ancient Philosophy	6
→ Medieval Philosophy	6
→ Philosophy of Mind	6
→ Philosophical Anthropology: Continental Approaches	6
→ Metaphysics	6
→ Political Philosophy	6
→ Philosophy and the Contemporary World	4
Minor	20

3

BACHELOR

ECTS

→ Modern Philosophy	9
→ Phenomenology	6
→ Analytic Philosophy and Philosophy of Language	6
→ Bachelor's Paper with Seminar	12
→ Philosophical Electives	8
→ European Perspectives on Religion and Meaning	3
Minor	16

What will your classes look like?

At KU Leuven, there are a variety of teaching methods, sometimes in large groups, sometimes in smaller ones. The basics of many courses are taught in lectures. Group work, seminars and flipped classrooms all challenge you to get to work yourself. These interactive working methods will help get to know your fellow classmates quickly, allow you to ask any questions you might have and find the necessary support.



Lecture

More or less every course will feature a lecture form for the most part, with a secondary seminar component being very common. During the lectures, a professor will present to a large group of students the primary ideas and thinkers in the specific subject of the course. The content of the lectures then serves as the starting point for the more interactive secondary class format.



Reading seminar

During this seminar, an assistant lecturer will guide students through selected texts, fleshing out a specific concept or author already covered in the main lecture series. This format is only used in the first year, since students are still developing their philosophical skills and require support to delve into the finer details of the selected texts.

Combining studies with a student job is quite challenging and may affect your study results. When calculating your budget, we advise you not to count on income from a student job. The number of available jobs is limited, and most jobs require fluent knowledge of Dutch (or French), making it very difficult to find a student job.



Seminar

From the second year on, students in seminar classes will be expected to develop larger research and writing projects (sometimes one paper spanning a whole semester) and be able to independently process philosophical texts and discuss them with classmates. During the seminar classes, an assistant lecturer guides the students - in a smaller group - through a specific theme. Students are usually expected to process texts/chapters/fragments in advance, and the class itself will consist mostly of smaller group discussions on several provided questions.



Exercises

This form is used in the first year courses 'Logic' and 'Research & Writing in Philosophy'. In the first case, an assistant lecturer will guide the students (in large groups no different from the lecture classes) through sample logical statements and expositions. In the second case, students will process class material independently beforehand and then practice philosophical skills (debating, writing, research) in (sometimes much) smaller groups during the classes.

Courses in the first bachelor's stage

Logic

The overall goal of this course is to introduce students to logic, on the one hand as an independent scientific discipline, and on the other hand as a methodological foundation for their further philosophical education.



Ethics

This course will outline the development of ethical behaviour and ethical thinking in the West in historical terms. That is, it will consider the major positions we inherit from the tradition of reflection on virtues, duties, moral justification, the nature of norms and values, beliefs about the relation between morality and religion, morality and culture, morality and society, etc.



Epistemology and Philosophy of Science

The aim of the course is to introduce students to central topics and methods in contemporary epistemology (what is scientific reasoning, progress, and its limits?) and philosophy of science (what is scientific reasoning, progress, and its limits?).



Continental Philosophy

This course is a first introduction into the domain of continental philosophy, in its various thematic domains and problems. The central question of this course is: what are the most

important themes in continental philosophy and which concepts and authors are necessary to understand the most important evolutions in continental philosophy?

We discuss the following schools and debates: phenomenology, deconstruction, structuralism, post-structuralism, critical theory, post-modernism, linguistic turn, psychoanalysis, post-colonialism and feminism.



Historical Introduction to Philosophy

In this course an attempt is made to understand the nature of philosophy as it manifests itself throughout its history from Greek antiquity up to the present day. Introducing some relevant figures and works from the history of Western philosophy, we shall see the kind of questions thinkers have asked, the interplay of philosophy and sciences, as well as the conversation of philosophy with fine arts and religion. References to, and comparisons with, 'non-Western' intellectual traditions are made as well.



Research and Writing in Philosophy

The course Research and Writing in Philosophy aims to teach students the necessary academic skills to function independently as a philosopher. We train reading, oral, writing, research and argumentation skills.

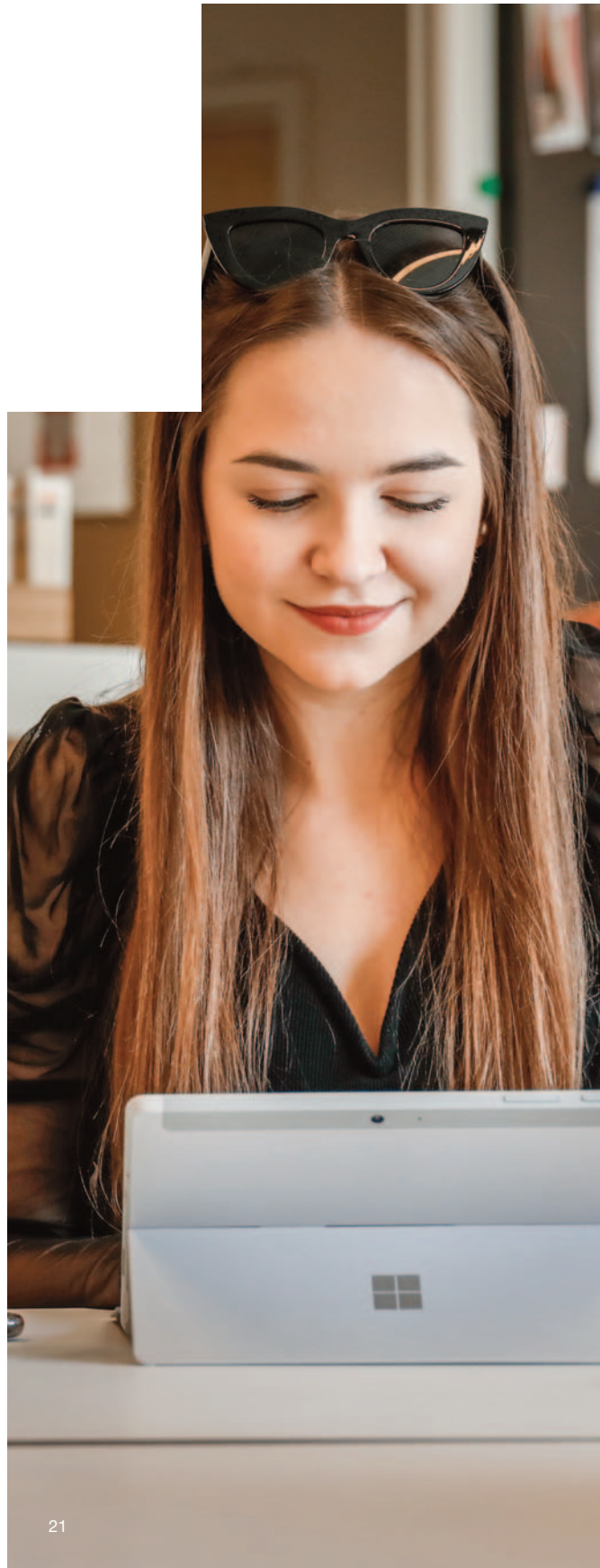


Putting the programme into practice

Voluntary internships are available with companies in and around Leuven. A voluntary internship is an extracurricular internship undertaken on the student's own initiative. The internship is carried out in the context of your study programme at KU Leuven, but it is not an official part of the study programme.

A voluntary internship adds invaluable practical experience to your CV. You gain time in a work environment, get a taste of the professional field and acquire specific knowledge and skills. You also build a network within a particular sector and organisation.

www.kuleuven.be/internships



— Planning to succeed

AGENDA

MO
TU

This schedule represents a typical week for a student who has chosen the Liberal Arts (language track French) minor. As you can see, studying is considered a full-time job.

MONDAY

11.00 - 13.00	Sociology (minor course)
14.00 - 16.00	Preparation for the classes Logic & Historical Introduction to Philosophy
16.00 - 18.00	Logic: Exercises
18.00 - 20.00	Historical Introduction to Philosophy

TUESDAY

9.00 - 11.00	Refreshing the previous Logic: exercises session
11.00 - 13.00	StudyLab session: Historical Introduction to Philosophy
14.00 - 16.00	Processing the previous Sociology class
16.00 - 18.00	French for Reading Knowledge: Beginner's level (minor course)



WE

WEDNESDAY

10.00 - 12.00	Processing the previous Historical Introduction to Philosophy class
13.00 - 15.00	Preparing for the next Logic class
16.00 - 18.00	Logic
18.00 - 20.00	Historical Introduction to Philosophy

TH

THURSDAY

9.00 - 11.00	Descriptive and Inferential Statistics (minor course)
11.00 - 13.00	Research & Writing in Philosophy:
14.00 - 16.00	Processing the previous Descriptive and Inferential Statistics class

FR

FRIDAY

10.00 - 16.00	Independent work on the paper assignment for Research & Writing in Philosophy
---------------	-------------------------------------------------------------------------------

SA

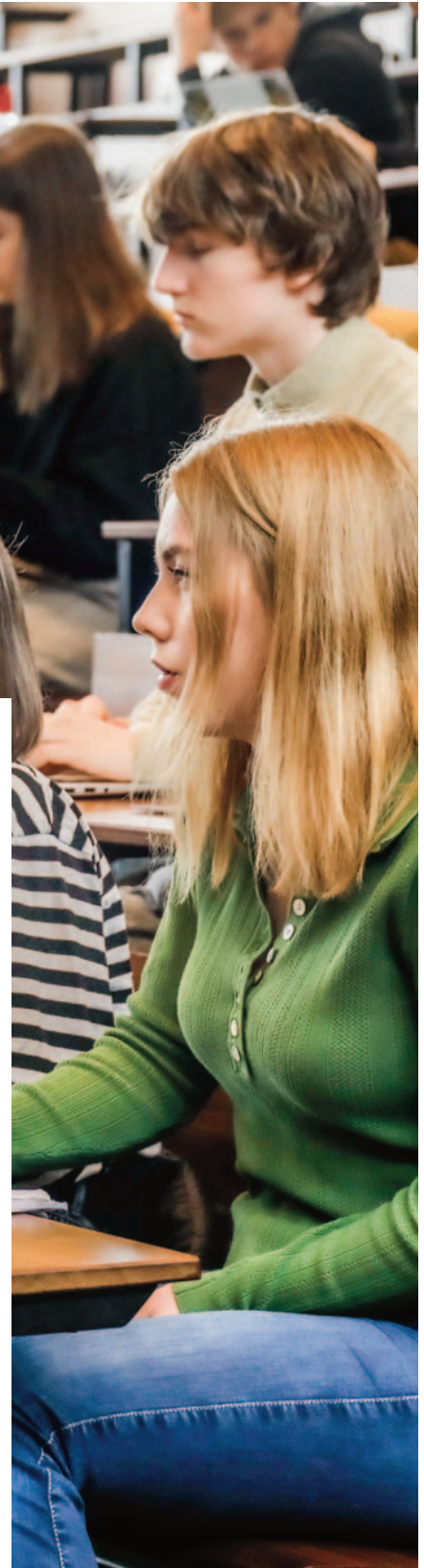
SATURDAY

14.00 - 16.00	Processing the previous Historical Introduction to Philosophy class
---------------	---------------------------------------------------------------------

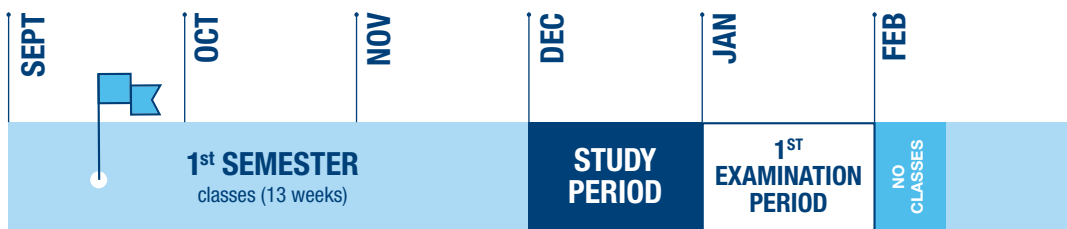
SU

SUNDAY

16.00 - 18.00	Processing the previous Logic class
---------------	-------------------------------------



One academic year in profile



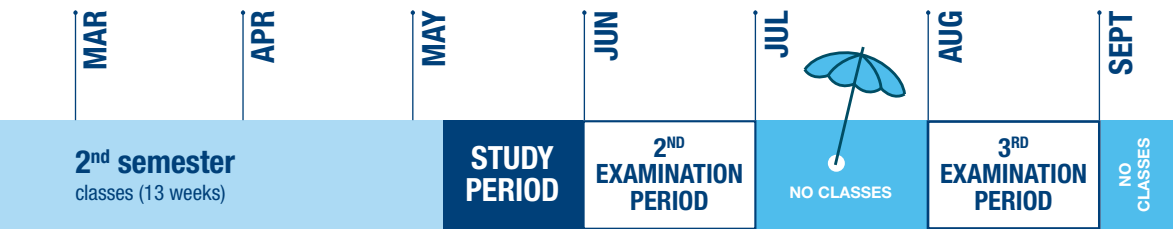
**Feedback
from your
study advisor**

Structure of the academic year

One semester consists of 13 weeks of classes, followed by a study period in which you can prepare yourself for your examination period. There are two semesters in one academic year.

Student guidance

Your first point of contact is the study advisor for your programme. If necessary, they will refer you to specialist services within KU Leuven. You will find that KU Leuven offers a great deal of personal autonomy, in that you will be responsible for initiating communications about well-being. But when you do reach out to us, you can count on personal guidance and care for all possible questions: study choice, study method and planning, subject-related questions, psycho-social well-being, your study path, etc.



Feedback from your study advisor

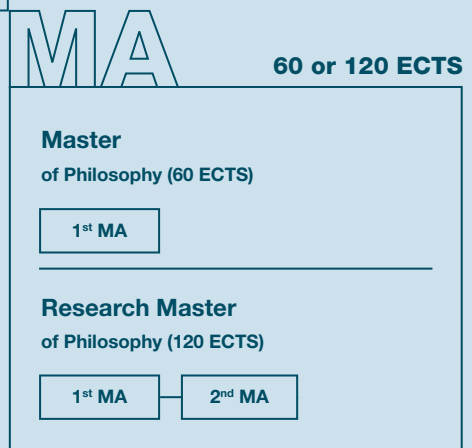
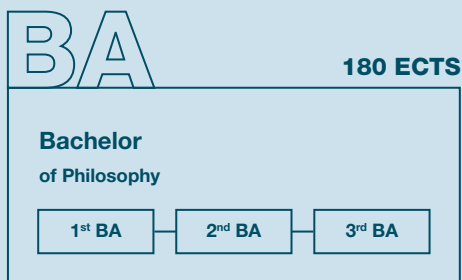
Feedback from your study advisor

Exams

You will take an exam for each course at the end of the semester in January and in June. These exams are quite difficult. You will get another chance to retake any failed exams during the third examination period in August-September. If you do pass all of your exams then you get to enjoy a long summer vacation!

Studying together

One of the best ways to avoid distractions and gain valuable feedback is by studying in groups. Studying together has become increasingly popular. It inspires you and motivates you to study better, with your fellow students serving as a sounding board for challenges and helping you through difficult material. Group study locations are available in our libraries and faculty buildings.



Credits (ECTS)

Credits indicate the size of a course (e.g., 180 credits) or a course unit (e.g., 5 credits).

One credit corresponds to 25 to 30 hours of study time (the time an average student should spend on that course unit: including class attendance, preparation, studying and research).

A total of 60 credits corresponds to one year of full-time study.

Bachelor's-master's progression

Bachelor's programmes at KU Leuven are three-year degrees of 180 ECTS credits. Programmes are divided into three stages, one for each year of the programme. Consequently, students are expected to reach each stage in good order and in good time. This means that the first bachelor's stage is reached in one year of study, the second in two years, and the third in three. Each stage allows the University the opportunity to verify a student's progress and see whether there are any issues in the smooth progression towards earning the degree. Your course and examination schedules will be set based on your progression through the three bachelor's stages.

Whilst the bachelor's degree is to be completed in three years, undergraduate education in Belgium is considered to include a master's degree, which is a programme of 60 ECTS to be completed in one year or 120 ECTS to be completed in two years. This differs from many countries around the world where a master's is considered a part of graduate education. The combination of a master's with the bachelor's degree ensures that students in Belgium reach a high degree of competency within their chosen academic field. The master's also allows students to complete a master's thesis, which will serve as a demonstration of skill and ability after graduation. It is not strictly required to pursue a master's after attaining a bachelor's degree in Belgium, but it is expected and highly encouraged.

After your bachelor's degree

Master of Philosophy

60 ECTS

The aim of the master's programme is to deepen your philosophical knowledge and to further develop your research skills in philosophy by exposing you to more advanced, more detailed and more specialised studies in the core domains of philosophy and its history.

In terms of structure, the master's programme provides a broad range of advanced courses whilst allowing you to focus on specific areas of philosophy and hence to begin to develop your own specialisation. At the end of the programme, you will be able to make a thorough and critical analysis of philosophical texts, to situate these texts in the history of ideas, and to conduct research at an advanced level, culminating in a master's thesis that allows you to present your own analysis of a specific philosophical topic. This programme can be followed on a full-time or part-time basis.

www.kuleuven.be/master-philosophy

Research Master of Philosophy

60 or 120 ECTS

The Research Master of Philosophy programme is primarily research-oriented and functions as a preparation for the doctoral programme.

This master allows you to specialise in a particular philosophical domain. It consists of courses and seminars on an advanced, research-oriented level and the writing of a research-based thesis.

The Institute of Philosophy offers two research master's programmes: the two-year Research Master of Philosophy programme of 120 ECTS credits and the one-year Abridged programme of 60 ECTS credits. To be eligible for the research master's programme you should have already obtained a bachelor degree in philosophy with good results or an equivalent academic degree. If you have already earned a master's in philosophy, and are seriously thinking about philosophy as a career, you might be eligible for our Research Master's Abridged Programme.



The courses and research seminars that constitute the programme are grouped into five majors:

- Ancient, Medieval and Renaissance Philosophy
- Metaphysics and Philosophy of Culture
- Phenomenology and Continental Philosophy
- Political Philosophy and Ethics
- Analytic Philosophy

www.kuleuven.be/research-master-philosophy

Other masters

Master of Theology and Religious Studies (60 ECTS)

If you chose the Theology and Religious Studies Minor in the bachelor, you can start this master after completing the Abridged Bachelor of Theology and Religious Studies (at least 30 ECTS).

Master of Educational Studies (60 ECTS)

If you chose the Educational Studies Minor, you can directly start with this master after successfully completing the bachelor. If you did not follow this minor, you can start this master after a preparatory programme of 60 ECTS.

Master of Social and Cultural Anthropology (120 ECTS)

What would your professional future look like?

All opportunities
with your degree

02





Erin Oslo - PhD student at Princeton

"My time at KU Leuven was very useful for my applications to doctoral programmes in the United States. My exposure to the varied research interest of my professors there, made me a more well-rounded and well-versed philosopher. And having studied at the Institute, I had the chance to connect with professors and graduate students from all over Europe, which has fostered fruitful professional and personal connections."

Tinati Maisuradze - Life and Career Coach

"Even if you do not yet realise, during philosophy education you have learned plenty of skills which are in high demand such as analytical thinking, research, understanding of abstract concepts, etc. Decide what kind of work would be preferable and map how those skills are useful for the potential jobs. Also, keep a professional attitude and an open mind, every employer appreciates it – so a great job is not too far."

Christopher Johnson - Director of Technology and Insights

"Embrace your differences. In a tight job market, your academic achievements can help you stand out from your peers. Be sure to note them in applications and reference them in interviews – but make sure you know how to relate them to a non-academic audience! They probably won't care about what you know about Hegel or Deleuze, but they will definitely care about your ability to ask questions, question assumptions, solve problems, and think critically and independently."





Your diploma is the starting point ... you shape your career

The whole world is open to those with an inquisitive mind and focused determination. Given rapid changes in technology and industry, employers nowadays need people who are good independent thinkers, who can grasp patterns and expand their preconceptions to include new and different ideas. Pair this mindset with an ability to write well, to present and defend various viewpoints, to understand arguments and complex materials and it is easy to see how a philosophy graduate can find themselves in any number of fascinating careers.

Philosophy graduates often end up pursuing advanced degrees in specialties they either sampled during their elective courses or studied in depth as part of their minor. These fields are vast and varied and include law, religion, government and journalism. Applied philosophy has found a home amongst ethicists in the medical and healthcare fields, as well as emerging industries such as artificial intelligence. Many philosophy graduates will go on to become teachers, some in the field of philosophy itself, but most in a wide range of other academic domains.

Ready to get started?

An answer to your practical questions



03

Get prepared for a smooth start

Orientation test

It is important to choose a field of study that is right for you and to be sufficiently informed before registering for a specific programme. After all, as a student, you are committing yourself to your choice! This orientation test will give you a sense of the content of our study program and the required level of academic skills. By answering questions from different subdomains within philosophy, you will get an approximate picture of the whole programme. However, the test is by no means a prediction of your chances of success!

www.hiw.kuleuven.be/orientationtest

Open Online Courses in Philosophy

The main aim of the open online courses is to enable prospective students to prepare themselves for their pursuit of obtaining a degree in philosophy at the KU Leuven. At KU Leuven you will get in touch with a wide range of philosophical disciplines. If you feel like your academic trajectory lacks basic logic, epistemology, medieval philosophy, phenomenology or political philosophy and you want to be prepared, this is the right place for you. Every course consists of a number of (topical) units. Every unit entails a 'watch', 'read', 'practice' section. After watching the web lecture, you are asked to read a book chapter, an article or a lemma. Depending on the specific discipline you are then expected to put the material into practice. Finally, the 'Want to know more?'-section offers extra material.

www.hiw.kuleuven.be/oocp

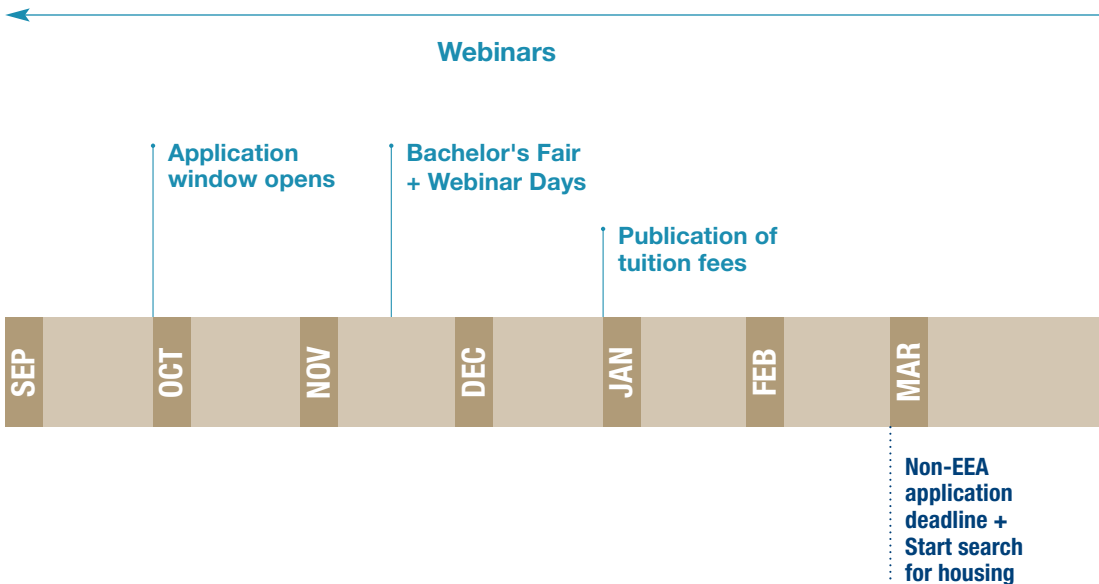


Additional care

Everyone should be able to study, even if this seems less obvious due to a disability, learning disorder, medical problem, etc. You can make use of support facilities both during the academic year and during exam periods. Be sure to apply to have your status recognised in a timely manner so you can work with our disability officer to find solutions tailored to your needs.

www.kuleuven.be/studentswithadisability

The year preceding enrolment



Application deadlines

The deadline for this programme for non-EEA applicants is 1 March. EEA applicants and non-EEA applicants holding a Belgian residence permit can apply until 1 June. Late submission of applications will not be considered.

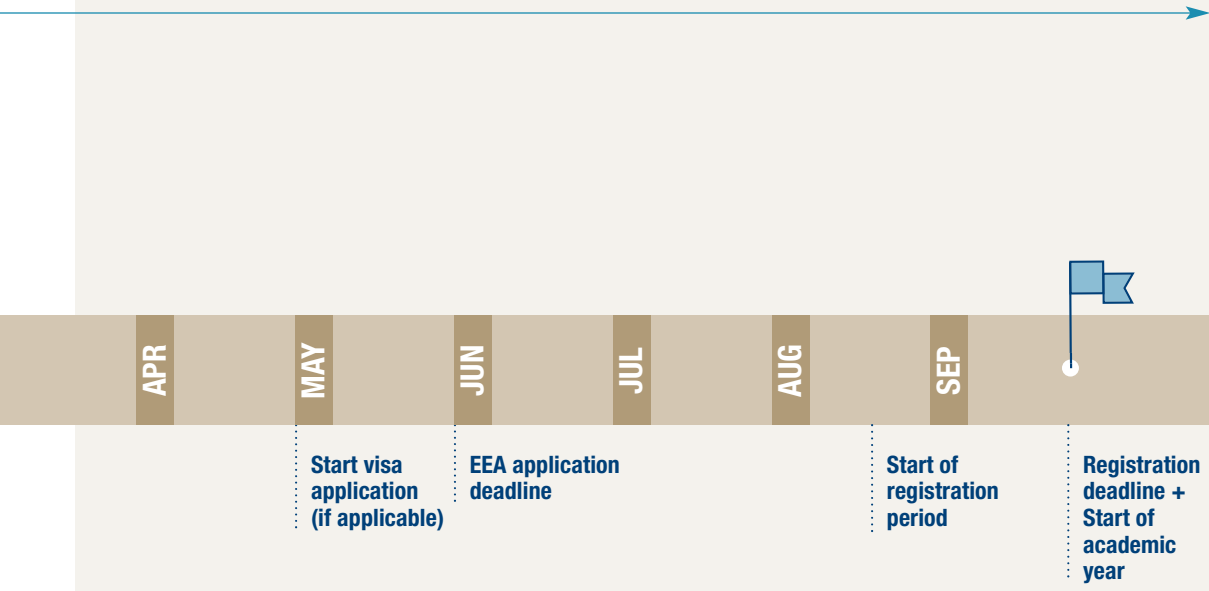
For the most recent - and only official - information on application deadlines check

www.kuleuven.be/application-windows

Bachelor's Fair

At this live info fair, you can ask all your questions about our international bachelor's programmes. Our staff will answer all your questions about studying in Belgium and KU Leuven, and you can also ask questions about your application or admissions.

www.kuleuven.be/open-days



Webinars

KU Leuven offers webinars on a range of topics to aid you in the process of choosing a university, applying for a programme, searching for housing, obtaining a student visa and preparing your arrival. In November, we have a special two-day event called 'Webinar Days' where you have the unique opportunity to follow a webinar about your desired field of study. There is always room for your questions during the Q&A part of the webinar.

www.kuleuven.be/webinars

Tuition fees

It is worth noting that our tuition fees are more affordable than in many other European countries thanks to generous government financing of the higher education system. Although all of our programmes are very affordable compared to equivalent universities around the world, the fees for any individual student are contingent upon their choice of academic programme and the nationality of the student. Check out our tuition fees for your particular programme:

www.kuleuven.be/tuitionfees

Application procedure

KU Leuven uses an online application system. You will make a personal admissions account and upload the required documents.

At this stage, questions about application procedures are best directed to the Admissions Office. You can then submit your application once you are ready.

www.kuleuven.be/application

Students with a Flemish degree can consult:

www.kuleuven.be/register-flemish-degree

Visa application

As an internationally oriented university, it is our aim to support our international students the best we can. When coming to Belgium, you may need a visa or entry document.

The specific documents you will need, and the manner in which you request and submit them, will depend on your situation. Once you are admitted to study at KU Leuven, you will receive specific information and guidance for your situation from our international expert services.

www.kuleuven.be/immigration

Housing

Leuven offers a variety of different housing opportunities. The most important consideration is to start looking for housing as soon as possible. Planning to start in September? Then the early part of the year is great time to get a sense of what will be available in the autumn, even if you have not yet received your acceptance letter.

Most students choose to rent a student room (known as a 'kot' in Dutch) in a privately-owned house with shared common spaces and facilities. Look for student accommodations that have earned the 'Kotlabel', which ensures that the landlord and the building comply with norms regarding the quality of living, fire safety, contract and student friendliness. If you need any help with this, you can contact Stuvo, the KU Leuven Housing Service, for assistance.

The University also owns and manages a number of student residences. A limited number of rooms in these residences are reserved for international students.

www.kuleuven.be/housing



Studying in Belgium?

Everything you need
to know about living and
studying in Belgium



04



Study in Leuven

Leuven is a true university city where student life stands central. As the oldest, largest and most academically diverse of our campuses, Leuven attracts an eclectic set of international students following a wide array of academic pursuits. There is no defined campus in Leuven; instead, University buildings and student residences are spread throughout the compact city. This setup is facilitated by Leuven's reputation as a safe place to live and socialise, ensuring that students feel free to enjoy an academic experience rich in possibility, from the quiet and calm of the University Libraries to the lively comradery of our student clubs. The large international student community in Leuven revolves around the Pangaea intercultural meeting centre but extends to every corner of this historic campus. In all these ways and more, Leuven can justifiably be said to deliver the true student experience.

Living in Belgium

Belgium is a safe and peaceful country steeped in history and fully engaged in our modern world. Possessed of an advanced economy with special emphasis on medicine and medical technology, Belgium is one of the world's leaders in education, design and shipping. Belgium straddles the line between French and Germanic cultures, but Belgian people generally speak English quite well, so there is no need to learn another language. Belgium is the gateway to Europe. There are fast train connections to major European cities like London, Paris or Amsterdam. The nearby Brussels region is home to many of the world's most dynamic companies in addition to many governmental and international organisations. Thousands of students in Leuven look for internships and jobs in Belgium's intellectual economy that includes some of the most innovative companies in Europe, many of them spin-offs from KU Leuven itself.

Chat with our student ambassadors

Ever wonder what the real KU Leuven student experience is like? Ask those who know! Our student ambassadors are current KU Leuven students who are happy to share their personal experiences studying at our University. There are ambassadors from all over the world, making it likely that you can find one from your own country and culture. Whatever your situation, you can use our handy ambassador webpage to find a student whose experiences might match your own.

www.kuleuven.be/studentambassadors

Your home away from home

There are many ways for us to help you feel at home:

- We offer an **online community** that allows you to connect with future fellow students before arriving in Belgium. Come here to get to know others, find out more information about the University and get excited about what's to come!
- The **Buddy Programme** gets you connected with a student who knows the University and the town well. A buddy is a local student volunteer with whom you can share your international experience during your time in Leuven (and long after). They can help you from the start with practical matters and introduce you to student life in Belgium.
- Every year, the KU Leuven **Welcome Desk** at Brussels Airport offers a friendly face to arriving international students. The desk is set up two weeks before the start of the academic year in September and is open from early morning until late evening. Staff members and volunteers help incoming students get to campuses, make sure they know their way around and assist them with any other urgent questions.
- The **Orientation Days and Freshers' Days** help you get settled in and invite you to learn more about the University and the city. Activities include tips and tricks on studying and living in Belgium, guided city tours, cultural visits and lots of other opportunities to meet fellow students. You will also learn more about the structure and content of your study programme, how to use online tools to plan your lessons and exams, etc.



Bachelor of Philosophy

It's a big world out there, and we are all just trying to make sense of it. Philosophy is the tool that the greatest minds in history have used to shed a little light on human existence. From ancient times to modernity, come face-to-face with the movements and ideas that have changed how we see the world, and our place in it.

KU Leuven. Inspiring the outstanding.

KU LEUVEN



Graphic design: Altera | Printing: Van der Poorten | Photos: KU Leuven - Rob Stevens

Updated as of October 2024 | ©2024 KU Leuven: FInstitute of Philosophy -
KU Leuven Marketing and Communications Office

The information in this brochure does not constitute a legally binding offer by the University.
The most recent information can be found at www.kuleuven.be/programmes