



THE UNIVERSITY
of ADELAIDE

2025

Student accommodation guide

Enhancing the education experience / 2

The University of Adelaide Village / 4

Roseworthy Residential College / 12

Mattanya student residences / 16

Preferred partner providers / 18

Scape at University of Adelaide

Scape Adelaide Central

Scape Waymouth

Yugo Adelaide City

Affiliated residential colleges / 20

Private rental accommodation / 22

Accommodation advice for international students / 24

Adelaide CBD locations / 26





Welcome.

At the University of Adelaide, we understand accommodation's importance in supporting your academic success.

The University offers an impressive portfolio of University-managed, and preferred-partner-managed student accommodation options to ensure a smooth transition into university life.

The University's student accommodation provision spreads across Adelaide's central business district or inner city suburbs offering students the opportunity to enjoy the convenience of vibrant city living close to our main campus.

Choosing student accommodation, particularly in the first year of your degree, will ensure a smooth transition into university life and help you to develop the skills and confidence to thrive in private rental accommodation in the future.

Student accommodation typically features:

- fully-furnished accommodation, removing the need to buy and sell your own furniture (and some appliances)
- fees that include both rent and utilities (electricity, gas, water, internet connection and use), making budgeting easy
- student residential communities enabling you to make friends faster and build your own support network
- a simple application and acceptance process.

The University's preferred-partner-managed student accommodation providers are committed to meeting minimum student service and support expectations set by the University to ensure our partners deliver an accommodation experience to our students that is aligned with that delivered within University managed properties.

Enhancing the education experience

Our University of Adelaide Accommodation Service will help you find the living arrangements that best suit your personal needs.

Perhaps you'll do best with a private room in student accommodation? Or maybe you'd prefer a room in a private share house? Whatever your requirements, our Accommodation Service will help you find an environment in which you can thrive—with minimal distraction, excellent study spaces and resources, and conducive to a balanced lifestyle .

Consider central city living

If your degree will be based at our North Terrace campus (including the Adelaide Health and Medical Sciences buildings) or Waite campus, we encourage you to consider the value of being located in Adelaide's central business district (CBD).

In addition to enjoying a vibrant cosmopolitan lifestyle, your close access to the city's free tram and bus network will help you save significant time and money

Central city living also puts you on the doorstep of Adelaide's premier shopping, dining and recreational precincts. These include the Rundle Mall and Rundle Street retail strips, Gouger Street cafés and restaurants, the Leigh and Peel Street bars, Chinatown and Adelaide's iconic Central Market.

Student accommodation

Student accommodation is accommodation for the exclusive use of students and suits new students to the University, without a local support network, who are looking for the convenience and comfort of packaged accommodation in a student residential environment.

The University offers an impressive portfolio of university-managed, preferred partner-managed properties and access to affiliated residential colleges within its student accommodation provision.

Students are encouraged to consider an accommodation place within the

University student accommodation provision in their first year to support their transition into university life.

Options include:

- University-managed
- Preferred partner-managed
- Affiliated residential colleges

The University of Adelaide student accommodation portal provides an easy platform through which students can submit an online application for an accommodation place within a University managed or preferred partner-managed property.

Submitting an online application for an accommodation place through the University of Adelaide student accommodation portal will ensure the Accommodation Service can monitor the progress of every application from submission to the confirmation of a place.

More information

For more information on the University managed student accommodation provision visit adelaide.edu.au/accommodation



National Property Accreditation Scheme (NPAS)



The National Property Accreditation Scheme (NPAS) aims to clearly distinguish accommodation provided for the exclusive use of students in Australia from other accommodation options.

NPAS offers a stamp of quality which is identifiable to universities, TAFE, English Language Colleges, government agencies, international education providers and students, to help students make an informed accommodation choice.

An NPAS branded property will consistently deliver on the expectations set by the minimum standard framework with respect to amenity, facility, security, customer service and management processes.

If you are unable to find what you are looking for within the University of Adelaide student accommodation provision, we encourage our students to consider an NPAS accredited student accommodation option as an alternative, as these properties have been assessed by the Student Accommodation Association (SAA) to have met a minimum set of industry standards.

For more information on NPAS accredited properties in Adelaide visit adelaide.edu.au/accommodation/npas-accreditedstudent-accommodation

Accommodation Service

The University of Adelaide provides students and their families, our network of valued school counsellors and international education agents access to a dedicated Accommodation Service.

Our professional team of accommodation specialists are available to assist our university community to provide general accommodation information, tenancy support and to apply for an accommodation place in student accommodation.

Book an online appointment with a specialist accommodation officer or meet one in person at the Accommodation Service on North Terrace campus.

Our specialist accommodation support includes:

- Access to the University of Adelaide student accommodation provision
- Access to NPAS accredited student accommodation and other student accommodation options

- Access to the rental database (students and providers) for private and shared rental accommodation
- Referral to temporary accommodation options.

Contact details

Accommodation Service

Level 3, Hub Central, North Terrace

Operating hours Monday–Friday, 9am–5pm

Phone +61 8 8313 5220 (24hrs/7days)

Email accommodation@adelaide.edu.au

Website adelaide.edu.au/accommodation





The University of Adelaide Village

Managed by the University of Adelaide for the exclusive use of our students, The Village is situated conveniently in Adelaide's dynamic CBD.

The Village offers you a vibrant, secure and well-balanced lifestyle—helping to make your study with us the time of your life and providing the perfect platform for academic success. Make no mistake, how you live affects how you study. At The Village, you'll live to succeed.

Adelaide is one of Australia's most cosmopolitan cities, with a vast array of cafés, restaurants and shops reflecting the diversity of its ethnic communities—and staying at The Village places you right in the centre of it.

Just a short 5-minute walk away is Adelaide's popular Central Market, where you can buy a huge range of fresh and healthy market produce, including fruit, vegetables, meat and seafood. Located right next-door to Central Market is Chinatown, where you can access an abundance of food options, mostly of Asian persuasion, from a variety of food courts, specialist supermarkets and affordable restaurants.

This precinct's close proximity gives you the choice of buying ingredients to prepare your own meals, which you can share with a friend or your entire household. Alternatively, during exam periods or when assignments are due, it gives you an abundance of quick and delicious eat-in options. Directly behind Chinatown, and still only minutes from The Village, is the Gouger Street café strip, where you can enjoy warm summer nights and cosy winter evenings in the company of good friends and housemates over coffee or a pot of tea.

Just 600 metres from The Village is the Adelaide Central Bus Station where buses and coaches servicing regional areas and interstate destinations arrive and depart, seven days a week, making travelling home on weekends and for holidays for students from regional areas easy.







All the comforts of home

The Village offers a superior living experience to other contemporary student accommodation options.

You can also select between having your own private bathroom, or—the more affordable option—sharing one with another student of the same gender. The spacious common kitchens come complete with a large fridge, electric cooktop, oven and kettle. And an on-site laundromat offers secure access to commercial-capacity washing machines and dryers operated by smart card technology.

Convenient transport

The Village offers the convenience of a free door-to-door shuttle service for residents, making it easy for you to get to lectures. The shuttle operates nine times a day, Monday to Friday, and connects residents to the University's main campus and the Adelaide Health and Medical Sciences building, all on North Terrace. Seats are limited and must be booked in advance.

Village residents also have access to a free city connector bus and inter-campus bus service, which operates from North Terrace campus and will return residents to The Village after hours.



Indicative shuttle service timetable

The Village	07:00	07:30	08:00	08:30	09:00	09:30	10:00	10:30	11:00
Royal Adelaide Hospital	07:07	07:37	08:07	08:37	09:07	09:37	10:07	10:37	11:07
AHMS building	07:09	07:39	08:09	08:39	09:09	09:39	10:09	10:39	11:09
North Terrace campus	07:15	07:45	08:15	08:45	09:15	09:45	10:15	10:45	11:15
Chinatown							10:23	10:53	11:23
The Village	07:30	08:00	08:30	09:00	09:30	10:00	10:30	11:00	11:30

** This service is subject to change with notice.*

Superior study resources

At The Village you'll also benefit from being extremely well supported to complete your assignments and prepare for exams. You'll have access to:

- free, unlimited Wi-Fi throughout the building
- a fully-equipped computer room with wireless printer
- dedicated study rooms that you can book, free of charge, for quiet personal use or group work.



Well-resourced recreation room

The Village's spacious recreation room provides the perfect location to meet fellow students and develop cross-border friendships that could well last a lifetime. It includes:

- home entertainment theatre
- reading corner
- access to free-to-air and satellite television
- PlayStation and Wii games compound
- pool table
- table-tennis table.





Valuable student engagement program

As a Village resident, you'll have the opportunity to participate in regular sporting and social activities through the facility's comprehensive student engagement program.



High-level security

Independent living at The Village is highly secure. A sophisticated access control system offers peace of mind by ensuring that only registered residents can gain entry.



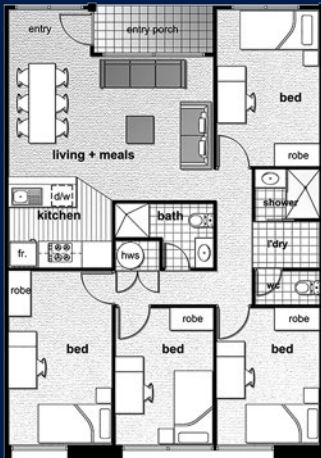
Outstanding value for money

The Village offers the exceptional value of an accommodation fee that includes access to a fully-furnished dwelling; unlimited wireless Internet connection; and all utilities—water, gas and electricity.

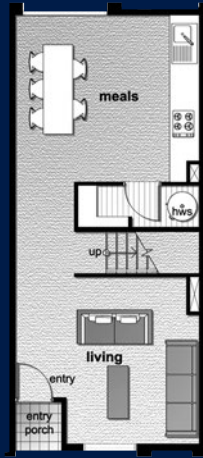


The Village floorplans

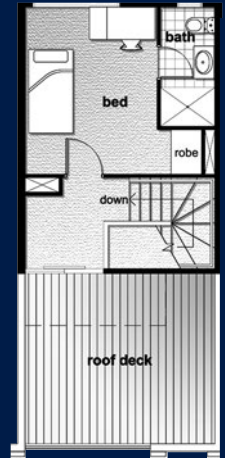
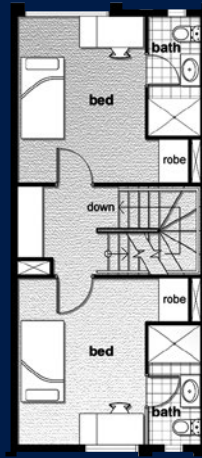
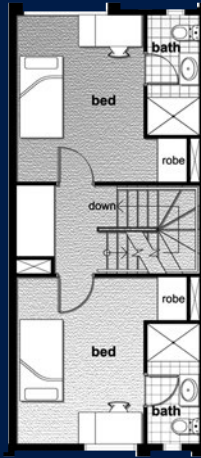
Students can choose to live in a townhouse or apartment at The Village (diagrams are indicative only—floor plans differ between townhouses/apartments throughout the facility).



Apartment Living
Example of a four-bedroom apartment



Townhouse Living
Example of a five-bedroom townhouse



Accommodation fees

Townhouse:

Private bathroom	A\$20,540
Share bathroom*	A\$18,980

Apartment:

Share bathroom*	A\$18,980
Refundable security deposit	A\$500

* Share bathrooms are shared between two occupants of the same gender.

For more information about The Village

Visit adelaide.edu.au/accommodation/university-managed-student-accommodation/the-university-of-adelaide-village

To apply

Visit adelaide.edu.au/accommodation and register on the Accommodation portal. You can then submit your application for The Village via the portal.

Roseworthy Residential College

Managed by the University of Adelaide, Roseworthy Residential College offers our Roseworthy-campus students the opportunity to enjoy all the benefits of relaxed, high-quality and well-equipped accommodation, right where they study.





Easy transport access

An on-campus transport service is available to take you to the nearby town of Gawler—just 10 minutes' drive away—where you can catch a 45-minute train ride straight into the Adelaide CBD.



Halls of residence and furnished houses

If you'll be studying at our Roseworthy campus, the Residential College will provide you with an outstanding foundation for academic success. Sharing the facilities with approximately 180 fellow students, you'll enjoy:

- your own private, fully-furnished bedroom
- air-conditioning
- free wireless Internet connection
- common bathrooms and kitchens
- quiet study rooms
- computer rooms with wireless printer
- TV rooms
- billiard room
- outdoor BBQ entertainment area.

You'll also have access to an on-site laundromat, and accommodation common areas will be regularly cleaned.



Quality on-campus facilities nearby

As the Residential College is located on the Roseworthy campus, you'll also be within easy walking distance of its:

- outstanding student library
- vibrant student social and study hub
- quality floodlit sporting facilities, including a 25m swimming pool
- large, fully-equipped gymnasium and exercise room
- cafe and shop



Extensive support and pastoral care

College staff take their pastoral care responsibilities very seriously. A comprehensive peer support program is provided for all residents, led by the Manager of the College and well-established senior students, ensuring your living environment is conducive to academic success, helps you feel welcome and settled, and enhances your overall wellbeing.



On-campus sports and recreation

You'll never be stuck for something to do while staying at Roseworthy Residential College. A wide range of activities are available for students and residents all year 'round, including:

- tennis
- basketball
- netball
- soccer
- social events
- animal student interest groups.



Accommodation fees

Accommodation (39 weeks)	A\$8,400
College social fee	A\$110
Refundable security deposit	A\$500

The accommodation fee includes provision for weekday evening meals (Monday to Friday only, excluding public holidays) throughout the 39-week term.

For more information

Visit adelaide.edu.au/accommodation/university-managed-student-accommodation/roseworthy-residential-college

To apply

Visit adelaide.edu.au/accommodation and register on the Accommodation portal. You can then submit your application for the Roseworthy Residential College via the portal.

Mattanya student residences

Student accommodation managed by the University of Adelaide.

Mattanya is comprised of a group of four University owned residences situated in North Adelaide. A fifteen-minute walk to North Terrace campus and five minutes from the trendy Melbourne Street café and restaurant precinct, Mattanya offers comfortable, convenient and independent living in a quiet suburban location.

When you secure a place at Mattanya you will be allocated a room within a four or five bedroom residence, sharing a bathroom and the common living areas of the house with other University of Adelaide students.

Consider the exceptional value of an accommodation fee that includes access to a fully furnished dwelling, an unlimited wireless internet connection and all utilities (i.e. water, gas and electricity): with the flexibility of paying the accommodation fee over two instalments (April and September) directly to the University through the course of the year.

Accepting a place at Mattanya provides you with the following:

- fully equipped kitchen complete with refrigerator/ freezer, gas cook top, oven and microwave
- comfortable air-conditioned living areas with TV, dining table, chairs and lounges
- bedrooms that include a bed, desk, chair and wardrobe
- washing machine and dryer
- unlimited wireless internet connectivity
- access to a recreation room equipped with PlayStation and a TV with a Foxtel connection for the exclusive use of all Mattanya residents
- outdoor courtyard and BBQ unit
- free onsite car parking is available upon application and subject to availability.



Accommodation fees

Room option in a shared house:

Share bathroom	A\$15,340
Refundable security deposit	A\$500

The accommodation fee includes the cost of all utilities (including unlimited wireless internet, water, gas and electricity).

For more information

Visit adelaide.edu.au/accommodation/university-managed-student-accommodation/rosworthy-residential-college

To apply

Visit adelaide.edu.au/accommodation and register on the Accommodation portal. You can then submit your application for Mattanya student residences via the portal.





Preferred partner providers

Scape at University of Adelaide

Scape at University of Adelaide is a preferred partner-managed property.

If you're looking for somewhere that perfectly balances a fun-filled uni lifestyle with the ideal studying environment, then look no further than Scape.

With plenty of social spaces, a bustling monthly events calendar, plenty of people to chat with, and a welcoming community, Scape will give you everything you need to excel in your studies while ensuring that you'll have lots of fun along the way.

The building is located on North Terrace directly across from the University of Adelaide's main campus, so not only will you be conveniently living right next to the uni but you will be next to the heart of Adelaide and all that the city has to offer.

Why choose Scape?

Beyond its thriving social scene and its study-focused environment, Scape comes with several amenities and perks that'll make your stay as easy as possible while offering an unforgettable uni living experience. Scape residents will be able to enjoy amenities, features, and perks such as:

- An all-inclusive cost; everything from bills to utilities is all wrapped up into one convenient weekly rent rate
- A large range of fully furnished shared apartments, twin rooms, and studios with air conditioning
- Unlimited Wi-Fi throughout the building
- Plenty of quiet study spaces and a top-notch computer hub
- Free residents' support and engagement program
- 24/7 support from the Scape team upon arrival
- A property induction and 'Welcome' events
- A packed monthly events program
- Stunning social spaces such as a games room, cinema, rooftop terrace (with BBQs), and pool table
- A fully equipped gym
- Secure bike storage



- A fully equipped gym
- Modern, card-operated laundry
- Outstanding security, with a dedicated team on-site 24/7, swipe-card access for all rooms, and CCTV.

For more information

Visit adelaide.edu.au/accommodation/scape-student-living/scape-at-university-of-adelaide

To apply

Visit adelaide.edu.au/accommodation and register on the Accommodation portal. You can then submit your application for Scape at University of Adelaide via the portal.

Explore Scape's other properties - the ultimate student hubs you won't want to miss!

Scape at Adelaide Central

Scape Adelaide Central is a preferred partner-managed property.

Scape Adelaide Central offers an unbeatable student living experience on Bank Street, right in the heart of Adelaide's cultural hub. This prime location not only saves students valuable travel time but also puts them at the centre of the action.

With easy access to the Adelaide train station and tram stop, commuting is a breeze. Imagine strolling just a few

minutes to the University of Adelaide, fostering a perfect balance between academics and city life. And when the need for retail therapy arises, Rundle Mall is just a delightful 5-minute walk away.

Living at Scape Adelaide Central isn't just convenient; it's a vibrant, exciting lifestyle where the city's pulse is right at your doorstep. Embrace the fun and energy of student life while enjoying the comfort of a well-connected, central accommodation.

For more information

Visit adelaide.edu.au/accommodation/scape-student-living/scape-adelaide-central

To apply

Visit adelaide.edu.au/accommodation and register on the Accommodation portal. You can then submit your application for Scape Adelaide Central via the portal.

Scape Waymouth

Scape Waymouth is a preferred partner-managed property.

Strategically located, this student haven is close to the University of Adelaide, ensuring you're at the heart of academic brilliance. But it doesn't stop there—immerse yourself in Adelaide's premier entertainment precinct, explore trendy

shops, and dive into an array of fantastic cafes and restaurants for that much-needed relaxation.

With a bus stop 5 minutes away and the University of Adelaide a 25 minute walk, convenience is key to elevate student experience at Scape Waymouth.

For more information

Visit adelaide.edu.au/accommodation/scape-student-living/scape-waymouth

To apply

Visit adelaide.edu.au/accommodation and register on the Accommodation portal. You can then submit your application for Scape Waymouth via the portal.

Yugo Adelaide City

Yugo Adelaide City is a preferred partner-managed property.

As part of Yugo, the first global student housing brand and operator created to enhance students' overall experiences, Yugo Adelaide City stands as one of the tallest buildings in the heart of Adelaide City. At over 118 meters high, it is ideally situated close to the University of Adelaide, Rundle Mall, and public transport.

Our student accommodation offers unrivalled views of beautiful Adelaide from the North, East, and West. With our 725-bed property, we provide a variety of fully

furnished room types, from single ensuite rooms to studios and shared apartments. Our all-inclusive rent covers utilities, making budgeting simple and ensuring you'll find the perfect fit.

Our residence features extensive shared spaces, including a spacious gym equipped with the latest equipment, a media room, a cinema room, a BBQ terrace, ample study areas, onsite laundry facilities, and much more.

Through our Live Your Best Life program, we empower young people beyond the classroom with collaborative events and projects,

preparing them for their careers. We offer a truly differentiated living experience that is environmentally and socially conscious, emotionally supportive, and safe.

For more information

Visit adelaide.edu.au/accommodation/yugo-adelaide-city

To apply

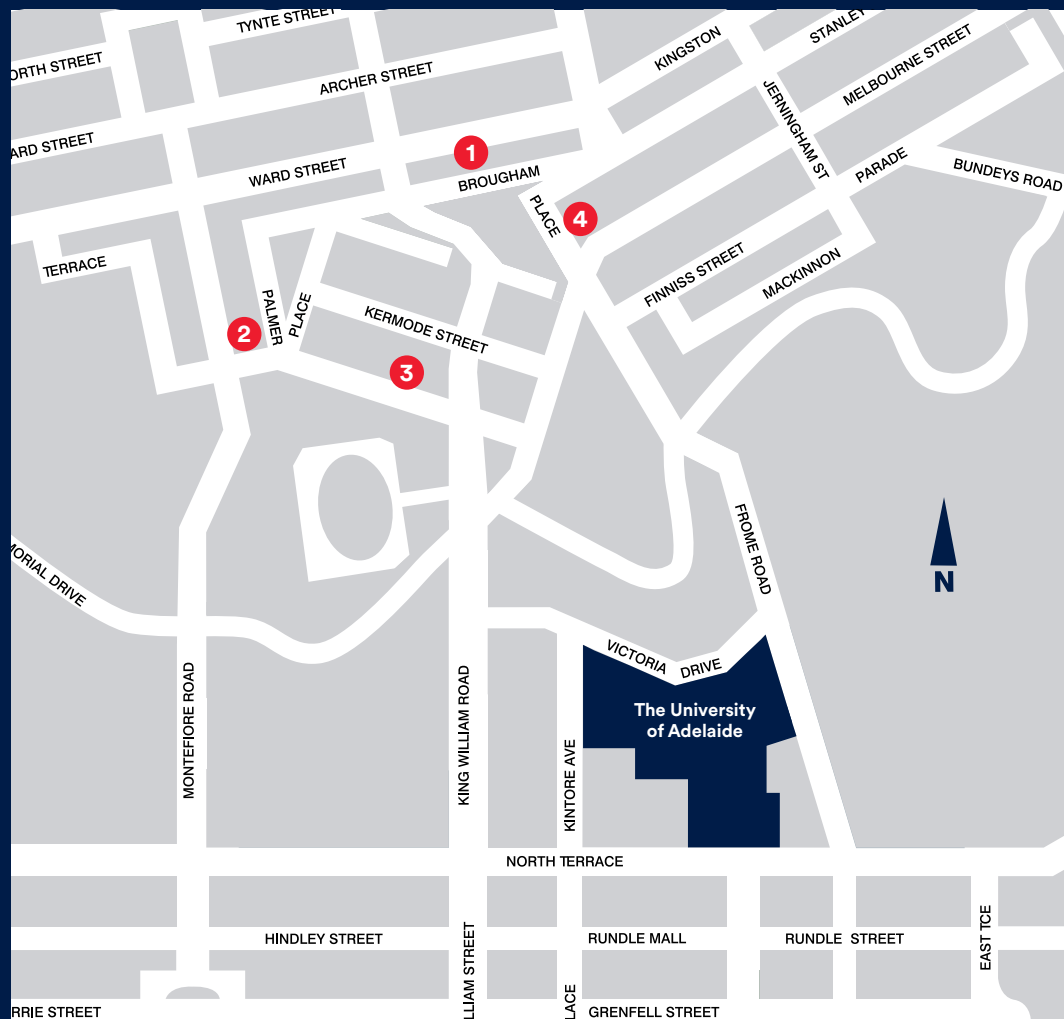
Visit adelaide.edu.au/accommodation and register on the Accommodation portal. You can then submit your application for Yugo Adelaide City via the portal.

Affiliated residential colleges

Affiliated residential colleges

The University's four affiliated residential colleges are vibrant places to live while studying, offering so much more than accommodation.

Students living at Aquinas, Lincoln, St Ann's, and St Mark's benefit from safe, welcoming, and supportive academic communities, fun extra-curricular activities, and plenty of opportunities to make friends. To learn more about the colleges, visit their websites or contact them directly.





1 Lincoln College



3 St Mark's College



2 Aquinas College



4 St Ann's College



Lincoln College
45 Brougham Place, North Adelaide
+61 8 8290 6000
lincoln.edu.au

Aquinas College
1 Palmer Place, North Adelaide
+61 8 8334 5000
aquinas.edu.au



St Ann's College
187 Brougham Place, North Adelaide
+61 8 8267 1478
stannscollge.edu.au

St Mark's College
46 Pennington Terrace, Adelaide
+61 8 8334 5600
stmarkscollge.com.au

Private rental accommodation

(including share accommodation)

We encourage you to consider a student accommodation option in your first year of study prior to seeking private rental accommodation.

This will give you time to settle into your academic routine, get used to our public transport network, identify your ideal location and amenities, and find a landlord committed to your safety and wellbeing.

Know what you're getting

Although you may have easy access to a wide range of online platforms through which you can arrange private rental accommodation in advance, you should be aware that most of these sites are unregulated.

This means they are being provided outside the local government framework put in place to protect both your interests (as tenant) and the landlord's. If you are looking to find private rental accommodation, including share accommodation, we encourage you to:

- book temporary accommodation for your arrival in Adelaide and give yourself plenty of time to inspect rental properties before making a selection. Visit our website for temporary accommodation options.

- access the rental database to view options from providers associated with our university community: adelaide.edu.au/accommodation
- avoid a commitment to a share or private rental accommodation option unless it's underpinned by a written agreement and you will receive a receipt for all payments, including security bonds.

Remember, the University of Adelaide Accommodation Service is available to help you make a well-informed decision about accommodation prior to arriving in Adelaide.



Rental accommodation checklist

To book an online consultation session with an accommodation specialist through our Accommodation Service visit adelaide.edu.au/accommodation

- Consider a student accommodation option for your first year of your degree.
- Research rental accommodation availability via the Rental Database.
- Establish your rental accommodation budget including rent, utilities, and transport.
- Arrange temporary accommodation for your arrival in Adelaide.
- Arrive in Adelaide and begin your search for rental accommodation. Allow a minimum of twenty eight days to achieve this objective.
- Visit the Accommodation Service on North Terrace campus for helpful hints and the latest market updates.
- Inspect a minimum of three properties before deciding on a rental accommodation option. Avoid making a financial commitment to share or rental accommodation without viewing the room/property first.
- Secure rental accommodation with a contract and receipts for all payments.
No contract = No rules or rights

Accommodation advice for international students



Securing long-term accommodation before arrival will enable the smoothest transition into your vibrant new city and university life.

Searching for permanent housing in a new country can be difficult, distracting and at times overwhelming. But securing student accommodation in advance avoids all that. It's easily done from wherever you call home; and our dedicated Accommodation Service team is ready to help in any way you need.

Arriving in Adelaide

You can book our airport pick-up service to transport you from Adelaide airport to your nominated accommodation destination for a service fee. You can arrange it through our Accommodation Service as soon as you've confirmed your flight arrival information and accommodation destination, and the service fee must be paid at the time of booking.

But rest assured, if you make your own way from the airport, that's easy too. It's only a 20-minute taxi ride into the CBD, and taxis are readily available at the designated taxi rank—located to your left as you exit the main terminal.

For more information visit adelaide.edu.au/accommodation/arriving-in-adelaide



Welfare monitoring

International students who are offered (and eligible for) direct entry into a University of Adelaide undergraduate program while still under 18 years of age may need to enter into an Approved Accommodation and Welfare Monitoring Agreement which will be included with your academic offer from the University.

If this is the case for you, you'll be required to live in University-approved accommodation so that we can ensure you receive the extra care and attention you need. Under this agreement you'll be offered the option of living at Scape at University of Adelaide (with no meal provision) or with a homestay provider (with a meal provision).

Study Abroad and exchange students

If you're a Study Abroad or Exchange student, please contact our Accommodation Service for more information about an accommodation option that best suits your personal circumstances.

Students with an accompanying partner or family

Students with an accompanying partner or family are best advised to secure private rental accommodation to achieve a stable platform from which the family can settle comfortably into local life.

The best approach is to work with the Accommodation Service to access the rental market via the Rental Database. Students can access the database via the Accommodation Service website. The share and rental property listings on this database come from members of the University community.

The best process to follow is to:

- Conduct some research via the Accommodation Service website

(Rental Database) before leaving their country.

- Engage with the Accommodation Service through an online consultation session with a specialist accommodation officer prior to leaving their country.
- Book temporary accommodation for arrival in Adelaide (three weeks minimum and longer if accompanied by a partner and or children).
- Visit the Accommodation Service on arrival in Adelaide for up-to-date advice and support as you begin the process of actively seeking to secure a long-term private rental accommodation option.
- Avoid being distracted from the task of securing a long-term private rental option by other business during your time in temporary accommodation.

Adelaide CBD locations



The University of Adelaide



AHMS building



The Village



Chinatown



Gouger St



Central Market



Scape at University of Adelaide



Central Bus Station









Further enquiries

Accommodation Service
Level 3, Hub Central, North Terrace
University of Adelaide, SA 5005 Australia

enquiries accommodation@adelaide.edu.au

phone +61 8 8313 5220

free-call 1800 061 459

web adelaide.edu.au/accommodation

facebook facebook.com/AU.Accommodation

X (twitter) twitter.com/uniofadelaid

instagram instagram.com/uniofadelaid

wechat UniversityOfAdelaide

weibo weibo.com/uniadelaide

Disclaimer The information in this publication is current as at the date of printing and is subject to change. You can find updated information on our website at adelaide.edu.au. The University of Adelaide assumes no responsibility for the accuracy of information provided by third parties.

© The University of Adelaide
Published July 2024. Job no. 7469

Australian University Provider Number PRV12105
CRICOS Provider Number 00123M

Kurna acknowledgement

We acknowledge and pay our respects to the Kurna people, the original custodians of the Adelaide Plains and the land on which the University of Adelaide's campuses at North Terrace, Waite, and Roseworthy are built. We acknowledge the deep feelings of attachment and relationship of the Kurna people to country and we respect and value their past, present and ongoing connection to the land and cultural beliefs. The University continues to develop respectful and reciprocal relationships with all Indigenous peoples in Australia, and with other Indigenous peoples throughout the world.