



1398

2025

# SINCE 1398

The Proud Successor of  
the 600-year Heritage of Sungkyunkwan,  
The only National Institute of Higher Learning  
in the Joseon Dynasty,



# BEYOND 2025

We Nurture Human Talent  
for the World.





“Is it not a pleasure, having learned something,  
to try it out at due intervals?”

(opening line of The Analects of Confucius)

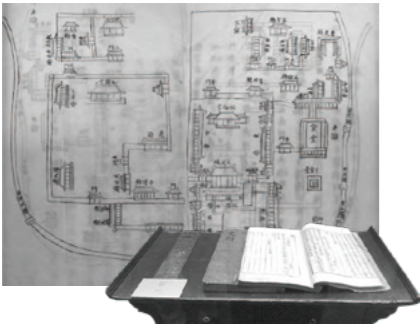


“The way of great learning consists  
in manifesting one’s bright virtue.”

(opening line of The Book of Rites)

# Our Footsteps Chart the History of National Education

627 Years of SKKU



**1398**  
The foundation of the first national education institute in Korea : Taejo (1335-1408), the founder of the Joseon Dynasty initiates a tradition for royal princes to enter **Sungkyunkwan**

**1895**  
Reformed as a modern three-year university, introducing the Department of Confucian Studies



**1910**  
The University is renamed Kyonghagwon by the Japanese



**1945**  
Reopened as Myeongnyun College after national liberation, restoring the name Sungkyunkwan



**1946**  
Sungkyunkwan University Foundation established and elevated to official college status: Independence activist Kim Chang Sook named first president, Cho Dong Sik as foundation chairman



1398 ————— 2025

**1965**  
Lee Byung Chul of Samsung Group appointed chairman, Samsung Foundation of Culture joins university management until 1977

**1978**  
The Natural Sciences Campus opens

**1996**  
Samsung Foundation re-engages in university management

**1998**  
600th Anniversary Commemoration Ceremony



**2018**  
Ranked 82nd in Times Higher Education (THE)

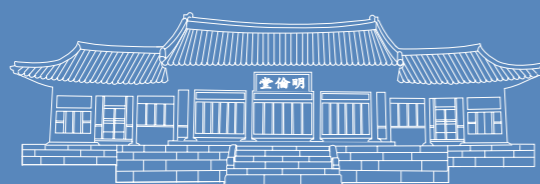
**2019**  
Selected as NO.1 private university in Joong-Ang Ilbo University Evaluation

**2020**  
Supercomputing Center established

**2021**  
Ranked in the top 50 globally by QS World University Rankings by Subject and No. 1 among private universities in Korea

**2023**  
President Yoo Ji Beom and Chairman Park Jae Wan appointed, Achieved No. 1 employment rate among comprehensive universities in Korea for eight consecutive years

**2024**  
VISION 2030+ Declaration: "A university creating future value through grand challenges."



## Educational Principles

仁義禮智 (pronounced in-eui-ye-ji) means benevolence, righteousness, propriety, and wisdom, which constitute the foundational spirit of Confucianism and the four virtues humans should attain. Sungkyunkwan University's educational objective is to instill these virtues in people's minds.



## Founding Philosophy

修己治人 (pronounced su-gi-chi-in) means to cultivate oneself and govern the world. SKKU nurtures talented people who strive to develop their capacities, cooperate and coexist in society, and pave the future of the nation and humanity.

## SKKU's people are creative global leaders



“ Inspiring Future,  
Grand Challenge ”

### Sungkyunkwan University strives to be a university that embodies 'bold challenges' and 'future values.'

Based on our proud 627-year history and shining tradition, Sungkyunkwan University is renewing itself as a university that opens a new era. We have been leading the development of tertiary education through creative challenges, bold innovation, and the spirit of sharing and coexistence, and will grow into a global leading university that contributes to resolving the problems faced by the global community.

Under the slogan “Inspiring Future, Grand Challenge,” SKKU will continue to embrace bold challenges rooted in the SKKU spirit. With a fearless drive to pursue success, we will pursue a performance-based strategy that is well-aligned with our academic units. In addition, we will build an environment for world-class creative education so that we can foster global leaders of the future and fulfill our social responsibility in sustainable ways. SKKU is strengthening global management and industry-academia collaboration to develop advanced technologies and creative intellectual values that are ahead of our times. Through such efforts, we will provide an innovative education system that enables students to pursue their dreams and passions, and we will contribute to future society through research and collaboration. Sungkyunkwan University is dedicated to becoming a globally respected institution, creating future values, and leading itself as Korea's premier Global Leading University.

President of Sungkyunkwan University

유지범



# VISION 2030+



## Student Success Education

### Objective

Raising Global Leaders Who Lead the Transformation of Future Society through the Realization of Self-fulfillment

### Platform

Self-directed  
Global Learning  
Experience

### Strategy

- Student-choice-centered Education System
- Student Experience-based Learning System
- Hyper-personalized Student Support System
- SKKU Education with a Global Horizon



## Value Creation Research

### Objective

Implementation of a University Focused on Sustainable Growth/Value Creation Research

### Platform

High Impact  
Convergence  
Research

### Strategy

- Fostering Respected & Leading Scholars
- Humanities/Natural Sciences Convergence Research Cluster
- A Sustainable Innovation Research Value Chain
- Developing a Super-Gap Global Research Hub



## Co-prospering Partnership

### Objective

Acknowledging Sustainable (ESG) Social Responsibility as a Global University

### Platform

Profit-generating  
Technology

### Strategy

- Commercialization/Entrepreneurship System
- Community Collaboration Clusters
- A Campus Full of 'SKKU spirit'
- SKKU Governance 3.0

Inspiring  
Future,  
  
Grand  
Challenge



# SKKU

by the Numbers

THE World University Rankings

 102<sup>nd</sup>

QS World University Rankings

 123<sup>rd</sup>

THE World University Rankings

No. 1 private university in Korea  
(102<sup>nd</sup> in the world)

Financial Times MBA Ranking

No. 1 in Korea  
for 13 consecutive years

ARWU (Shanghai Rankings)

No. 1 private university in Korea

HCR Researchers

No. 1 private university in Korea  
(10 people)

Undergraduate / Graduate students

28,256

Faculty

1,529

Employment rate

76.5 %

Global network (68 countries)

549 universities

Scholarship amount per person (undergraduate)

3,377,956 won

Scholarship amount per person (general graduate)

9,948,230 won

st

# SKKU's Education

Self-direction  
Convergence  
Globality  
Creativity

SKKU education respects tradition and faces up to future challenges. Through our education innovation strategy BIGs\*, we nurture creative individuals who will lead us into the new era.

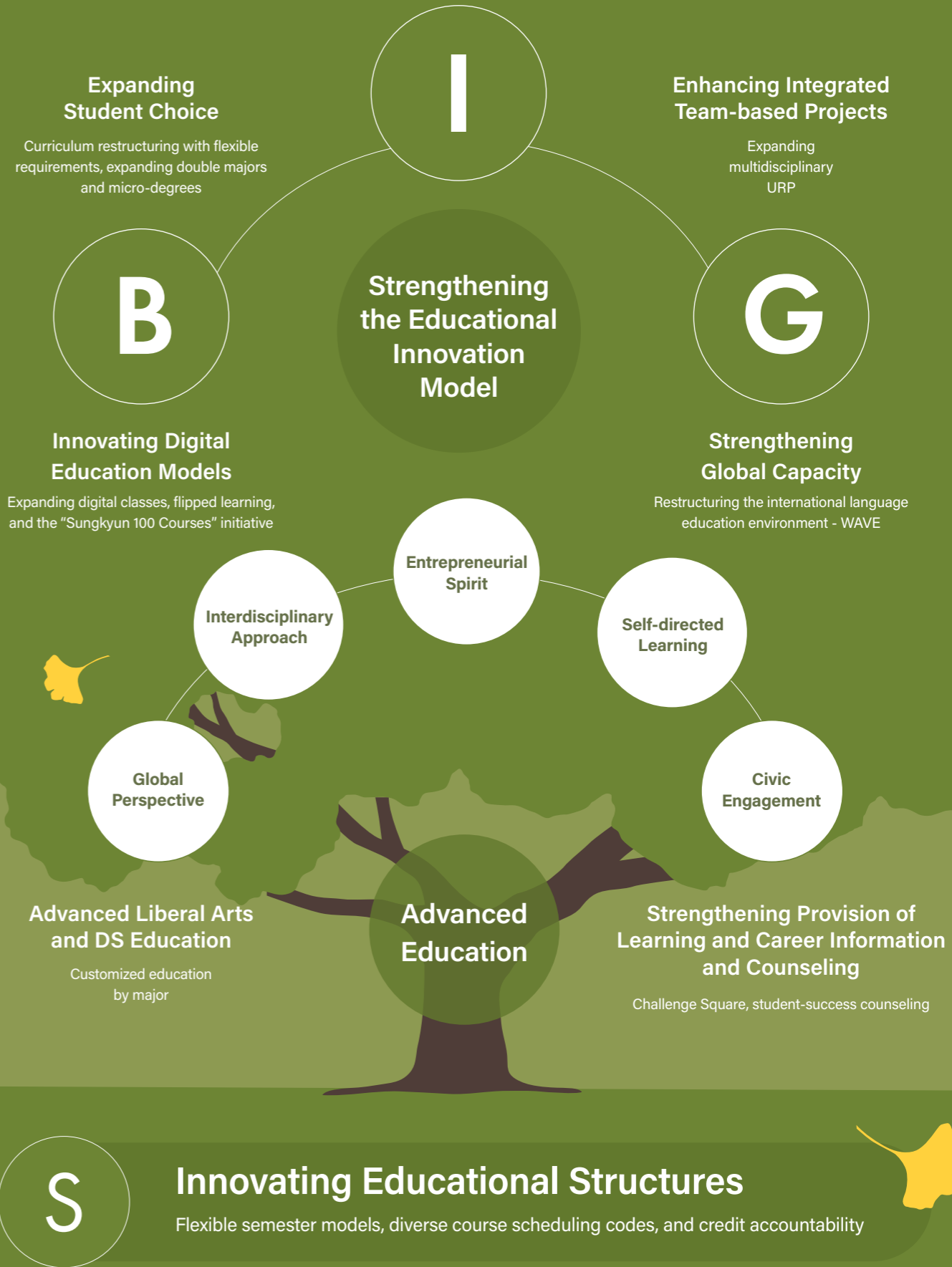
\*SKKU's unique education innovation strategy BIGs stands for Beyond the campus (innovating digital education models), Inquiry, Global, and support system.





# SKKU Education Innovation Strategy BIGs

BIGs: Expanding Learning Experiences Beyond Borders



# SKKU's Research

“The Most Influential Researchers  
in the World (HCR)” university in Korea  
with the most Highly Cited Researchers  
Top research infrastructure  
Partnerships with the world-class Samsung

Thanks to its world-class research capacity and  
environment, SKKU boasts research power that  
enables the creation of future values for humanity.



Professor Ahn, Myung Ju  
Department of Hematology and Oncology,  
Samsung Medical Center

Professor Muhammad Khan  
College of Computing and Informatics

Professor Park, Nam Gyu  
School of Chemical Engineering

Professor Lee, Jin Wook  
SKKU Advanced  
Institute of Nanotechnology



Professor Lim, Ho Yeong  
Department of Hematology and Oncology,  
Samsung Medical Center

Professor Lee, Young Hee  
Center for Integrated  
Nanostructure Physics

Distinguished Professor  
Park, Keunchil  
Samsung Medical Center

Professor Lee, Je Chan  
School of Civil,  
Architectural Engineering  
& Landscape Architecture

## Home to 2 Government-led Future Nobel Prize Research Teams

Participation in research led by the Institute for Basic Science (IBS), the only basic science research center in Korea conducting world-class research The Center for Neuroscience Imaging Research led by Professors Seonggi Kim and Hak-Wan Lau, and the Center for 2D Quantum Heterostructures led by Professor Hyeon Suk Shin, spearheading core basic science research in foundational technologies with the aim of achieving top-class research results with over 180 billion KRW in research grants since 2012.



Research funding of  
**371** million KRW  
per professor



**6,832**  
internationally  
recognized articles



**15%** of published papers  
rank in the world's  
**Top 10%**

## Major Research Institutions

- Center for Neuroscience Imaging Research
- Center for 2D Quantum Heterostructures
- SKKU Advanced Institute of Nanotechnology
- Biomedical Institute for Convergence at SKKU
- Sungkyun AI Research Institute
- Institute of Quantum Biophysics
- SKKU Convergence Institute for Culture, Arts, and Media
- SKKU Institute of Energy Science & Technology
- Institute for Future Policy Studies(SKK IFPS)

## Affiliated Research Institutes

### 55 Institutes in Humanities and Social Sciences Campus

- Institute of Confucian Art & Cultural Contents
- Institute for Eastern philosophy & culture
- Center for East Asian History
- Science & Technology Law Institute
- Korea-China Digital Business Institute
- Institute of Applied Psychology
- Sungkyun Eoconomic Research Institute
- Institute of Management Research
- Private Tutoring Innovation Education and Research Center
- Performance and Design Science Institute
- Institute of General Education

### 85 Institutes in Natural Sciences Campus

- Theranostic Macromolecules Research Center
- Institute of Basic Science
- Institute of Information and Communications Technology
- AI-Digital Health Care Research Center
- Convergence Research Institute
- Research Institute of Pharmaceutical Sciences
- Biocosmetics Research Center
- Research Institute for Physical Fitness and Sport Science
- Institute of Medical Research
- Center for Nanotubes and Nanostructured Composites
- Polymer Technology Institute
- Center for Advanced Plasma Surface Technology

# Research



# SKKU's Industry -Academia Collaboration

The best partnership based on the finest brains,  
top-notch infrastructure,  
and a business-minded innovation system

SKKU's industry-academia collaboration creates  
future value by producing tomorrow's talent  
and pioneering cutting-edge research.  
With our technological leadership and win-win strategy  
that transcends time and space,  
we have established the world's best platform  
for industry-academia-research collaboration.





Research grants reached  
**666.5** billion KRW  
in 2023



**68<sup>th</sup>**  
in the Times Higher Education Industry  
Income category in 2025

### Education System tailored to meet Industries' Needs

Collaboration with Samsung to train professionals through contracted departments on the campus and Samsung Institute of Technology in the company

- Contracted Departments : Semiconductor Systems Engineering(Samsung Electronics), Intelligent Software(Samsung Electronics), Material-Component Convergence Engineering(Samsung Electro-Mechanics), Battery Science and Engineering(Samsung SDI)

### Innovation and Convergent Education and Research Leading the Global AI Era

Leading the development of AI technology in the era of digital transition, and collaborating with industries to build human capacity for converging creativity and innovation

- Winner of the Korea AI Awards (2022), recognized by both the government and industry
- AI-related programs: 3 undergraduate and 8 graduate courses, along with multiple convergence tracks/micro-degrees/affiliated institutes

### Partnering with the World's Top Semi-conductor Companies to train Advanced Talent

- Samsung-linked semiconductor programs with job guarantees or collaborative projects: Departments in Semiconductor Systems Engineering, Semiconductor Convergence Engineering, Material-Component Convergence Engineering
- Numerous graduate courses including Semiconductor and Display Engineering producing elite master's and doctoral degree holders
- Only university in Korea to win all three state-funded semiconductor projects (securing 46 billion KRW over five years)
- Joint research and industry-academia partnerships with Lam Research (USA), Samsung Electronics (Korea), SK Hynix (Korea)

### Fostering Regional/Global Startup Ecosystems and Incubating Startups on Campus

- Over 100 faculty startups to date, 27 new faculty startups and 47 new student startups established
- Won 7 state-funded projects worth 10 billion KRW in total, including the Startup-Centered University Project, Campus Town Project, and Lab-Specialized Startup Lead University Project



R&D  
Partnership

# SKKU's Global

Representing Korea  
in connecting with the world's  
top universities  
Cultivating tomorrow's global leaders

---

SKKU leads global innovation through strategic partnerships with world-renowned universities and research institutions worldwide. We nurture creative global leaders through diverse programs including student exchanges, ISS, WISE, and Global Challenge Scholarships.





Partnerships

with **68** countries

**549** universities



**32**  
Dual degree programs

in **26** universities



**999**  
Inbound exchange  
students

**831**  
Outbound exchange  
students



**3,800**  
International  
students

**1,361**  
International summer  
/winter semester

#### Inbound Program: Experience SKKU!

An exchange student program for students from overseas partner universities, providing SKKU's differentiated educational curriculum and customized cultural exchange programs.

#### Outbound Program: Beyond SKKU!

An exchange program expanding global learning opportunities for SKKU students, enabling them to earn credits at partner universities overseas while interacting with diverse peers and broadening their global perspectives.

#### International Summer Semester (ISS)

A flagship short-term summer program that brings in world-renowned professors to teach a new global issue each year, offering top-tier educational experiences for students from international universities.

#### Winter International Student Experience (WISE)

A short-term winter vacation program that offers students the opportunity to thoroughly study Korean language, culture, and other subjects related to Korean studies, while also providing cultural events to fully experience Korea's charm during the winter season.

#### Sungkyun Hangeul Essay Contest

Established in 2007, this unique and prestigious contest fosters global communication through Hangeul, promoting its value while discovering future talent. It is the only Hangeul essay competition that attracts a large number of participants from all around the world annually.



# Humanities and Social Sciences Campus

The heart of Seoul, Gwanghwamun,  
The heart of youth, Daehak-ro,  
and home to SKKU's Humanities and Social Sciences Campus,  
where the shining eyes and ambitions  
of the students of the old Sungkyunkwan  
are treasured to this day blended with  
the scent of history and anticipation of the future.

- 600th Anniversary Hall
- Law Building
- Faculty Hall
- Hoam Hall
- Central Library
- Student Center
- International Hall
- International House
- Yanghyeongwan
- Toegye Hall of Humanities
- Dasan Hall of Economics
- Business Building
- Kingo Start-up Space
- Suseongwan




- Natural Sciences Building 1
- Natural Sciences Building 2
- Engineering Building 1
- Engineering Building 2
- General Studies Building
- Life Science and Technology Building
- Chemistry Building
- Semiconductor Building
- Pharmacy Building
- Medicine Building
- DRC Building
- Samsung Library
- Research Center 1
- Research Center 2
- Electron Microscope Building
- Research & Business Center
- N Center
- Utility Center
- Laboratory Building
- Student Center
- Shops & Services Center
- Suseongwan



# Natural Sciences Campus

Suwon, the center of Korea's semiconductor and knowledge-based industries, home to Samsung Electronics and Samsung SDI, and many other high-tech companies, and thus dubbed the Techno Valley of Asia. And at the core of youthful intellect and innovation, the Natural Sciences Campus of SKKU resides.





“SKKU students share the same  
compassionate outlook on  
society as the scholars of the old  
Sungkyunkwan of 600 years ago.”

**Choi, Tae Sung**  
(History major, Class of 1990)

“SKKU people will lead the change  
in the world with their hearts of gold.”

**Park, Nam Gyu**  
(Professor of Chemical Engineering)

“It was in Sungkyunkwan  
University that I first realized  
that what I create can be worth  
something in this world.”

**Seung, Young Wook**  
(Business Administration major, Class of 2005)

“SKKU will always have a  
special place in my heart.”

**Song, Jung Gi**  
(Business Administration major, Class of 2005)

SKKU alumni talk about  
**The SKKU Spirit**

# Colleges and Departments

College of Confucian Studies and Eastern Philosophy

- Undergraduate : Confucian and Oriental Studies
- Graduate : Confucian Studies, Eastern Philosophy and Korean Philosophy

College of Liberal Arts

- Undergraduate : Korean Language and Literature, English Language and Literature, French Language and Literature, Chinese Language and Literature, German Language and Literature, Russian Language and Literature, Korean Literature in Classical Chinese, History, Philosophy, Library and Information Science
- Graduate : Korean Language and Literature, English Language and Literature, French Language and Literature, Chinese Language and Literature, German Language and Literature, Russian Language and Literature, Korean Literature in Classical Chinese, History, Philosophy, Library and Information Science, Korean Language Education
- Interdisciplinary Majors : Cross-cultural Studies, Japanology, Studies of Glocal-Cultural Contents , Classics, Humanistic Future Studies, Interdisciplinary Linguistics
- Cooperative Programs : Comparative Culture
- Convergence Majors : Social Entrepreneurship and Humanistic Future Studies

Law School

- Graduate : Law, Forensic

College of Social Sciences

- Undergraduate : Public Administration, Political Science and Diplomacy, Media & Communication, Sociology, Social Welfare, Psychology, Consumer Science, Child Psychology and Education, Public Affairs
- Graduate : Political Science and Diplomacy, Media & Communication, Sociology, Social Welfare, Psychology, Consumer Science, Child Psychology and Education, Human Resource Development
- Interdisciplinary Majors : Public Interest and Law
- Convergence Majors : Convergence for Social Innovation
- Convergence Tracks : Population Change and Resilience Societies

College of Economics

- Undergraduate : Economics, Statistics, Global Economics
- Graduate : Economics, Statistics, Foreign Trade, Quantitative Applied Economics
- Interdisciplinary Majors : International Trade and Policy

SKK Business School

- Undergraduate : Business Administration, Global Business Administration
- Graduate : Business Administration
- Interdisciplinary Majors : Entrepreneurship & Innovation
- Convergence Majors : FinTech

College of Education

- Undergraduate : Education, Education in Classical Chinese, Mathematics Education, Computer Education
- Graduate : Education, Disciplinary Education, Computer Science Education

School of Art

- Undergraduate : Fine Art, Design, Dance, Film, Television and Multimedia, Theatre, Fashion Design
- Graduate : Fine Art, Design, Dance, Film, Television and Multimedia, Theatre, Fashion Design, Interdisciplinary Info Design, Game Design
- Cooperative Programs : Interdisciplinary Program in Studies of Art

College of Computing and Informatics

- Undergraduate : Data Science, Applied Artificial Intelligence, Culture and Technology, Self-designed Transdisciplinary Studies
- Graduate : Interaction Science, Applied Artificial Intelligence, Immersive Media Engineering, Applied Data Science
- Interdisciplinary Majors : Interdisciplinary Program of Convergent Software
- Convergence Majors : Human-Artificial Intelligence Interaction

Institute for Cross-disciplinary Studies

- Undergraduate : Artificial Intelligence for Operation
- Graduate : Future Policy Studies

Academy of East Asian Studies

- Graduate : East Asian Studies
- Interdisciplinary Majors : Interdisciplinary Program of Korean Studies
- Cooperative Programs : Translating Pre-modern Korean Text in Classical Chinese

Graduate Programs - Professional

- Graduate School of Business Administration
- Graduate School of Governance
- Graduate School of China
- Law School

Graduate Programs - Special

- Graduate School of Confucian Studies
- Graduate School of Education
- Graduate School of Strategic Studies
- Graduate School of Information and Communication
- Language and AI graduate school
- Graduate School of Social Welfare
- Graduate School of Business Administration(IMBA)
- Graduate School of Media and Culture

College of Science

- Undergraduate : Biological Sciences, Mathematics, Physics, Chemistry
- Graduate : Biological Sciences, Mathematics, Physics, Chemistry
- Cooperative Programs : Interdisciplinary Course of Physics and Chemistry

College of Information and Communication Engineering

- Undergraduate : Electronic and Electrical Engineering, Semiconductor Systems Engineering, Material-Component Convergence Engineering, Semiconductor Convergence Engineering
- Graduate : Electrical and Computer Engineering, Semiconductor and Display Engineering, Digital Media Communication, Semiconductor Convergence Engineering, Display Convergence Engineering, Advanced Display Engineering
- Interdisciplinary Majors : Advanced Semiconductor Engineering, Semiconductor Materials, Components, Equipment and Artificial Intelligence System
- Convergence Tracks : Material Component Equipment Packaging Convergence Track, Semiconductor Device Circuit Design and System Convergence Track, Advanced Semiconductor Convergence Track
- Cooperative Programs : Photovoltaic System Engineering

College of Computing and Informatics

- Undergraduate : Software, Intelligent Software
- Graduate : Software, Intelligent Software, Artificial Intelligence, AI Systems Engineering, Smart Factory Convergence
- Interdisciplinary Majors : Interdisciplinary Program of Convergent Software

College of Engineering

- Undergraduate : Chemical Engineering, Advanced Materials Science and Engineering, Mechanical Engineering, Civil, Architectural Engineering and Landscape Architecture, Systems Management Engineering, Nano Engineering, Architecture, Quantum Information Engineering
- Graduate : Chemical Engineering, Polymer Science and Engineering, Advanced Materials , Mechanical Engineering, Civil, Architectural and Environmental System Engineering , Architecture, Landscape Architecture, Industrial Engineering, Smart Power Engineering, High-Tech Soutution, Intelligent Robotics
- Convergence Tracks : Science and Technology Policy Talent Development Convergence Track
- Cooperative Programs : Interdisciplinary Program in Crisis, Disaster and Risk Management, Service Design Interdisciplinary Major
- Convergence Majors : Global Smart City, Smart Fab. Technology

School of Pharmacy

- Undergraduate : Pharmacy
- Graduate : Pharmacy, Industrial Pharmaceutical Science, Biohealth Regulatory Science
- Convergence Majors : Biopharmaceutical Convergence

School of Medicine

- Undergraduate : Medicine(Premedical Course), Medicine
- Graduate : Medicine

College of Biotechnology and Bioengineering

- Undergraduate : Food Science and Biotechnology, Bio-Mechatronic Engineering, Integrative Biotechnology
- Graduate : Food Science and Biotechnology, Bio-Mechatronic Engineering, Integrative Biotechnology
- Interdisciplinary Majors : Interdisciplinary Program of Comprehensive Bioinformatics and Omics
- Convergence Tracks : Core-Bio A-School Track
- Cooperative Programs : Interdisciplinary Program in Biocosmetics

College of Sport Science

- Undergraduate : Sport Science
- Graduate : Sport Science, Sport Interaction Science

Institute for Cross-disciplinary Studies

- Undergraduate : Biomedical Engineering, Energy, Industrial Artificial Intelligence, Battery Science and Engineering
- Graduate : Biomedical Engineering, Energy Science, Biophysics, Future Energy Engineering, MetaBioHealth
- Interdisciplinary Majors : Energy Science
- Convergence Majors : Intelligent Precision Healthcare Convergence
- Interdisciplinary Course of Material Science and Engineering

SKKU Advanced Institute of Nano Technology

- Graduate : Nano Science and Technology, Rechargeable Batteries for SKon

Samsung Advanced Institute for Health Sciences & Technology

- Graduate : Health Sciences and Technology, Medical Device Management and Research, Digital Health, Clinical Research Design and Evaluation, Advanced Regenerative Medicine

Graduate Programs - Professional

- Graduate School of Management of Technology
- Graduate School of Water Resources

Graduate Programs - Special

- Graduate School of Clinical Nursing Science
- Entrepreneurship

# On-campus Institutions

## Major Research Institutions

- Center for Neuroscience Imaging Research
- Center for 2D Quantum Heterostructures
- SKKU Advanced Institute of Nanotechnology
- Biomedical Institute for Convergence at SKKU
- Sungkyun AI Research Institute
- Institute of Quantum Biophysics
- SKKU Convergence Institute for Culture, Arts, and Media
- SKKU Institute of Energy Science & Technology
- Institute for Future Policy Studies(SKK IFPS)

## Major Administrative Institutions

- Student Success Center
- Knowledge Center for Innovative Higher Education
- Confucianism Humanity Education Center
- Center for Innovative Engineering Education
- Institution for Digital Education Advances



“Since ancient times,  
the talented people of our country  
have gathered at Sungkyunkwan,  
so it cannot be a coincidence  
that you, too, have come here.”



Grand challenge of talented youth,  
Charting the future of humanity  
With a proud heritage of 600 years  
In the name of Sungkyunkwan.





[www.skku.edu](http://www.skku.edu)

**Humanities and Social Sciences Campus** 25-2, Seonggyungwan-ro, Jongno-gu, Seoul, 03063, Rep. of KOREA

**Natural Sciences Campus** 2066, Seobu-ro, Jangan-gu, Suwon-si, Gyeonggi-do, 16419, Rep. of KOREA