



UNIVERSITY OF  
LIVERPOOL

**START YOUR  
ORIGIN STORY**

**UNDERGRADUATE  
PROSPECTUS 2026**



Teaching  
Excellence  
Framework

We are the original redbrick  
[liverpool.ac.uk](http://liverpool.ac.uk)

Our story began in 1881 when we became one of the first civic universities.

### The original redbrick.

Today, we're an internationally renowned, globally-connected Russell Group university, associated with nine Nobel Prize winners, and home to highly-respected research and lively, original thinking.

We offer a one-of-a-kind experience and opportunities for everyone. Whoever you are, wherever you're from and whatever you aspire to be – start your story with us.

### Start your origin story here.



**Watch now:**  
**Discover your superpower at the University of Liverpool.**



# WELCOME TO OUR UNDERGRADUATE PROSPECTUS FOR 2026 ENTRY



## Get to know us:

Go online [liverpool.ac.uk](https://liverpool.ac.uk)

## Sign up for updates and event notifications:

[liverpool.ac.uk/openday](https://liverpool.ac.uk/openday)

## Explore our virtual tour at:

[liverpool.ac.uk/virtual-tour](https://liverpool.ac.uk/virtual-tour)

## Deep dive into our subject pages:

[liverpool.ac.uk/study/subjects](https://liverpool.ac.uk/study/subjects)

## Chat with our students:

[liverpool.ac.uk/study/chat](https://liverpool.ac.uk/study/chat)

## Information for parents and supporters:

[liverpool.ac.uk/undergraduate/parents](https://liverpool.ac.uk/undergraduate/parents)

## Connect with:

#TeamLivUni on social

 @livuni

 /UniversityofLiverpool

 @liverpooluni.bsky.social

 LivUni

 @liverpooluni

## Open Days

For information about our open days and ways to visit us, see pages 68–69.

# CONTENTS

[Why Liverpool? 04](#)

[Meet our graduates 08](#)

[Careers and Employability 10](#)

[Liverpool: The student edit 12](#)

[Accommodation 22](#)

[Accessible to everyone 28](#)

[A global university 29](#)

[Supporting your learning 30](#)

[Your support network 32](#)

[Mental health and wellbeing 34](#)

[Plan your finances 36](#)

[Managing the cost of living 37](#)

[Global Opportunities 38](#)

[Liverpool Guild of Students 40](#)

[Sport Liverpool 42](#)

[A campus full of culture 44](#)

[Original thinking, real world impact 48](#)

[Undergraduate programmes 50](#)

[Full programme list 52](#)

[Your application 66](#)

[Connect with us 68](#)

[Index 70](#)



# WHY LIVERPOOL?

Original and inclusive for 140 years, we're a truly inspirational place to learn and research. We're also a place where students develop a rich world view, as well as the skills and confidence to thrive in today's connected world.

## A warm welcome

We believe education changes lives and take pride in welcoming students from all backgrounds. Our support goes beyond contextual offers and financial aid – it's in the friendliness of our campus and city – which Rough Guides ranked the 4th friendliest in the world! With strong support networks in place, we'll help you thrive academically and personally.

## An exceptional student experience

Liverpool could be your home for the next three, four (or more!) years, so your student experience should match our academic reputation. And, being a founding member of the Russell Group and a Top 20 UK University\*, we've a lot to live up to.

Our award-winning accommodation, top-class music and sports facilities, and lively Guild of Students (home to 200+ societies) create a full university experience on campus. All this is set in a vibrant student city, voted the UK's best in 2024 by StudentCrowd. With nearly 500,000 residents, Liverpool's spirit shapes global culture in art, music and sport.

## An investment in your future

Your future success is at the heart of everything we do – from your curriculum to support for student entrepreneurs and peer-to-peer mentoring in our pioneering Career Studio. Many of our courses offer a year in industry, ensuring you graduate ready for what's next.

\*Complete University Guide, 2025

## An award-winning education

We're proud to have been awarded 'Gold' in the Teaching Excellence Framework (TEF) 2023. An accolade that lasts for years, TEF Gold status is a mark of the highest quality teaching across undergraduate courses.



# ORIGIN *Stories*

**AMBITIOUS. ENTHUSIASTIC. DETERMINED.**

**Tanika**

Medicine student

"Coming from a Punjabi family that has worked tirelessly in the UK for generations, I was raised with the belief that education is the key to success. My great-grandmother dreamed of my grandfather becoming a doctor, and my grandfather passed that hope to his son. Now, I'm proud to be the first in my family to study medicine, turning their dreams into reality.

Growing up in a working-class household, the path to becoming a doctor wasn't straightforward. Without access to the same resources as some of my peers, I had to navigate the medical school application process largely on my own. It often felt overwhelming, but my family's resilience kept me determined, and I achieved a place at medical school on my first attempt.

Since starting my degree in 2020, the University of Liverpool has been a place of incredible growth. While I initially struggled with imposter syndrome, the supportive community here has helped me thrive. A defining moment for me was achieving a distinction in a master's degree between my third and fourth years—an achievement that once felt unattainable. My work as a student advocate has also been pivotal, giving me opportunities to grow professionally through public speaking and networking.

Though I didn't have a head start in medicine, the University has propelled me forward. I now aim to inspire others from similar backgrounds and am determined to pursue a career in surgery after medical school."



Discover more  
student stories.



# MEET OUR GRADUATES

Did you know that there are more than 270,000 bold, talented and ambitious Liverpool alumni across the world? In 189 countries to be exact! And while it may seem like a long way off until you graduate, you don't need to wait until then to take advantage of our alumni community. Here are just a few ways you can get involved.

## Events

We host a wide variety of events on campus; around the country and overseas and online.

## Networks

The University of Liverpool is ready to help you feel completely at home from day one. As well as student societies, you will have access to our global network of alumni associations and special interest groups. This is especially useful if you relocate as you will have access to a ready-made network.

## Alumni support

Our alumni community continue to stay connected with the University and share their career insights, open up their professional networks and share job opportunities with our student community.

There will be many opportunities throughout your studies to connect with members of our alumni community who are willing to share their first-hand advice through careers talks, job fairs, guest lectures, and networking events both online and on campus. Students can now also connect with graduates for informal advice and mentoring through our new *LivUni* Mentors programme.



## The Honorable Wendy Beetlestone

Chancellor of the University of Liverpool and judge in the United States District Court. Nominated to the bench by President Barack Obama (BA Hons Philosophy 1984, Hon LLD 2019).

Wendy is the University's 11th Chancellor – and is both the first female and first black person to hold this title.



**Layla Wright**  
Award-winning presenter, journalist and documentary filmmaker (BA Hons Politics with Law 2018)



**Dr Amir Khan**  
Full-time GP, TV doctor and bestselling author (MBChB 2004)



**James Quincey**  
Chairman and CEO of Coca Cola (BEng Hons Electronic Engineering 1986)

## Follow in the footsteps of:



...the first female  
Director-General  
of MI5



...9 Nobel prize  
winners



...the first female  
Judge to sit at the  
Old Bailey



...the Poet Laureate  
from 2009-2019



...the first  
Chief Executive  
of Hong Kong



...a former  
President of  
Singapore



...the BBC's Global  
Health Reporter.

# CAREERS & EMPLOYABILITY

Employability is embedded throughout your student journey, both in the curriculum you study, and in the extra-curricular activities and events open to you. Liverpool is also home the UK's first Career Studio; a welcoming campus space where student Career Coaches help you explore your options and take the next step.

The Career Studio. It is a space led by students, for students, empowered by career experts. Whether you are set on a particular career or don't know where to start, our Career Coaches will support you. The Career Studio is led by a team of 20 trained Career Coaches and has three zones: **Explore**; **Experience**; **Apply**.

## Explore

If you don't know what you want to do, or are not sure where to start, we will help you develop a career plan. We'll look at your skills and experience and how they relate to your ambitions. As part of your experience you will research different sectors and roles, learn about studying and working abroad, and discover what employers are looking for in graduate recruits. You will also find out about the latest work experience opportunities, placements, internship and graduate schemes.

## Experience

Meet leading employers at career events and experience the world of work through our programmes. Our Liverpool Launchpad scheme offers guaranteed work experience to help you get the competitive edge and for our entrepreneurial students we

provide opportunities to design your own future, including a 10-week programme with industry experts. Our work-ready experiences are open to all students, no matter what year or discipline.

## Apply

Focused support to help prepare and perfect your applications for the many opportunities that come your way. Take advantage of support with CVs and applications, practise online tests, face-to-face and video interviews, and prepare for a full-on assessment centre experience.

The University of Liverpool is one of the **Top 20 universities most targeted by leading graduate recruiters.**

The annual Graduate Report report by High Fliers surveys companies featured in The Times Top 100 Graduate Employers guide; including Apple, BBC, Goldman Sachs, Google, IBM, NHS and the UK Civil Service.



**WATCH NOW:**  
Join student Shahad as she visits our Inspired Futures careers fair.



**"Employability is deeply rooted in what we do. It's in your courses and modules; it's built into your student journey; and it's all over campus too. We make sure every student has the opportunity to experience new things and develop the employability skills they need. We're here to make sure you are equipped for a future full of success".**

**Iwan Williams**  
Director of Careers & Employability



# GUARANTEED EXPERIENCE. ACCELERATED SUCCESS.

Gain the edge you need to thrive in a competitive job market. We offer a unique blend of employability opportunities that span our vibrant city, our dynamic campus, and prestigious top UK employers.

Exclusively for University of Liverpool students, the Liverpool Launchpad initiative guarantees access to career-boosting experiences you won't find elsewhere. We understand the importance of diverse, work-based learning opportunities in shaping career paths, and with Liverpool Launchpad you'll develop essential skills, build your confidence, and connect with leading employers.



**Guaranteed Experience**



**Expert Support**



**Accelerated Success**

Exclusive opportunities include:

- **Liverpool Internships:** Paid, career-focused 80-hour placements with local businesses to gain immediate industry experience
- **Campus Jobs:** Hands-on roles within University departments to enhance your professional portfolio
- **Remote Internships:** Flexible, tailored projects in fields like technology, marketing, and finance to meet employer demands
- **Employer Challenges:** Engage directly with leading companies through campus challenges and VIP networking events
- **Extra-Curricular Activities:** Skills awards, Higher Education Achievement Report (HEAR), and global opportunities
- **Enterprise Experience:** Access to our Centre for Enterprise, including a 10-week 'Design Your Future' programme and funding opportunities.





# LIVERPOOL: THE STUDENT EDIT

Liverpool is a city unlike any other.  
Part tourist mecca, for Beatles' lovers,  
football fans and culture vultures alike.

Part creative hotspot, buzzing with  
independent spirit and never-has-to  
try-too-hard cool, all wrapped up  
in our unique warmth and humour.

We asked our students *Zack, Chelsea*  
and *Sarah* to share their Liverpool with you.

liverpool.ac.uk



*Zack*

Computer Science student

*"Discovering this energetic and charming city has been an absolute pleasure!"*

*"Liverpool is the gift that keeps on giving!"*

Hi! I'm Zack (he/him), I'm from Bradford, West Yorkshire, and before moving to Liverpool for my studies, I had only visited the city once - for the University's Open Day.

Discovering this energetic and charming city has been an absolute pleasure throughout my student life. Even after three years living here, I'm still uncovering new favourite spots over the city - Liverpool is the gift that keeps on giving!





# Music

Liverpool is renowned worldwide for influencing the history of music, largely down to being the birthplace of The Beatles. But whatever genre of music you're into, you'll find it in abundance here. Of course, there's the famous **Cavern Quarter** and **Mathew Street** – where you'll find loads of live acts every day of the week. Established and up-and-coming DJs showcase their talents in venues like the **Invisible Wind Factory**, and Liverpool is home to a thriving scene of rock and metal bands – you'll find affordable gigs in bars like **Jacaranda**, **Heebie Jeebies** and **Zanzibar**. What's more, Liverpool is a stop-off for many world-famous artists at venues such as the **M&S Bank Arena** and **Anfield Stadium** – we've recently welcomed Elton John, and Taylor Swift is in town this year as part of the Eras tour!



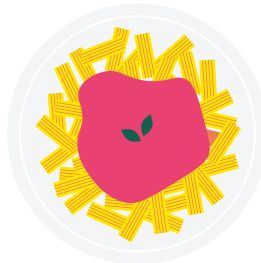
# Shopping

Every high-street brand is accounted for in **Liverpool ONE**, the city's central shopping centre: home to over 100 brands. If vintage clothing is more your speed, there's a few fantastic vintage shops on **Bold Street** including **Resurrection** and **Soho's**.



# Food

A multicultural and cosmopolitan city, Liverpool is home to an incredible food scene. One of my favourite spots is **Bold Street**; the road is packed full of independent bars and restaurants from a variety of cultures; from Japanese to Italian, Mexican to Turkish! Personally, I have to recommend **Fogo Brazil** an all-you-can-eat meat buffet – but don't worry, vegetarians and vegans are well catered for in venues like **Bundobust!** Throughout the city centre we're blessed with food markets like **Baltic Market** and **Renshaw Street Market** – these are home to multiple vendors and great social spaces to hang out with a group of indecisive friends! Other student favourites include **Big Bowl Noodle Bar** and **Rudy's Pizza** – you're really spoiled for choice. If you're looking for a familiar venue, you'll find all the usual fast food offerings – including some rarer international brands like **Jollibee** and **Popeyes**.



# Arts and Culture

Once a UNESCO World Heritage Site, Liverpool is home to over 2,500 listed buildings – the gorgeous architecture you'll find around the city from **St George's Hall** to the **Albert Dock** is like stepping into a movie set. In fact, loads of films use Liverpool as their backdrop – from Batman to Harry Potter!

Did you know that Liverpool is home to the most museums and art galleries in the UK outside of London? **The Museum of Liverpool** along the docks is a great starting point to learn more about the social, technological, and political history of Liverpool (and free to visit!). A short walk from Lime Street Station, the **World Museum** features multiple floors of artefacts from across the world – including a fantastic Ancient Egypt collection. **The Walker Art Gallery** is famous for its entrancing collection of renaissance-period artwork, whereas **Tate Liverpool** showcases more modern art exhibitions, located on the beautiful Albert Dock.

For theatre fans, don't miss the brilliant shows on at the **Everyman & Playhouse**, **Royal Court** or **Empire Theatre** – there's truly something for everyone!

Hope you found my Liverpool helpful!  
Zack



**Chelsea** Psychology student

## My favourite outdoor spaces

Liverpool is known for its rich culture, music scene, and open spaces, offering students a chance to unwind. **Sefton Park**, a 200-acre city gem, features a boating lake, two cafés, and a Victorian palm house that doubles as an event space. Whether jogging, picnicking, or simply relaxing, it's a peaceful escape from campus life. Running clubs have been popping up all over Liverpool – I personally recommend the one at Sefton Park, which is a great way to stay active, meet new people, and enjoy the outdoors.

Beyond green spaces, Liverpool is super close to some stunning beaches. **Fornby Beach**, a National Trust site, is perfect for scenic walks and spotting red squirrels, just 25 minutes by car or 40 minutes by train. Nearby, **Ainsdale Beach** offers golden sands, dunes, and water activities, with university societies providing opportunities to get involved.

### Game On: Liverpool's Thriving Sports Culture

Liverpool's sporting heritage offers exciting opportunities for fans and players alike. Football dominates, with **Liverpool FC** and **Everton FC** bringing electric atmospheres to **Anfield Stadium** and **Goodison Park**. If match tickets are hard to get, stadium tours are really fun and showcase over 126 years of history.

The **Grand National** at **Aintree Racecourse** is a must-see, while tennis fans can watch elite matches at the **Liverpool International Tennis Tournament** at Liverpool Cricket Club. Cricket lovers can catch games at **Aigburth Cricket Ground**.

With gyms, clubs, and fitness classes across the city, staying active is easy. So, whether it's football, running, tennis, or swimming, Liverpool offers endless ways to get involved and stay fit.



*This was my Liverpool... I hope you enjoyed it!*  
**Chelsea**



**Sandra** Medicine student  
**Community and faith**

Your community in Liverpool can be as big or small as you like. It might come from halls, student societies, or shared interests in sports, music, or culture. Whatever you're into, there's a place for you.

Liverpool is home to one of Europe's **oldest Black communities** and a **historic Chinatown**, featuring the largest Chinese arch outside China. Both have shaped the city's vibrant culture, festivals, and student life.



Liverpool has churches, temples, synagogues, and mosques, many offering student-led activities. The city is home to not one, but **two cathedrals** – the Anglican Cathedral (the largest in Britain!) and the striking Metropolitan Cathedral right on the doorstep of campus.

For Muslim students, **Al-Rahma Mosque** is Liverpool's largest, and **Princes Road Synagogue** is at the heart of the Jewish community.

Faith-based societies, like the Islamic Society, offer support and events. Personally, I'd recommend the Gloryland Student Church in the Guild as a welcoming space and the LJMU Gospel Choir, open to all who enjoy singing.

Wherever you're from and whatever you believe, Liverpool has a community for you.



My Liverpool by Sarah  
English student



# A night out for all

As well as its thriving music scene, Liverpool is famous for its nightlife – often coming top in the polls for the UK’s best night out. From secret speakeasy-style cocktail bars, to lively events venues like **Camp & Furnace** (birthplace of Bongos Bingo) and rooftop venues like **Oh Me Oh My** with unbeatable views, the city has it all. The heart of student nightlife is often **Concert Square** or **Seel Street**, home to bars and clubs that host dedicated student nights every day of the week.

The stereotypical student clubbing and drinking culture can be fun, but it understandably isn’t for everyone. The great thing about Liverpool is there’s loads to do no matter what your interests are, and you can still find a great night out even if you don’t feel like hitting the clubs.



One of my personal favourite things to do with friends is a quiz – the University of Liverpool regularly hold big quizzes for students, as well as other pubs in the local area such as **The Cambridge pub**, which you can find in the campus area, round the corner from Abercromby Square. On top of that, lots of bars host open mic or live music events in the afternoons and evenings, one of my favourite places being the **Cavern Club**, although I have recently discovered a love for jazz music from attending specific music genre themed nights at cocktail bars close to **Bold Street**. If you want to stay away from the bars completely, maybe consider a late evening trip to places like **Golf Fang**, **Gravity Max**, or even the cinema – **Fact Liverpool** is a great one. Activities like these are always super enjoyable and are the perfect way to meet people and spend time with friends. After all, studying may be important but you should also try and make the most of your university experience and take care of your wellbeing.



liverpool.ac.uk



## TRAIN JOURNEY TIMES FROM LIVERPOOL LIME ST STATION TO:

Edinburgh	3hrs 30min
Glasgow	3hrs 20min
Newcastle	2hrs 55min
York	1hrs 45min
Leeds	1hrs 20min
Manchester	35min
Birmingham	1hrs 35min
Cardiff	3hrs 30min
Bristol	3hrs 15min
Plymouth	5hrs 20min
London	2hrs 10min
Norwich	5hrs
Peterborough	3hrs 10min
Milton Keynes	1hrs 40min

We're in the middle of the country with great transport links to anywhere in the UK.



Liverpool John Lennon Airport offers flights to an extensive list of European destinations, as well as easy connections to long-haul destinations via Frankfurt Airport. Direct flights to other parts of the UK including Belfast are available daily.



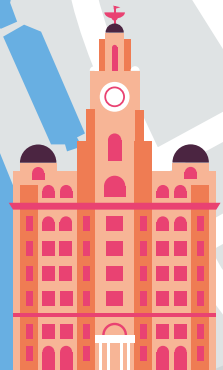


**Crosby Beach**  
Home of Anthony Gormley's Another Place.



**Mersey Ferry**

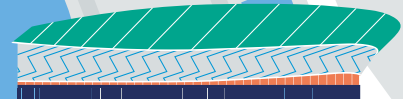
**The Liver Building**



**Liverpool ONE**  
Over 150 retailers – from high street favourites to designer fashion – make this a shopper's paradise

**Museum of Liverpool**

**The Royal Albert Dock**



**M&S Bank Arena**  
Major events venue showcasing international music artists, comedy and sport – and home of the Eurovision Song Contest 2023!

# A CITY CENTRE CAMPUS



**St George's Hall**



**Radio City Tower**

**Lime Street Station**

**Bold Street**

One of the city's most vibrant food & drink hotspots



**Metropolitan Cathedral**



**China Town**



**Anglican Cathedral**



**Baltic Triangle**



A trendy hub for independent bars and creative hotspots

**UNIVERSITY CAMPUS**



**Victoria Gallery and Museum**

A walk from our University Campus to The Royal Albert Dock takes around 20 minutes.

Sefton Park and Greenbank Student Village approx 3 miles this way.

# ACCOMMODATION

University of Liverpool accommodation provides much more than just a place to sleep. It's a ready-made community where you'll make friends in a safe, supported environment. We have over 5,000 student rooms across our popular student village, city campus residences and with our city-based private providers.

## Choosing your accommodation preferences

### Living in halls

Living in University accommodation offers true flexibility. We provide short contract lengths so that you are only here when you need to be, we don't require a deposit or guarantor, and if your plans change before you arrive, we will release you from your agreement. We have an incredible support team of Wardens and Residential Advisers in the halls to support you, as well as a fantastic offering of events and activities from our Halls Life Team. Students love living with us.



### Prefer to stay in your family home?

If you choose to stay at home or with family, you will not have to miss out on student life. There are lots of ways you can get involved in campus life, whether that be attending our dedicated local student welcome event or getting involved in a range of opportunities to make connections such as playing sport, joining societies, joining ambassador programmes and getting involved with your department... there is something for everyone!

For the latest accommodation fees see [liverpool.ac.uk/accommodation](https://liverpool.ac.uk/accommodation)



### Greenbank Student Village or City campus?

Greenbank Student Village is a stunning, modern, fully en-suite property set within beautiful parkland in the leafy area of Mossley Hill. It is situated about three miles away from the city campus and offers the best of both worlds: close to the hustle and bustle of the city centre and a peaceful, relaxing setting for you to live.

Greenbank students have access to an onsite gym, 5-a-side football and basketball pitches, as well as three stunning parks all in walking distance. You are connected to campus by the subsidised 699 bus, or alternatively you can use the cycle route through two parks to make your own way to campus.

Our city campus residences (Vine Court, Crown Place, Melville Grove and Philharmonic Court) are within easy walking distance of all academic departments as well as the Sports Centre, Guild of Students and city centre. With the option of self catered, en-suite and shared bathroom accommodation; there is something to suit all your needs on campus.

In addition to our halls on campus, we also have rooms available with Unite, Kaplan and Student Roost. These properties are all within a 5 minute walk to campus, boast ensuite rooms and are another great affordable option.



## GOOD TO KNOW



### Accommodation guarantee

We offer guaranteed University of Liverpool accommodation in either our own halls or preferred providers to all students who make us their first choice (firm) university and apply for accommodation by 31 July 2026.



### Applying for accommodation

You are able to apply for accommodation as soon as you have received your offer to study. You do not need to choose us as your firm choice before applying. We recommend that you apply as soon as possible, as rooms are offered on a first come, first served basis. There is no deposit required to book accommodation.



**WATCH NOW:**  
Your new home next September?



### VINE COURT **SE CE**

Students at residence: **750**  
Students per flat: **2-16**  
Weekly Rent (2025-26): **£205 - £265**

### CROWN PLACE **SE**

Students at residence: **1,257**  
Students per flat: **3-8**  
Weekly Rent (2025-26): **£187 - £239**



### MELVILLE GROVE **S**

Students at residence: **338**  
Students per flat: **6-9**  
Weekly Rent (2025-26): **£173 - £181**

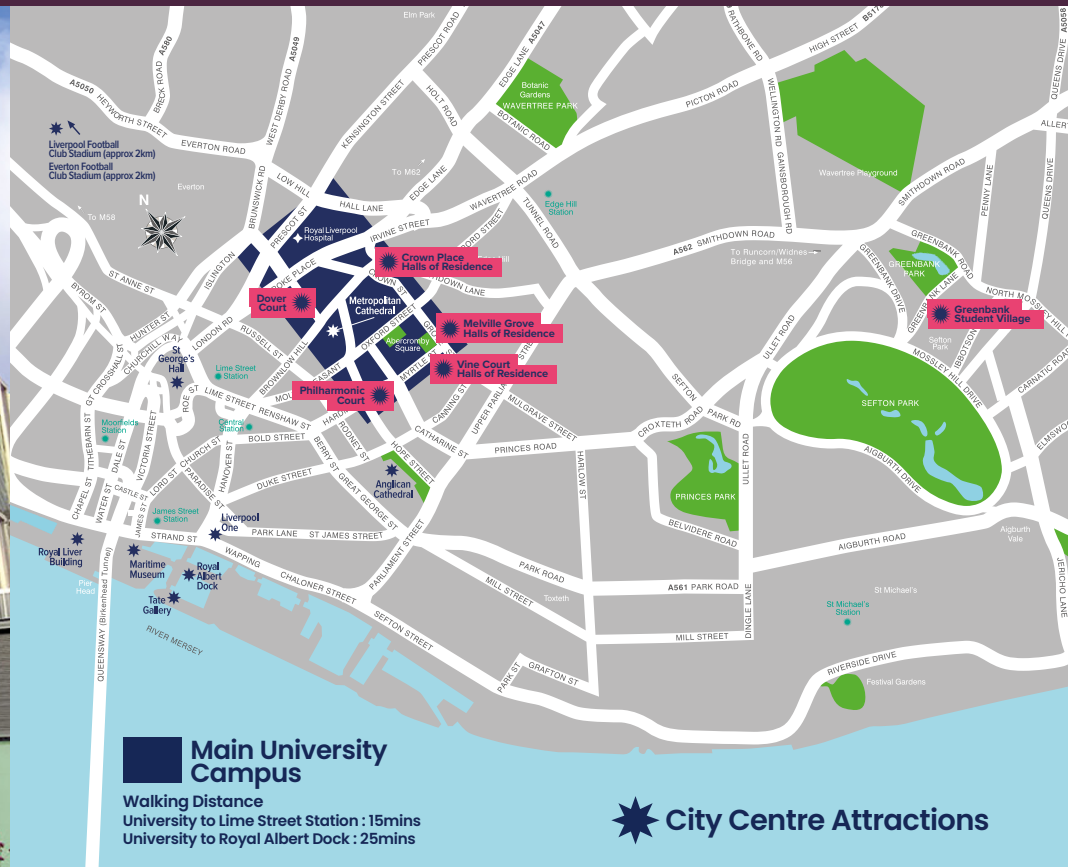
### PHILHARMONIC COURT **SE**

Students at residence: **354**  
Students per flat: **4-6**  
Weekly Rent (2025-26): **£214 - £266**

**TAKE A  
TOUR OF OUR  
ACCOMMODATION**

[liverpool.ac.uk/  
virtual-tour](http://liverpool.ac.uk/virtual-tour)

All accommodation  
includes high speed Wi-Fi.



### Main University Campus

Walking Distance  
University to Lime Street Station : 15mins  
University to Royal Albert Dock : 25mins

City Centre Attractions

### GREENBANK STUDENT VILLAGE **SE**

Students at residence: **1,350**  
Students per flat: **4-9**  
Weekly Rent (2025-26): **£173 - £237**

### Accommodation Key

- S** Self-catered shared bathroom
- SE** Self-catered en-suite
- CE** Catered en-suite



T: +44 (0)151 795 0319 E: [accommodation@liverpool.ac.uk](mailto:accommodation@liverpool.ac.uk)  
[liverpool.ac.uk/accommodation](http://liverpool.ac.uk/accommodation)

# ORIGIN *Stories*

**CONFIDENT.  
SUPPORTED.  
SUCCESSFUL.**

**Georgie**  
Marketing student

"University wasn't always on the cards for me. I'd grown up thinking I'd become a singer or work in performing arts, but after getting my A-Level results I realised that a degree might actually be the right path for me. I chose to study Marketing at the University of Liverpool.

Liverpool is really far away from my hometown of Southampton, so coming to study and live here pushed me out of my comfort zone a lot. Moving to a new city was hard at first, because I usually dislike change. However, a couple of years later, those worries are all gone. Coming to Liverpool has truly been one of the best decisions I've ever made... and I now think that change is exciting!

I'm thrilled to say that during my time here, I've excelled academically. I've also become much more confident and independent; I've just completed a placement at Rolls Royce as part of my programme's year in industry – something I'd never imagined I'd be doing just a few years ago.

The support that I receive from the University has helped me to find and create opportunities for myself that I've always aspired to, but never thought I could push myself to achieve. I hope to see my academic endeavours and future career prospects continue to flourish throughout my time at the University of Liverpool."



**GREGARIOUS.  
DRIVEN.  
COMPASSIONATE.**

**Matty**  
English student

"I had never seriously considered university during high school, as I had planned to join the RAF. Although my parents always encouraged me to study hard, university seemed a distant idea.

That changed when, in Year 10 or 11, universities visited my school. The University of Liverpool's stand, with its prestige and student-focused approach, instantly caught my attention. As a proud Merseysider, I loved how the university represented the city's culture and heritage. This experience had a lasting impact as I completed my A-levels. I knew I wanted to study in Liverpool, and after attending several open days, my decision was clear. Being the first person in my family to apply for university, I was nervous about the unknown. However, the welcoming atmosphere at the open days eased my worries. Everyone I met was genuinely interested in my story and eager to help me succeed.

As a Liverpool Advocate, I now inspire others to pursue their dreams, a role that is incredibly rewarding. The University has been nothing short of fantastic. Despite the challenges, the support from lecturers, particularly in English, has been invaluable. I love the university so much that I've decided to pursue my PGDL, Masters, and Bar course here. They won't be getting rid of me anytime soon!"



Discover more  
student stories.





# ACCESSIBLE TO EVERYONE

On and off campus, you'll meet people and ideas of every kind. It makes learning here a uniquely rich experience. And it shows that, when it comes to our civic roots, we're as open and accessible as we've always been.

We're committed to being a place where people from all walks of life can learn. For some students, going to university may have always seemed an obvious next step. But for many of our students that's not the case. There is no "one-size-fits-all" type of University of Liverpool student. We're proud to support our students to start their journey with us, through a range of innovative support and guidance, and we're equally proud of our record in helping our students to succeed while they are here – and to go on to great things

## Contextual admissions

Our contextual admissions strategy means that some groups who have experienced barriers to their education may be made an offer which is different from our standard offer. See page 52 for more information.

## Foundation programmes and alternative routes

We offer a wide range of Foundation programmes and alternative routes for students coming to us from different backgrounds. See the programme section of this prospectus, pages 52–65, and the Applying section, pages 66–67 for more information.



"The Widening Participation and Outreach team at the University have been a real lifeline to me; continuously supportive and helped me to overcome many challenges. It's because of this incredible support that I decided to become a university advocate alongside my studies; talking to and assisting prospective students from similar disadvantaged backgrounds".

**Elouise**  
Dentistry student

# A GLOBAL UNIVERSITY



@livuniglobal

We're a cultural melting pot, welcoming over 7,000 international students from across the globe to our community. Our mix of nationalities enriches us. We learn from each other, create lifelong friendships and develop new ways of seeing the world.

We support our international students from the very start of their journey before they apply, through to arrival and throughout their time at Liverpool. When our students graduate, they become valued and active members of our alumni community around the world. Find information on:

- Pre-sessional and in-session English language courses with our English Language Centre [liverpool.ac.uk/english-language-centre](https://liverpool.ac.uk/english-language-centre)
- Foundation programmes for international students [kic.org.uk/liverpool](https://kic.org.uk/liverpool)

- Applying to the university as an international student (including entry requirements and fees and scholarships) [liverpool.ac.uk/study/international](https://liverpool.ac.uk/study/international)
- Support services for international students (including guidance on visas) [liverpool.ac.uk/studentssupport/visas-and-immigration/](https://liverpool.ac.uk/studentssupport/visas-and-immigration/)



"Studying at Liverpool as an international student has been a captivating and enriching experience. Since being here, I've greatly enhanced my career prospects. Not only have I honed my English language and improved my communication skills, I've broadened my global perspective by experiencing diverse cultures, societies and a strong academic environment. The connections I've made here – both friends and professional contacts – are invaluable."

**Jeongwook Lee**  
International Business student



**International students – start your story at Liverpool.**

# INCREDIBLE STUDY SPACES

Our two main libraries – Sydney Jones and Harold Cohen – offer everything you need to succeed. Access extensive books, digital resources, and computers, plus well-equipped study spaces and expert, friendly staff. With 24/7 access and unique archives, they provide the perfect environment to support your learning and research.



Our library collections include everything on your reading lists, available in print—there are over 2 million print books—or online, with extensive collections of over 900,000 eBooks and eJournals, all accessible 24/7. Students can also suggest additional books for the library to purchase, ensuring the collection stays relevant to your needs. The breadth of our collections enables you to explore beyond your reading lists, helping you expand your knowledge and develop expertise. Each subject has a dedicated Liaison Librarian who can provide specialist advice and guidance to help you make the most of the library's resources.

We also offer two popular one-to-one tutorials run by postgraduate students, designed to help you improve your academic writing and use statistics effectively in your work. Whatever your study preferences, the library has you covered with zoned workspaces for silent, quiet, and group study. When you need a break, you can grab a drink in the Library Café or catch up with friends in the library's social spaces. The library isn't just about studying—you can also access thousands of physical books, audiobooks, films, and TV programmes for free. Our Leisure & Wellbeing collections are curated to help you relax and recharge whenever you need to.



**KnowHow** is a free service for all University of Liverpool students to help you develop your academic skills and excel in your studies. It offers online and face-to-face workshops and resources on everything from essay planning and referencing to preparing for exams and managing your time effectively.

[liverpool.ac.uk/library](https://liverpool.ac.uk/library)

[X](https://twitter.com/LivUniLibrary) [@LivUniLibrary](https://www.instagram.com/LivUniLibrary)

UNIVERSITY OF LIVERPOOL



**WATCH NOW:**  
Get to know our libraries!

# SUPPORTING YOUR LEARNING

Beyond the classroom, we offer a range of services and facilities to help you get the most out of your degree.

## IT SERVICES



At the University of Liverpool, we provide **24/7 IT support** through various channels, including our self-service portal, to help with any technical issues. Our extensive **knowledge base** offers how-to guides and video tutorials, enabling you to resolve common problems independently.

Across campus, there are over **2,000 computers** available, with high-speed Wi-Fi throughout the university. We also offer **free software**, including Microsoft Office, SPSS, and Matlab, for installation on personal devices.

Our specialist **mobile apps** give you easy access to timetables, coursework, and other academic resources on the go, keeping you connected wherever you are.

With these services in place, we make sure that your IT needs are fully supported, so you can focus on what matters most – your studies.

[liverpool.ac.uk/it](http://liverpool.ac.uk/it)  
X @LivUniIT

## OPEN LANGUAGES



Why limit your learning to just your degree? At the University of Liverpool, you have the chance to explore a world of opportunities by learning a new language. Language skills not only open doors but also help break down cultural barriers and enhance your future career prospects. Every student at Liverpool can take advantage of the opportunity to learn a language during their time here. Depending on your course, this could be part of your degree or an extracurricular activity you pursue alongside your studies.

No matter which option you choose, you'll have access to a wide range of languages, including French, German, Chinese (Mandarin), Italian, Spanish, Portuguese, and Catalan. Additionally, Open Languages offers Arabic, Irish, Japanese, Korean, and Russian, which can be taken either as part of your degree or as an extracurricular activity. Our courses are available at beginner, intermediate, or advanced levels, ensuring there's something for everyone, no matter your experience.

Explore more at: [liverpool.ac.uk/undergraduate/languages](http://liverpool.ac.uk/undergraduate/languages)

# ORIGIN *Stories*

**RESILIENT.  
AMBITIOUS.  
COMPASSIONATE.**

**Ayush**  
Mathematics student

"I completed sixth form during the pandemic and began studying maths at another university. Like many, I faced isolation and uncertainty; the restrictions made it hard to connect, and my mental health suffered. By the end of the year, I couldn't continue.

After a year out where I gained invaluable work experience, I felt ready to take on higher education again. It was then that I applied to study maths at Liverpool, determined to approach things differently.

This time around, I've immersed myself in university life. I'm proud to be a course representative; ensuring my peers' voices are heard. I also now work for the University as a Student Advocate; working at open days, running campus tours, and taking part in outreach programs to inspire younger students and future applicants. Sharing my story allows me to encourage others to see Liverpool as a place to thrive.

The University of Liverpool has given me incredible friendships, a supportive environment, and a true sense of belonging. It's provided something I didn't know I needed; hope. Hope that no matter your background or challenges, you can find where you belong."

Discover more student stories.



**WATCH NOW:**  
Mechanical Engineering student Yoshino shares her experience of learning Spanish alongside her degree!

# YOUR SUPPORT NETWORK

Whatever your circumstances, we have the support network in place to help you get the most out of your studies and time at university. From mental health and counselling to money advice, there is a team here dedicated to supporting you.

## Childcare

Our purpose-built Children's Centre on campus provides full-day care for nursery age children as well as playschemes during school holidays. [liverpool.ac.uk/childcare](http://liverpool.ac.uk/childcare)

## Disability Advice and Guidance

Where you choose to disclose a disability, we will work closely with you and your department to put in place the support that works for you. Please get in touch via our website if you wish to discuss your specific requirements.

For mental health and wellbeing support see pages 34-35.



## Faith

The University is a multi-faith campus and has a number of Chaplains and Associate Chaplains who provide pastoral and faith support to students. We have four official chaplains - Anglican, Catholic, Jewish and Muslim - but they can also help contacting other faith groups.

## Student Health

Brownlow Health is a full-time general practice offering a number of GP services to students on campus. We offer a wide range of services including diabetes, sexual health, mental health, eating disorders, alcohol and drugs. Many things can be dealt with without the need for a trip to the practice, and we can now use eConsultation to make sure you see the right person, in the right place, at the right time. [central.brownlowhealth.co.uk](http://central.brownlowhealth.co.uk)

## International Advice and Guidance

We work with students, academic departments and the Guild of Students to help our international students get the most out of their studies. This includes everything from specialist immigration advice to help with personal and practical issues.



"I love the feeling of being secure and supported at the University of Liverpool. My School provides a multitude of support networks and systems. From personal academic advisers to careers guidance, to wellbeing and specific international student support, the University makes it so easy for students to reach out for help".

**Holly Wu**  
Physiotherapy BSc

## Safety on campus

The University is committed to providing an environment that enables our students, staff and visitors to feel safe at all times while on campus. As part of this, we have a 24/7 campus support team, extensive CCTV coverage, chaperone service and even an on-campus police officer.

## Our commitment to a safe environment

We have expectations around behaviour that are covered by our student conduct policy. This covers rules relating to students conduct on and offline, and on and off university premises.

## Report and support

This online tool is available for all students and staff wishing to seek advice and support for any incident of bullying, harassment, sexual violence, domestic violence, hate crime or discrimination. The tool is free and users can choose to post anonymously if they wish.

# MENTAL HEALTH AND WELLBEING

Being at University is an exciting phase of your life, but almost certainly will bring some challenges. Studies have shown that over one in three students will experience poor mental health at some point during their studies, so it's important that you know how best to look after your mental wellbeing – and where you can access support when you need it.

## The Wellbeing Team

Our Student Wellbeing Practitioners provide confidential, non-judgemental support on campus and remotely.

We offer several forms of support such as Mental Health Clinics, wellbeing activities and workshops and tailored support.

Our students can feel confident to get in touch with the Wellbeing Team for advice on anything that is worrying them at any time during their studies.

## Mental Health Advisory Service

Our services are here to support students experiencing issues with their mental health. We offer a recovery-focused approach which is underpinned by the key values of inclusion, care, collaboration and compassion.

As well as providing support to our current students, we are happy to speak to anyone considering applying to study here who may wish to find out more about our services.

## Counselling Service

Anyone, at any time, can have thoughts and emotions that may feel overwhelming. The Counselling Service helps students explore how they think, behave and feel about an issue and help them to find appropriate ways to make changes in their lives. We offer a confidential, inclusive service with qualified therapists trained in a range of evidence-based psychological therapies.

Our service provides a supportive pathway with a stepped care model; this means that students can access us quickly via the Wellbeing team and get the most effective help for their needs.



**WATCH NOW:**  
See how we've got involved with the ADHD Foundation's Neurodiversity Umbrella Project on campus!

# PLAN YOUR FINANCES

There is a wide range of financial support available for students starting their studies in 2026 to help with tuition fees and living costs. To find out more, including how and when to apply, visit [liverpool.ac.uk/money](https://liverpool.ac.uk/money)

## Tuition fees

Fees have not yet been announced for 2026 entry, however as a guide tuition fees for 2025 are £9,535. Lower fees apply for years spent in industry, years abroad and foundation years. For more information, please see [liverpool.ac.uk/money](https://liverpool.ac.uk/money)

## Study costs

As well as standard tuition fees, you may have some extra study costs depending on your programme of study. For more information about these programme-specific costs, please see the relevant course pages online at [liverpool.ac.uk/courses](https://liverpool.ac.uk/courses)



# MANAGING THE COST OF LIVING

We understand that financial challenges can be a significant cause of anxiety, affecting mental health, ability to focus on study and general wellbeing.

The cost of living in Liverpool can be lower than some other UK cities, and there are a wide range of part time job opportunities both in the university and the city that can help you balance your finances. You won't be on your own, we are here to help and support you every step of the way.

## Money Advice & Guidance Team

Our Money Advice & Guidance Team is helping our students to manage the rising cost of living in a number of practical ways, whether it is with unexpected short-term costs, or with long-term financial management. The team provides confidential one-to-one appointments to students in need. More information can be found at [liverpool.ac.uk/studentsupport/money-advice](https://liverpool.ac.uk/studentsupport/money-advice)

## Support for students

Our University Hardship Fund offers a lifeline to eligible students experiencing financial issues with essential expenditure such as rent or bills, or one-off exceptional costs that could not have been foreseen and is causing hardship, such as additional travel home due to family illness.

The Student Food Pantry is a community hub set up in response to the cost of living crisis. Offering a range of products to its members - from food cupboard staples to personal hygiene and cleaning products - the service partners with campus sustainability, facilities and catering teams to provide free period products and redistribute food that would normally go to landfill.

## Earn while you learn

Job opportunities and careers support are all available via our online careers platform, Handshake. The platform can be used to help students find part-time employment to supplement their income during their studies, as well as graduate opportunities towards the end of their degrees.



**WATCH NOW:**  
Student Anjali shares her top tips for budgeting as a student.

# GLOBAL OPPORTUNITIES

One of the most valuable experiences you can take advantage of while at university is the opportunity to study abroad. At Liverpool, we provide a fantastic range of Global Opportunities, enabling you to experience new cultures, graduate with an excellent degree and boost your employability.

Our global opportunities programmes give our students the chance to spend time living and studying abroad. With lots of incredible partner universities to choose from across the world, you could enhance your university experience by immersing yourself in Chinese culture, studying in the sun in Spain or embracing college life in the USA!

## So, where will your degree take you?

The destinations and programmes available to you depend on your degree subject. Our search tool on our website ([liverpool.ac.uk/global-opportunities](http://liverpool.ac.uk/global-opportunities)) will give you an indication of the options that might be suitable for you.

## How does this fit in with your studies?

**Year Abroad:** Students studying the majority of our programmes are able to apply for the exciting opportunity to add an extra year onto their programme, spending one academic year at one of our partner universities around the world studying local history, culture and language, as well as subject-related modules.

**Semester Abroad:** Spend a term overseas, usually during your second year, studying modules from your subject area. This option does not add any extra time to your degree.

**Summer Abroad:** Do something different with your summer holiday and take a few weeks to study, work, or volunteer abroad.

liverpool.ac.uk/global-opportunities



The experience of a lifetime. Where could Global Opportunities take you?

UNIVERSITY OF LIVERPOOL



GOOD TO KNOW



You don't need to speak the host country's language to take part.



You are still eligible for Student Finance funding.



Grants and scholarships may be available.



You'll be supported by Liverpool and your host university while you're away.



# LIVERPOOL GUILD OF STUDENTS

Liverpool  
Guild of  
Students

Introducing the Guild: **our famous students' union**  
that has been looking after students since 1889.



Sitting at the heart of campus, Liverpool Guild of Students opens doors to possibilities that enrich our students' experience; make friends for life, learn something new and boost their employability. It's all waiting for you at the Guild. From activities to advice, campaigning to volunteering, there's something for everyone to get involved with.

Led by a team of student officers - elected by a campus-wide vote - the Guild acts as an independent voice that speaks up for the things that matter the most to our students, and campaigns for positive changes to better the student experience.

### Home away from home

The Guild is where everything takes place. Find the cheapest meal deal on campus at the Guild Shop, chill out in the Courtyard and watch live sports, treat yourself to a post-lecture drink at the Sphinx, or heat up your lunch and make the perfect brew at the free hot water and microwave station in the building. With a place for everyone, there's nowhere better on campus.

### A Guild for everyone

The Guild offers a huge range of activities to get involved in outside of your studies. With 200 societies from Dance to Debate and Baking to Ballroom, a wide range of volunteering opportunities and an amazing array of sustainability projects, there's plenty of things to get stuck into. And the Mountford Hall is one of the biggest venues in the city for live music, with everyone from Dermot Kennedy to KSI, The Wombats to the Happy Mondays, playing on your doorstep.

### Fight for the things that matter

The Guild is committed to making the student experience the best it can be, and that its members see the change they need on campus. Students can have their say in a variety of ways; from participating in campaigns to becoming a course rep. In recent years, student-led campaigning and feedback received via the Guild has seen the University divest from fossil fuels and cut the cost of student rent.

### Here to help

We all might need extra support sometimes. The Guild's advice team is a confidential and independent service that supports students with a range of wellbeing, academic and housing issues.



**WATCH NOW:**  
Take a sneak peek inside the  
Reilly building to see some  
of the Guild hotspots!



# SPORT LIVERPOOL

**Whatever your level of sport, there's something at Liverpool for you. As we set out plans to be the UK's most active campus by 2026, we aim to engage every single student through healthy, enjoyable activity as well as supporting our sports teams and performance athletes to be the very best they can be.**

## OUR FOCUS

### Health & Wellbeing

Improving health and enriching the lives of our student population by increasing levels of participation in physical activity and sport.

### Student Success

Supporting our students to excel in sport and in life through opportunities to train, compete, learn, lead and communicate.

### Building Community

Building a stronger campus community by organising events and activities that bring people together to enjoy shared experiences, develop friendships, build social trust and a sense of pride in belonging to the University.



**WATCH NOW:**  
Become a goal-getter  
with Sport Liverpool

### Excellent facilities

Our on-campus Sport and Fitness Centre offers a 25 metre swimming pool, sports halls, squash courts, dance and spinning studios, bouldering wall and brand-new climbing wall, gym (with specialist strength and conditioning facilities) and weight training area. Organised group exercise classes to suit all levels of ability, with personal training sessions available. There is also a gym and sports facilities at Greenbank Student Village. Sports pitches and training facilities are located at our Wyncote Sports Ground, approximately 3 miles from campus.

Getting active is a lifestyle at Liverpool and there's plenty of stuff to do for free on campus too, with a running track, a container gym, and a half basketball court.

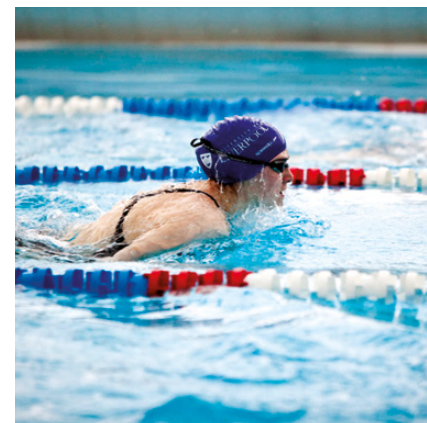
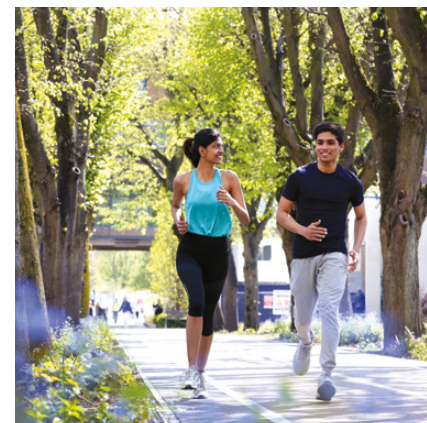
### Get involved

Sports are available at three levels:

**Club Sport.** Join one of our 53 student-led sport clubs, most of which represent us in the British Universities and Colleges Sport leagues (BUCS) and with the majority of clubs accepting beginners, now is your chance to try something completely new!

**Campus Sport.** Campus Sport gives you the opportunity to take part in sport at a recreational level. There are internal leagues in football, netball, hockey and futsal.

**Turn up and play.** Keep fit and enjoy the sports that you love on an informal basis.



## PERFORMANCE PROGRAMME

The Performance Programme is designed to support talented student athletes who are competing at a high level within a Sport England and BUCS (British Universities and Colleges Sport) recognised sport. The competitive scheme which is open to incoming or current University of Liverpool students provides a range of support services including physiotherapy, strength and conditioning, sport psychology and nutrition support.

E: [athlete@liverpool.ac.uk](mailto:athlete@liverpool.ac.uk)  
[liverpool.ac.uk/sports/  
team-sport-liverpool](https://liverpool.ac.uk/sports/team-sport-liverpool)

# A CAMPUS FULL OF CULTURE

Whatever you're into outside of the classroom, our campus is a cultural destination in itself. From our artsy campus sculpture trail to lively gigs and serene gardens, the University of Liverpool really does have something for everyone.

## Home to two museums

The Victoria Gallery & Museum, housed in our iconic redbrick clocktower building, offers a fascinating insight to the history of the University and further afield. Discover historic and contemporary art, and explore the University's heritage collections of scientific, medical and natural history.

How many Universities have you been to that are home to a real Egyptian mummy? The Garstang Museum is the University of Liverpool's museum of archaeology, founded in 1904. Collections include artefacts excavated from Egypt, Sudan and the Near East with highlights including an exceptional Nubian collection and Egyptian Afterlife gallery.

## Music on Campus

For gigs and live concerts, students have an amazing choice of events, many of which are free. The Tung Auditorium is a new, state-of-the-art 400-seat auditorium delivering a prestigious musical programme for the City of Liverpool, and Mountford Hall is a well-known tour stop for internationally renowned artists such as Sam Fender, The 1975 and Blossoms.

## Liverpool Literary Festival

Here at the University of Liverpool we're proud to host the annual Liverpool Literary Festival, which takes place on campus each autumn. Now in its ninth year, the festival is a celebration of the written word and features three days of discussions, workshops, readings and debates. Open to students and public alike, our English Department hosts an exceptional line up of guests including best-selling authors, poets and broadcasting legends.

UNIVERSITY OF LIVERPOOL



**WATCH NOW:**  
The Victoria Gallery & Museum is the jewel in our crown, and the perfect place to spend a relaxing break from studying!

YOKO ONO LENNON CENTRE  
HOME OF THE TUNG AUDITORIUM

UNIVERSITY OF LIVERPOOL



**WATCH NOW:**  
The Beatles are arguably Liverpool's most loved export, and we're proud to have our very own John Lennon sculpture here on campus.

## At the heart of the city's celebrations

At the University of Liverpool, we love being part of our city's vibrant cultural life, getting involved in major events that bring people together. From global events to grassroots festivals, our campus is a hub for creativity and community.

Each year, our Tung Auditorium plays host to events for **BlackFest**, a city-wide celebration supporting Black artists and creatives across Liverpool. When Taylor Swift brought **The Eras Tour** to town, our very own Institute of Popular Music marked the occasion with *Tay Day* - an academic symposium exploring her work and cultural impact, alongside live music and festivities on across campus. And during the **Eurovision Song Contest 2023**, we joined in the celebrations with festival vibes on Abercromby Square and hosted performances from artists and local schools.

Wherever something's happening in Liverpool, we're proud to be part of it.

# ORIGIN *Stories*

**OPTIMISTIC. DILIGENT. PASSIONATE.**

**Shaniqua**  
Mechanical Engineering student

"I come from one of the most disadvantaged areas of my town and have lived on a council estate my entire life, raised by a single mother. She is my inspiration for everything, why I pick myself up after countless setbacks, and why I am determined to excel in everything I do. She helped me and my twin sister to reach university, something almost nobody in my family has done before.

During college, I knew I wanted to study Mechanical Engineering, and eventually work my way to the pinnacle of engineering in Formula One. My number one choice was the University of Liverpool, and I cried with happiness when I was accepted.

The University of Liverpool has helped me to gain confidence and independence, changed my outlook on life, and provided me with opportunities I would never have thought possible. I am in love with what I study. I achieved outstanding grades in my first year. And looking back at where I came from, I am extremely proud of how far I've come. I know that there are many more opportunities waiting for me, and with the University's help, I know I'll become the engineer, and the person, I have always aspired to be."

Discover more  
student stories.



# ORIGINAL THINKING, REAL WORLD IMPACT

As a Russell Group institution, research is central to everything we do. What this means for you is that your teaching will be informed and delivered by real experts who will challenge you to think beyond the textbook and apply your learning to the world around you. You'll graduate not only with a degree from a university ranked in the top 200 institutions worldwide, but with a range of multidisciplinary skills to ensure you stand out from the crowd.



**"Liverpool has a real focus on research and its application in the real world; with many teaching staff actively involved in ground-breaking research projects. This inspired me during my undergraduate study; I was able to undertake my own research project with support from my lecturers to gain hands-on experience and develop a range of critical skills. I enjoyed this so much that it influenced my decision to stay on at Liverpool and study for my PhD – something I never imagined I'd be doing when I originally applied for university!"**

Joel Levitan  
PhD student

## ORIGINAL IDEAS

**We produce research that makes headlines and people that make history.**

Our ideas, innovations and world-changing discoveries have helped us tackle major global challenges since 1881. Our strong civic roots and pioneering spirit combine to create impact that really matters. By working closely with partners across the globe, we are transforming the world around us for the better.

Through multidisciplinary research we are driving breakthroughs in a wide range of specialist areas, such as developing new materials to be used in industry and products we use in our daily lives, ramping up progress in the battle against infectious diseases, and reshaping what we know about our earliest ancestors and how they lived.

Our work is closely aligned with the UN's Sustainable Development Goals, ensuring that our research has a positive impact and helps protect our planet and everybody on it.

From discovering the world's oldest wooden structure in Zambia to conducting experiments in outer space, our researchers are original thinkers with real world impact.

Find out more about our fascinating research [liverpool.ac.uk/research](https://liverpool.ac.uk/research)



**LISTEN NOW:**

**Original Ideas is a new podcast from the University of Liverpool – highlighting our ground-breaking research and its real-world impact.**

# UNDERGRADUATE COURSES

With hundreds of options open to you, you're sure to find your perfect course at Liverpool. These pages show our courses at a glance. Check out our webpages for the full course information. If you're not sure what you want to study, a great place to start are our subject pages, where you can see the full range of our courses in one place.



[liverpool.ac.uk/courses/  
undergraduate](https://liverpool.ac.uk/courses/undergraduate)

# FULL COURSE LIST

**Please note:** the entry requirements listed are typical and correct at the time of going to press, **February 2025**. In addition to A level and BTEC we accept a wide range of other qualifications. For further details, including subject specific requirements and information about GCSEs, please check our website [liverpool.ac.uk/courses](https://liverpool.ac.uk/courses)

## Combined degrees

For information about **Combined degrees** and entry requirements when combining programmes, please see [liverpool.ac.uk/undergraduate/combined-degrees](https://liverpool.ac.uk/undergraduate/combined-degrees). Please note: if a programme with this symbol also has a UCAS course code, this is available as a single honours. For programmes only showing this symbol, this is only available as a 50% combination.

## Contextual admissions

We are committed to supporting under-represented groups to access higher education through our use of contextual data in admissions. This means that certain specified groups who may have experienced barriers to their education may be made an offer with up to a two grade reduction from our standard offer. **Please note** that some exceptions apply. Read the detail on our contextual admissions strategy [liverpool.ac.uk/undergraduate/applying/policies-and-statements/contextual-data](https://liverpool.ac.uk/undergraduate/applying/policies-and-statements/contextual-data) to find out more.

## Other qualifications

Many programmes will make an alternative offer to students with an EPQ alongside A levels. Other qualifications are accepted. Some courses will have subject specific requirements. For these and GCSE requirements, see [liverpool.ac.uk/courses](https://liverpool.ac.uk/courses)

## Admissions processes

Some programmes may invite applicants to interview, require a portfolio or completion of a test. See [liverpool.ac.uk/courses](https://liverpool.ac.uk/courses) for more information.

## Foundation programmes and Access routes

We offer a number of Foundation programmes in the areas of science, engineering and health and life sciences. See programme listings below for details. In addition, the University's Go Higher Access Diploma offers a pathway for students without formal qualifications to gain entry to various degree programmes across the arts, humanities and social sciences at the University of Liverpool and elsewhere. See page 67 for details.

## Global Opportunities

The majority of our subject areas offer a range of Global Opportunities. See pages 38–39 for information.



**Detailed entry requirements and course content.**

**i** Courses have subject specific requirements.

See [liverpool.ac.uk/courses](https://liverpool.ac.uk/courses)

**P** Some courses in this subject area may offer placements in industry

**+** Accredited courses are available in this subject area

**●** Combined degrees options available in this subject.

See [liverpool.ac.uk/undergraduate/combined-degrees](https://liverpool.ac.uk/undergraduate/combined-degrees)

Course name	UCAS code	A level	BTEC Level 3 National Extended Diploma
<b>Accounting, Finance and Economics</b> <b>P+</b>			
Accounting and Finance BA (Hons)	N400	AAB	D*D*D in relevant diploma
Accounting and Finance with a Year in Industry BA (Hons)	N401	AAB	D*D*D in relevant diploma
Business Economics BA (Hons)	LN11	AAB	D*D*D in relevant diploma plus B at A level
Business Economics with a Year in Industry BA (Hons)	LN12	AAB	D*D*D in relevant diploma plus B at A level
Economics BSc (Hons) <b>● i</b>	LI00	AAB	D*D*D plus A in Maths A level
Economics with a Year in Industry BSc (Hons) <b>● i</b>	LI01	AAB	D*D*D plus A in Maths A level
Finance and Data Analytics BSc (Hons)	N312	AAB	D*D*D in relevant diploma
Finance and Data Analytics with a Year in Industry BSc (Hons)	N314	AAB	D*D*D in relevant diploma
Financial Computing BSc (Hons) <b>i</b>	GN34	AAA	Applications considered
Financial Computing with a Year in Industry BSc (Hons) <b>i</b>	G3N4	AAA	Applications considered
Mathematics and Economics BSc (Hons) <b>i</b>	GL11	ABB	Applications considered
Mathematics with Finance BSc (Hons) <b>i</b>	GIN3	AAB	Applications considered
Philosophy, Politics and Economics BA (Hons) <b>i</b>	LOV0	AAB	Applications encouraged
Philosophy, Politics and Economics with a Year in Industry BA (Hons) <b>i</b>	LOV1	AAB	Applications encouraged
<b>i</b> Courses have subject specific requirements. See <a href="https://liverpool.ac.uk/courses">liverpool.ac.uk/courses</a>			
<b>Aerospace Engineering</b> <b>P+</b>			
Aerospace Engineering BEng (Hons) <b>i</b>	H425	AAB	Applications considered
Aerospace Engineering with a Year in Industry BEng (Hons) <b>i</b>	H426	AAB	Applications considered
Aerospace Engineering MEng <b>i</b>	H421	AAA	Applications considered
Aerospace Engineering with a Year in Industry MEng <b>i</b>	H422	AAA	Applications considered
Aerospace Engineering with Pilot Studies BEng (Hons) <b>i</b>	H401	AAB	Applications considered
Aerospace Engineering with Pilot Studies MEng <b>i</b>	H402	AAA	Applications considered
Aerospace Engineering with Pilot Studies with a Year in Industry BEng (Hons) <b>i</b>	H403	AAB	Applications considered
Aerospace Engineering with Pilot Studies with a Year in Industry MEng <b>i</b>	H404	AAA	Applications considered
Engineering Foundation BEng (Hons) (4-year route including a Foundation Year at Carmel College) <b>i</b>	H109	CDD	Applications considered
<b>i</b> Courses (other than Foundation programme) require Maths and a second science. Maths A level is also required alongside BTEC Level 3 National Extended Diploma. See <a href="https://liverpool.ac.uk/courses">liverpool.ac.uk/courses</a>			
<b>Archaeology, Classics and Egyptology</b>			
Ancient History BA (Hons) <b>●</b>	V110	BBB	Applications encouraged
Archaeology BA (Hons) <b>●</b>	V400	BBB	Applications encouraged
Archaeology BSc (Hons)	V402	BBB	Applications encouraged
Archaeology of Ancient Civilisations BA (Hons)	V401	BBB	Applications encouraged
Classics BA (Hons) <b>●</b>	Q800	BBB	Applications encouraged
Classical Studies BA (Hons) <b>●</b>	Q810	BBB	Applications encouraged
Egyptology BA (Hons) <b>●</b>	V410	BBB	Applications encouraged
Evolutionary Anthropology BSc (Hons)	V4B1	BBB	Applications encouraged

Course name	UCAS code	A level	BTEC Level 3 National Extended Diploma
<b>Architecture, Building and Planning</b>			
Architecture Design Studies BA (Hons)	K10D	ABB	DDD
Architectural Engineering BEng (Hons)	HK26	AAB	Applications considered
Architectural Engineering MEng	HK28	AAA	Applications considered
Architecture BA (Hons)	K100	AAA	DDD
Architecture MArch	N/A	*	
Environment and Planning BA (Hons)	K4L7	BBB	DDD in relevant diploma
Geography and Planning BA (Hons)	L7K4	ABB	D*DD in relevant diploma
Town and Regional Planning MPlan	K400	ABB	D*DD in relevant diploma
Urban Planning BA (Hons)	K430	BBB	DDD in relevant diploma

**\* Requires 2:1 BA/BSc Architecture**

Courses may have subject specific requirements. For Engineering courses, Maths A level is also required alongside BTEC Level 3 National Extended Diploma. See [liverpool.ac.uk/courses](https://liverpool.ac.uk/courses)

**Biological and Biomedical Sciences**

Anatomy and Human Biology BSc (Hons)	B110	AAB	D*DD in relevant diploma
Anatomy and Human Biology MBiol	B113	AAB	D*D*D in relevant diploma
Biochemistry BSc (Hons)	C700	ABB	D*DD in relevant diploma
Biochemistry MBiol	C703	ABB	D*DD in relevant diploma
Biological Sciences BSc (Hons)	C100	ABB	D*DD in relevant diploma
Biological Sciences MBiol	C103	ABB	D*DD in relevant diploma
Biological Sciences leading to BSc (Hons) (4-year route with a Foundation Year at Carmel College leading to any of the BSc programmes above)	C108	CCC-CDD	Applications considered
Biomedical Sciences BSc (Hons)	C130	ABB	D*DD in relevant diploma
Biomedical Sciences MBiol	C133	ABB	D*DD in relevant diploma
Bioveternary Science BSc (Hons)	D900	ABB	D*DD in relevant diploma
Bioveternary Science MBiol	D903	ABB	D*DD in relevant diploma
Marine Biology BSc (Hons)	C160	ABB	D*DD in relevant diploma
Marine Biology with Oceanography BSc (Hons)	C1F7	ABB	D*DD in relevant diploma
Microbiology and Infection BSc (Hons)	C500	ABB	D*DD in relevant diploma
Microbiology and Infection MBiol	C503	ABB	D*DD in relevant diploma
Pharmacology BSc (Hons)	B210	AAB	D*DD in relevant diploma
Pharmacology MBiol	B213	AAB	D*D*D in relevant diploma
Zoology BSc (Hons)	C300	ABB	D*DD in relevant diploma
Zoology MBiol	C303	AAB	D*D*D in relevant diploma

Courses have subject specific requirements. See [liverpool.ac.uk/courses](https://liverpool.ac.uk/courses)

Courses have subject specific requirements. See [liverpool.ac.uk/courses](https://liverpool.ac.uk/courses)

Some courses in this subject area may offer placements in industry

Accredited courses are available in this subject area

Combined degrees options available in this subject. See [liverpool.ac.uk/undergraduate/combined-degrees](https://liverpool.ac.uk/undergraduate/combined-degrees)



**Detailed entry requirements and course content.**

Course name	UCAS code	A level	BTEC Level 3 National Extended Diploma
<b>Business Management and Marketing</b>			
Business			
Business Management BA (Hons)	N100	AAB	D*D*D in relevant diploma
Business Management with a Year in Industry BA (Hons)	N101	AAB	D*D*D in relevant diploma
Finance and Data Analytics BSc (Hons)	N312	AAB	D*D*D in relevant diploma
Finance Data Analytics with a Year in Industry BSc (Hons)	N314	AAB	D*D*D in relevant diploma
International Management BA (Hons)	N120	AAB	D*D*D in relevant diploma
International Management with a Year in Industry BA (Hons)	N121	AAB	D*D*D in relevant diploma
Law with Business LLB (Hons)	T923	AAA	D*D*D* in relevant diploma
Marketing BA (Hons)	N500	AAB	D*D*D in relevant diploma
Marketing with a Year in Industry BA (Hons)	N501	AAB	D*D*D in relevant diploma
Politics and International Business BA (Joint Hons)	LN21	AAB	Applications encouraged

Courses have subject specific requirements. See [liverpool.ac.uk/courses](https://liverpool.ac.uk/courses)

**Chemistry**

Biochemistry BSc (Hons)	C700	ABB	D*DD in relevant diploma
Biochemistry MBiol	C703	AAB	D*D*D in relevant diploma
Chemical Sciences BSc (Hons) (4-year route including a Foundation Year at Carmel College)	F108	CDD	Applications considered
Chemistry BSc (Hons)	F100	ABB	D*DD in relevant diploma
Chemistry with a Year Abroad BSc (Hons)	F001	ABB	D*DD in relevant diploma
Chemistry MChem	F102	ABB	D*DD in relevant diploma
Chemistry with a Year Abroad MChem	F002	ABB	D*DD in relevant diploma
Chemistry with a Year in Industry BSc (Hons)	F111	ABB	D*DD in relevant diploma
Chemistry with Research in Industry MChem	F161	ABB	D*DD in relevant diploma
Medicinal Chemistry BSc (Hons)	F1B2	ABB	D*DD in relevant diploma
Medicinal Chemistry with a Year Abroad BSc (Hons)	F12B	ABB	D*DD in relevant diploma
Medicinal Chemistry with a Year in Industry BSc (Hons)	F1B3	ABB	D*DD in relevant diploma
Medicinal Chemistry with Pharmacology MChem	F1BF	ABB	D*DD in relevant diploma
Medicinal Chemistry with Pharmacology with a Year Abroad MChem	F1B1	ABB	D*DD in relevant diploma

Courses have subject specific requirements. See [liverpool.ac.uk/courses](https://liverpool.ac.uk/courses)

**Communication and Media**

Communication and Media BA (Hons)	P900	ABB	Applications encouraged
Communication and Media with Game Design Studies BA (Hons)	I611	ABB	Applications encouraged
Media and Culture BA (Hons)	P3T9	ABB	Applications encouraged
Media, Data and Society BA (Hons)	P3L9	ABB	Applications encouraged
Screen Industries and Entertainment BA (Hons)	W2J9	ABB	Applications encouraged

Course name	UCAS code	A level	BTEC Level 3 National Extended Diploma
<b>Computer Science</b>			
Computer Science BSc (Hons)	G400	AAA	Applications considered
Computer Science with a Year in Industry BSc (Hons)	G403	AAA	Applications considered
Computer Science BSc (Hons) (4-year route with a Foundation Year at Carmel College)	G408	CDD	Applications considered
Computer Science MEng	G401	AAA	Applications considered
Computer Science with a Year in Industry MEng	G404	AAA	Applications considered
Computer Science and Electronic Engineering BEng (Hons)	HH66	ABB	Applications considered
Computer Science and Electronic Engineering with a Year in Industry BEng (Hons)	HG6L	ABB	Applications considered
Computer Science and Electronic Engineering MEng	GHK6	ABB	Applications considered
Computer Science with Software Development BSc (Hons)	G610	AAA	Applications considered
Computer Science with Software Development and a Year in Industry BSc (Hons)	G611	AAA	Applications considered
Financial Computing BSc (Hons)	GN34	AAA	Applications considered
Financial Computing with a Year in Industry BSc (Hons)	G3N4	AAA	Applications considered
Game Design BA (Hons)	I610	ABB	Applications encouraged
Mathematics and Computer Science BSc (Hons)	GG14	AAA	Applications considered
Mathematics and Computer Science with a Year in Industry BSc (Hons)	GG16	AAA	Applications considered

Courses have subject specific requirements. See [liverpool.ac.uk/courses](https://liverpool.ac.uk/courses)

### Dentistry

Bachelor of Dental Surgery BDS	A200	AAA	Not accepted
Dental Therapy BSc (Hons)	B750	ABB	Not accepted
Foundation to Human and Animal Health Professions (Dentistry)	0AAW	*	
Foundation to Human and Animal Health Professions (Dental Therapy)	BAAW	*	

\*See [liverpool.ac.uk/courses](https://liverpool.ac.uk/courses)

Courses have subject specific requirements. See [liverpool.ac.uk/courses](https://liverpool.ac.uk/courses)

### Earth Sciences

Earth Sciences entry route BSc (Hons) (4-year route with a Foundation Year at Carmel College)	F608	CDD	Applications considered
Environmental Geoscience BSc (Hons)	F7F6	ABB	D*DD in relevant diploma
Geology BSc (Hons)	F600	ABB	D*DD in relevant diploma
Geology with Physical Geography BSc (Hons)	F6F8	ABB	D*DD in relevant diploma

Courses have subject specific requirements. See [liverpool.ac.uk/courses](https://liverpool.ac.uk/courses)

Courses have subject specific requirements.

See [liverpool.ac.uk/courses](https://liverpool.ac.uk/courses)

Some courses in this subject area may offer placements in industry

Accredited courses are available in this subject area

Combined degrees options available in this subject.

See [liverpool.ac.uk/undergraduate/combined-degrees](https://liverpool.ac.uk/undergraduate/combined-degrees)



Detailed entry requirements and course content.

Course name	UCAS code	A level	BTEC Level 3 National Extended Diploma
<b>Electrical and Electronic Engineering</b>			
Computer Science and Electronic Engineering BEng (Hons)	HH66	ABB	Applications considered
Computer Science and Electronic Engineering MEng	GHK6	ABB	Applications considered
Computer Science and Electronic Engineering with a Year in Industry BEng (Hons)	HG6L	ABB	Applications considered
Electrical and Electronic Engineering BEng (Hons)	H603	ABB	Applications considered
Electrical and Electronic Engineering with a Year Abroad BEng (Hons)	H611	ABB	Applications considered
Electrical and Electronic Engineering MEng	H606	ABB	Applications considered
Electrical and Electronic Engineering with a Year Abroad MEng	H615	ABB	Applications considered
Electrical and Electronic Engineering with a Year in Industry BEng (Hons)	H605	ABB	Applications considered
Electrical and Electronic Engineering with a Year in Industry MEng	H607	ABB	Applications considered
Engineering Foundation BEng (Hons) (4-year route including a Foundation Year at Carmel College)	H109	CDD	Applications considered
Mechatronics and Robotic Systems BEng (Hons)	HH67	ABB	Applications considered
Mechatronics and Robotic Systems with a Year Abroad BEng (Hons)	HH68	ABB	Applications considered
Mechatronics and Robotic Systems MEng	HH76	ABB	Applications considered
Mechatronics and Robotic Systems with a Year Abroad MEng	HH77	ABB	Applications considered
Mechatronics and Robotic Systems with a Year in Industry BEng (Hons)	HHP7	ABB	Applications considered
Mechatronics and Robotic Systems with a Year in Industry MEng	HHR6	ABB	Applications considered
Courses (other than Foundation programme) require Maths and a second science. Maths A level is also required alongside BTEC Level 3 National Extended Diploma for some programmes. See <a href="https://liverpool.ac.uk/courses">liverpool.ac.uk/courses</a>			
<b>Engineering</b>			
Architectural Engineering BEng (Hons)	HK26	AAB	Applications considered
Architectural Engineering MEng	HK28	AAB	Applications considered
Civil and Structural Engineering MEng	H220	AAA	Applications considered
Civil Engineering BEng (Hons)	H200	AAB	Applications considered
Civil Engineering with a Year in Industry BEng (Hons)	H203	AAB	Applications considered
Civil Engineering MEng	H202	AAB	Applications considered
Civil Engineering with a Year in Industry MEng	H204	AAB	Applications considered
Engineering BEng (Hons)	H100	AAB	Applications considered
Engineering MEng	H101	AAB	Applications considered
Engineering Foundation BEng (Hons) (4-year route including a Foundation Year at Carmel College)	H109	CDD	Applications considered
Product Design Engineering BEng (Hons)	HW24	ABB	Applications considered



Course name	UCAS code	A level	BTEC Level 3 National Extended Diploma
<b>Engineering (Continued)</b> <span style="color: red;">P</span> <span style="color: green;">+</span>			
Product Design Engineering with a Year in Industry BEng (Hons) <span style="color: blue;">i</span>	HW26	ABB	Applications considered

i Courses (other than Foundation programme) require Maths A level. Additional subject specific requirements may apply. Maths A level is also required alongside BTEC Level 3 National Extended Diploma. See [liverpool.ac.uk/courses](https://liverpool.ac.uk/courses)

See also [Aerospace Engineering \(page 53\)](#) and [Mechanical Engineering \(page 63\)](#).

### English P

English BA (Hons) <span style="color: red;">P</span> <span style="color: blue;">i</span>	Q300	ABB	Applications considered
English Language BA (Hons) <span style="color: red;">P</span> <span style="color: blue;">i</span>	Q310	ABB	Applications considered
English Literature BA (Hons) <span style="color: red;">P</span> <span style="color: blue;">i</span>	Q320	ABB	Applications considered
English Literature with Drama Studies BA (Hons) <span style="color: blue;">i</span>	Q3W4	ABB	Applications considered
English with World Literature BA (Hons) <span style="color: blue;">i</span>	Q3V2	ABB	Applications considered

i Courses require English at grade A. See [liverpool.ac.uk/courses](https://liverpool.ac.uk/courses)



**Detailed entry requirements and course content.**

i Courses have subject specific requirements. See [liverpool.ac.uk/courses](https://liverpool.ac.uk/courses)

P Some courses in this subject area may offer placements in industry

+ Accredited courses are available in this subject area

P Combined degrees options available in this subject. See [liverpool.ac.uk/undergraduate/combined-degrees](https://liverpool.ac.uk/undergraduate/combined-degrees)

Course name	UCAS code	A level	BTEC Level 3 National Extended Diploma
<b>Environmental Sciences</b> <span style="color: green;">+</span>			

Biological Sciences leading to BSc (Hons) (4-year route with a Foundation Year at Carmel College) <span style="color: blue;">i</span>	C108	CDD	Applications considered
Climate Science BSc (Hons) <span style="color: blue;">i</span>	F764	ABB	D*DD in relevant diploma
Earth Sciences entry route BSc (Hons) (4-year route including a Foundation Year at Carmel College) <span style="color: blue;">i</span>	F608	CDD	Applications considered
Environment and Planning BA (Hons)	K4L7	BBB	DDD in relevant diploma
Environmental Geoscience BSc (Hons) <span style="color: blue;">i</span>	F7F6	ABB	D*DD in relevant diploma
Environmental Science BSc (Hons) <span style="color: blue;">i</span>	F750	ABB	D*DD in relevant diploma
Geography BA (Hons) <span style="color: blue;">i</span>	L700	ABB	D*DD in relevant diploma
Geography BSc (Hons) <span style="color: blue;">i</span>	F800	ABB	D*DD in relevant diploma
Geography BSc (Hons) (4-year route with Foundation Year at Carmel College) <span style="color: blue;">i</span>	F808	CDD	Applications considered
Geography and Oceanography BSc (Hons) <span style="color: blue;">i</span>	FF78	ABB	D*DD in relevant diploma
Geography and Planning BA (Hons)	L7K4	ABB	D*DD in relevant diploma
Geology BSc (Hons) <span style="color: blue;">i</span>	F600	ABB	D*DD in relevant diploma
Geology with Physical Geography BSc (Hons) <span style="color: blue;">i</span>	F6F8	ABB	D*DD in relevant diploma
Marine Biology BSc (Hons) <span style="color: blue;">i</span>	C160	ABB	D*DD in relevant diploma
Marine Biology with Oceanography BSc (Hons) <span style="color: blue;">i</span>	C1F7	ABB	D*DD in relevant diploma
Mathematics with Ocean and Climate Sciences BSc (Hons) <span style="color: blue;">i</span>	G1F7	ABB	Applications considered
Ocean Sciences BSc (Hons) <span style="color: blue;">i</span>	F700	ABB	D*DD in relevant diploma

i Courses have subject specific requirements. See [liverpool.ac.uk/courses](https://liverpool.ac.uk/courses)

### Film Studies

Film Studies BA (Hons) <span style="color: red;">P</span>	P303	ABB	Applications encouraged
---	------	-----	-------------------------



Course name	UCAS code	A level	BTEC Level 3 National Extended Diploma
<b>Game Design</b>			
Communication and Media and Game Design Studies BA (Hons)	I619	ABB	Applications encouraged
Game Design BSc (Hons)	I610	ABB	Applications encouraged
<b>Geography</b>			
Environment and Planning BA (Hons)	K4L7	BBB	DDD in relevant diploma
Environmental Science BSc (Hons)	F750	ABB	D*DD in relevant diploma
Geography and Oceanography BSc (Hons)	FF78	ABB	D*DD in relevant diploma
Geography and Planning BA (Hons)	L7K4	ABB	D*DD in relevant diploma
Geography BA (Hons)	L700	ABB	D*DD in relevant diploma
Geography BSc (Hons)	F800	ABB	D*DD in relevant diploma
Geography BSc (Hons) (4-year route with Foundation Year at Carmel College)	F808	CDD	Applications considered
Geology with Physical Geography BSc (Hons)	F6F8	ABB	D*DD in relevant diploma
Town and Regional Planning MPlan	K400	ABB	D*DD in relevant diploma
Urban Planning BA (Hons)	K430	BBB	DDD in relevant diploma

Courses have subject specific requirements. See [liverpool.ac.uk/courses](https://liverpool.ac.uk/courses)



**Detailed entry requirements and course content.**

Courses have subject specific requirements. See [liverpool.ac.uk/courses](https://liverpool.ac.uk/courses)

Some courses in this subject area may offer placements in industry

Accredited courses are available in this subject area

Combined degrees options available in this subject. See [liverpool.ac.uk/undergraduate/combined-degrees](https://liverpool.ac.uk/undergraduate/combined-degrees)

Course name	UCAS code	A level	BTEC Level 3 National Extended Diploma
-------------	-----------	---------	--

### Health Sciences and Allied Health Professions

Diagnostic Radiography BSc (Hons)	B82I	BBB	Applications considered
Foundation to Human and Animal Health Professions (Diagnostic Radiography)	4ASC	*	
Foundation to Human and Animal Health Professions (Nursing)	Y4AS	*	
Foundation to Human and Animal Health Professions (Occupational Therapy)	47OH	*	
Foundation to Human and Animal Health Professions (Orthoptics)	P0HG	*	
Foundation to Human and Animal Health Professions (Physiotherapy)	4RAD	*	
Foundation to Human and Animal Health Professions (Therapeutic Radiotherapy and Oncology)	0W2I	*	
Nursing BN (Hons)	B700	BBC	Applications considered
Occupational Therapy BSc (Hons)	B920	BBB	Applications considered
Orthoptics BSc (Hons)	B520	BBB	Applications considered
Physiotherapy BSc (Hons)	B160	AAB	Applications considered
Therapeutic Radiography and Oncology BSc (Hons)	B822	BBB	Applications considered

\*See [liverpool.ac.uk/courses](https://liverpool.ac.uk/courses)

Courses have subject specific requirements. See [liverpool.ac.uk/courses](https://liverpool.ac.uk/courses)

### History

Ancient History BA (Hons)	V110	BBB	Applications encouraged
History BA (Hons)	V100	ABB	Applications encouraged

### Irish Studies

Irish Studies BA (Hons)	Q540	BBB	Applications encouraged
-------------------------	------	-----	-------------------------



Course name	UCAS code	A level	BTEC Level 3 National Extended Diploma
<b>Languages and Cultures</b>			
Catalan			
Chinese Studies			
French BA (Hons)	R120	BBB	Applications encouraged
German BA (Hons)	R220	BBB	Applications encouraged
Hispanic Studies BA (Hons)	RR45	BBB	Applications encouraged
Italian BA (Hons)	R300	BBB	Applications encouraged
Mathematics with Languages BSc (Hons)	G19R	ABB	Applications considered
Modern Languages Triple Subject BA (Hons)	T900	ABB	Applications encouraged
Portuguese			
Spanish			

Courses have subject specific requirements. See [liverpool.ac.uk/courses](https://liverpool.ac.uk/courses)

### Law

Law LLB (Hons)	M100	AAA	D*D*D* in relevant diploma
Law with a Year Abroad LLB (Hons)	M111	AAA	D*D*D* in relevant diploma
Law with Business LLB (Hons)	T923	AAA	D*D*D* in relevant diploma
Law with Criminology LLB (Hons)	T928	AAA	D*D*D* in relevant diploma
Law with Philosophy LLB (Hons)	T944	AAA	D*D*D* in relevant diploma
Law with Politics LLB (Hons)	T945	AAA	D*D*D* in relevant diploma

\* This Law degree takes students through the academic stage of the route to practice.

### Mathematics

Actuarial Mathematics BSc (Hons)	NG31	AAB	Applications considered
Actuarial Mathematics with a Year Abroad BSc (Hons)	NG30	AAB	Applications considered
Mathematical Physics MMath	FGH1	AAB	Applications considered
Mathematical Physics with a Year Abroad MMath	FGH2	AAB	Applications considered
Mathematical Sciences entry route leading to BSc (Hons) (4-year route with Foundation Year at Carmel College)	G108	CDD	Applications considered
Mathematics BSc (Hons)	G100	ABB	Applications considered
Mathematics with a Year Abroad BSc (Hons)	G001	ABB	Applications considered
Mathematics MMath	G101	AAB	Applications considered
Mathematics and Computer Science BSc (Hons)	GG14	AAA	Applications considered
Mathematics and Computer Science with a Year in Industry BSc (Hons)	GG16	AAA	Applications considered
Mathematics and Economics BSc (Hons)	GL11	ABB	Applications considered
Mathematics and Music Technology BSc (Hons)	GIW3	ABB	Applications considered

Courses have subject specific requirements. See [liverpool.ac.uk/courses](https://liverpool.ac.uk/courses)

Some courses in this subject area may offer placements in industry

Accredited courses are available in this subject area

Combined degrees options available in this subject. See [liverpool.ac.uk/undergraduate/combined-degrees](https://liverpool.ac.uk/undergraduate/combined-degrees)



**Detailed entry requirements and course content.**

Course name	UCAS code	A level	BTEC Level 3 National Extended Diploma
Mathematics and Philosophy BA (Joint Hons)	GV15	ABB	Applications encouraged
Mathematics and Statistics BSc (Hons)	GG13	ABB	Applications considered
Mathematics and Statistics with a Year Abroad BSc (Hons)	GG03	ABB	Applications considered
Mathematics with Finance BSc (Hons)	GIN3	AAB	Applications considered
Mathematics with Finance with a Year Abroad BSc (Hons)	GIN4	AAB	Applications considered
Mathematics with Languages BSc (Hons)	G19R	ABB	Applications considered
Mathematics with Ocean and Climate Sciences BSc (Hons)	G1F7	ABB	Applications considered
Physics and Mathematics BSc (Joint Hons)	FG31	ABB	Applications considered
Theoretical Physics MPhys	F344	ABB	Applications considered
Theoretical Physics with a Year Abroad MPhys	F345	ABB	Applications considered

Courses (other than Foundation programme) require Maths A level grade A. Additional subject specific requirements may apply. See [liverpool.ac.uk/courses](https://liverpool.ac.uk/courses)

### Mechanical Engineering

See also Mechatronics programmes under Electrical Engineering and Electronics

Engineering Foundation BEng (Hons) (4-year route including a Foundation Year at Carmel College)	H109	CDD	Applications considered
Mechanical Engineering BEng (Hons)	H300	AAB	Applications considered
Mechanical Engineering with a Year in Industry BEng (Hons)	H302	AAB	Applications considered
Mechanical Engineering MEng	H301	AAB	Applications considered
Mechanical Engineering with a Year in Industry MEng (Hons)	H303	AAB	Applications considered

Courses (other than Foundation programme) require Maths and a second science. Maths A level is also required alongside BTEC Level 3 National Extended Diploma. See [liverpool.ac.uk/courses](https://liverpool.ac.uk/courses)

### Medicine

Foundation to Human and Animal Health Professions (Medicine)	789S	*	
Medicine and Surgery MBChB	A100	AAA	Not accepted in lieu of A levels
Medicine and Surgery MBChB (Accelerated)	A101		Graduate entry programme. Minimum 2:1 Honours degree in any degree subject (or a predicted upper second class degree or above if you are on or about to enter the final year of your degree programme).

\*See [liverpool.ac.uk/courses](https://liverpool.ac.uk/courses)

Courses have subject specific requirements. See [liverpool.ac.uk/courses](https://liverpool.ac.uk/courses)

At the time of going to print, the School of Medicine's A101 courses is scheduled to re-open in August 2025. You can check the status of this at [liverpool.ac.uk/medicine/study-with-us/undergraduate/admissions-information/](https://liverpool.ac.uk/medicine/study-with-us/undergraduate/admissions-information/)

Course name	UCAS code	A level	BTEC Level 3 National Extended Diploma
<b>Music</b> <span style="color: red;">P</span>			
Mathematics and Music Technology BSc (Hons) <span style="color: blue;">i</span>	GIW3	ABB	D*DD in relevant diploma
Music and Popular Music BA (Hons) <span style="color: blue;">i</span>	W301	ABB	Applications encouraged
Music and Technology BA (Hons) <span style="color: red;">P</span> <span style="color: blue;">i</span>	W370	ABB	Applications encouraged
Music BA (Hons) <span style="color: red;">P</span> <span style="color: blue;">i</span>	W300	ABB	Applications encouraged
Popular Music BA (Hons) <span style="color: red;">P</span> <span style="color: blue;">i</span>	W340	ABB	Applications encouraged

i Courses have subject specific requirements. See [liverpool.ac.uk/courses](https://liverpool.ac.uk/courses)

### Philosophy P

Law with Philosophy LLB (Hons)	T944	AAA	D*D*D* in relevant diploma
Mathematics and Philosophy BA (Joint Hons) <span style="color: blue;">i</span>	GV15	ABB	Applications encouraged
Philosophy BA (Hons) <span style="color: red;">P</span>	V500	AAB	Applications encouraged
Philosophy, Politics and Economics BA (Hons) <span style="color: blue;">i</span>	L0V0	AAB	Applications encouraged
Philosophy, Politics and Economics with a Year in Industry BA (Hons) <span style="color: blue;">i</span>	L0V1	AAB	Applications encouraged

i Courses have subject specific requirements. See [liverpool.ac.uk/courses](https://liverpool.ac.uk/courses)

### Physics P +

Astrophysics MPhys <span style="color: blue;">i</span>	F521	AAB	Applications considered
Astrophysics with a Year Abroad MPhys <span style="color: blue;">i</span>	F522	AAB	Applications considered
Mathematical Physics MMath <span style="color: blue;">i</span>	FGH1	AAB	Applications considered
Physical Sciences entry route leading to BSc (Hons) (4-year route including a Foundation Year at Carmel College) <span style="color: blue;">i</span>	F308	CDD	Applications considered
Physics BSc (Hons) <span style="color: blue;">i</span>	F300	ABB	Applications considered
Physics with a Year Abroad BSc (Hons) <span style="color: blue;">i</span>	F333	ABB	Applications considered
Physics MPhys <span style="color: blue;">i</span>	F303	AAB	Applications considered
Physics with a Year Abroad MPhys <span style="color: blue;">i</span>	F309	AAB	Applications considered
Physics and Astronomy BSc (Hons) <span style="color: blue;">i</span>	F3F5	ABB	Applications considered
Physics with Astronomy with a Year Abroad BSc (Hons) <span style="color: blue;">i</span>	F3F6	ABB	Applications considered
Physics with Mathematics BSc (Joint Hons) <span style="color: blue;">i</span>	FG31	ABB	D*DD in relevant diploma
Physics and Medical Applications BSc (Hons) <span style="color: blue;">i</span>	F350	ABB	Applications considered
Physics with Medical Applications with a Year Abroad BSc (Hons) <span style="color: blue;">i</span>	F353	ABB	Applications considered
Physics and Nuclear Science BSc (Hons) <span style="color: blue;">i</span>	F390	ABB	Applications considered
Physics with Nuclear Science with a Year Abroad BSc (Hons) <span style="color: blue;">i</span>	F391	ABB	Applications considered
Theoretical Physics MPhys <span style="color: blue;">i</span>	F344	AAB	Applications considered

i Courses (other than Foundation programme) require Maths and Physics. See [liverpool.ac.uk/courses](https://liverpool.ac.uk/courses)

i Courses have subject specific requirements. See [liverpool.ac.uk/courses](https://liverpool.ac.uk/courses)

P Some courses in this subject area may offer placements in industry

+ Accredited courses are available in this subject area

P Combined degrees options available in this subject. See [liverpool.ac.uk/undergraduate/combined-degrees](https://liverpool.ac.uk/undergraduate/combined-degrees)



**Detailed entry requirements and course content.**

Course name	UCAS code	A level	BTEC Level 3 National Extended Diploma
<b>Politics</b> <span style="color: red;">P</span>			
International Relations BA (Hons) <span style="color: red;">P</span> <span style="color: blue;">i</span>	L240	ABB	Applications encouraged
Law with Politics LLB (Hons)	T945	AAA	D*D*D* in relevant diploma
Philosophy, Politics and Economics BA (Hons) <span style="color: blue;">i</span>	L0V0	AAB	Applications encouraged
Philosophy, Politics and Economics with a Year in Industry BA (Hons) <span style="color: blue;">i</span>	L0V1	AAB	Applications encouraged
Politics BA (Hons) <span style="color: red;">P</span>	L210	ABB	Applications encouraged

i Programmes may have subject specific requirements. See [liverpool.ac.uk/courses](https://liverpool.ac.uk/courses)

### Psychology +

Psychology BSc (Hons) <span style="color: blue;">i</span>	C800	ABB	DDD in relevant diploma
Psychology BSc (Hons) (2+2 with foundation element) <span style="color: blue;">i</span>	C801	*	

\*Flexible entry requirements. For further information, visit [wmc.ac.uk](https://wmc.ac.uk)

i Courses (other than Foundation programme) require at least one science A level. See [liverpool.ac.uk/courses](https://liverpool.ac.uk/courses)

### Sociology, Social Policy and Criminology

Criminology BA (Hons) <span style="color: red;">P</span>	L311	BBB	Applications encouraged
Criminology with Sociology BA (Hons)	T958	BBB	Applications encouraged
Criminology with Social Policy BA (Hons)	T957	BBB	Applications encouraged
Law with Criminology LLB (Hons)	T928	BBB	D*D*D* in relevant diploma
Social Policy <span style="color: red;">P</span>			
Sociology BA (Hons) <span style="color: red;">P</span>	L302	BBB	Applications encouraged
Sociology with Criminology BA (Hons)	T809	BBB	Applications encouraged
Sociology with Social Policy BA (Hons)	T828	BBB	Applications encouraged

### Veterinary Science

Bioveterinary Science BSc (Hons) <span style="color: blue;">i</span>	D900	ABB	D*DD in relevant diploma
Bioveterinary Science MBiol <span style="color: blue;">i</span>	D903	AAB	D*D*D in relevant diploma
Foundation to Human and Animal Health Professions (Veterinary Science) <span style="color: blue;">i</span>	74JJ	*	
Veterinary Science BVSc <span style="color: blue;">i</span>	D100	AAA	Not accepted

\*See [liverpool.ac.uk/courses](https://liverpool.ac.uk/courses)

i Courses have subject specific requirements.

See [liverpool.ac.uk/veterinary-science/undergraduate/prospective-applicants](https://liverpool.ac.uk/veterinary-science/undergraduate/prospective-applicants)



# YOUR APPLICATION

We welcome applications from all over the world, and it's our aim to make the process of applying as smooth as possible.

## Making your application

Applications for full-time undergraduate study should be made via UCAS on their online application system at [ucas.com](https://ucas.com) using code **LVRPL L41**.

The UCAS deadline for non-clinical programmes is 14 January 2026 (for international students the deadline is normally the end of June). Please note that these dates may be subject to change, so applicants should check the UCAS website for the most up to date information.

## Applications for Medicine, Dentistry and Veterinary Science

The current UCAS deadline for applications for Medicine, Dentistry and Veterinary Science is 15 October in the year before you wish to begin university. However, please note that UCAS deadlines may be subject to review so you should check the UCAS website for details. You may apply to up to four choices for Medicine, Dentistry or Veterinary Science and you may use your fifth choice for an alternative programme without prejudice to your application for Medicine, Dentistry or Veterinary Science.

## Year in China/Year Abroad applications

If you are planning to study with a Year in China or Year Abroad please refer to the application guidelines here [liverpool.ac.uk/global-opportunities](https://liverpool.ac.uk/global-opportunities)

## How your application is assessed

Full information on the way in which we will assess your application is available on our website at [liverpool.ac.uk/ug-admissions](https://liverpool.ac.uk/ug-admissions)

We have an Undergraduate Admissions Policy which sets out the general principles we follow, when making decisions. The policy document may be found online at [liverpool.ac.uk/undergraduate/applying/policies-and-statements/](https://liverpool.ac.uk/undergraduate/applying/policies-and-statements/)

## Entry requirements

For full details on the programmes we offer and detailed entrance requirements, visit [liverpool.ac.uk/undergraduate](https://liverpool.ac.uk/undergraduate)

For information on English language entry requirements contact the Enquiries team **E: [ugrecruitment@liverpool.ac.uk](mailto:ugrecruitment@liverpool.ac.uk)**

Further information about acceptable international qualifications can be found at [liverpool.ac.uk/international](https://liverpool.ac.uk/international)

## Disabled students

We give equal consideration to all applicants and welcome applications from students with disabilities. Please contact the Disability Support team on **T: +44 (0)151 794 4714** to discuss your support needs before you submit your UCAS application.

## Preparatory programmes partner colleges

For some programmes with foundation elements, you will study the first part at a partner college. Such programmes are listed in the programme listing of this prospectus (see pages 52-65).

## Go Higher

The University offers the 'Go Higher' programme as a route into Higher Education for people who are not applying directly from school or college, and who do not have traditional entry qualifications. Go Higher develops your academic skills, provides a broad foundation for your successful transition to university and enables you to apply for a diverse range of degrees in Humanities. [liverpool.ac.uk/gohigher](https://liverpool.ac.uk/gohigher)

## Applicants who have been in the care of a UK Local Authority

The University is keen to support applicants who are, or who have been, in the care of a UK Local Authority, and a member of our support services team is available to offer advice to applicants who have indicated on the UCAS form that they are or have been in care. For further details, contact Ben Toleman **E: [btoleman@liverpool.ac.uk](mailto:btoleman@liverpool.ac.uk)**

## Mature students

We welcome applications from candidates who are not applying directly from school or college, or who have non-standard qualifications, or who wish work or life experience to be taken into account as part of their application.

For further information see [liverpool.ac.uk/study/undergraduate/applying/mature-students](https://liverpool.ac.uk/study/undergraduate/applying/mature-students)

## Diversity and equality

We attach the greatest importance to our policies and activities to promote diversity and equality of opportunity. Full details on these policies can be found online at [liverpool.ac.uk/equality-diversity-inclusion](https://liverpool.ac.uk/equality-diversity-inclusion)

## Disrupted education

We offer additional support to young people who have been affected by "disrupted education". See [liverpool.ac.uk/widening-participation/secondary-disruptededucationprogramme](https://liverpool.ac.uk/widening-participation/secondary-disruptededucationprogramme)

## Contextual admissions

Building on our long-standing success in widening participation, we have adopted the use of contextual offers for applicants in the main UCAS recruitment cycle. This has provided up to a two-grade reduction\* from the standard offer for under-represented groups informed by:

- Socio-economics, based on permanent UK address
- UK Care Experienced students (ie qualifying students who have spent any amount of time in Local Authority care and meet associated eligibility criteria used nationally).

\*Exceptions may apply. For further details please contact the UK Admissions team.

For more information please visit our website [liverpool.ac.uk/undergraduate/applying/policies-and-statements/contextual-data/contextual-admissions](https://liverpool.ac.uk/undergraduate/applying/policies-and-statements/contextual-data/contextual-admissions)

# CONNECT WITH US

Open Days will be held on:

- Friday 20 June 2025
- Saturday 21 June 2025
- Saturday 20 September 2025
- Saturday 11 October 2025
- Online Open Week: 3-7 November 2025



Find more information and register at [liverpool.ac.uk/penday](https://liverpool.ac.uk/penday)



## UNDERGRADUATE ON-DEMAND

Our Undergraduate on-demand webpages are the place to explore our campus, programmes of study, accommodation and much more with a mix of live and on-demand sessions. Here you'll find a warm welcome from our staff and students as you delve into your subject area of choice, as well as life on campus and in the city. Discover it all, and find your home at Liverpool.

[liverpool.ac.uk/undergraduate/on-demand](https://liverpool.ac.uk/undergraduate/on-demand)



Explore our undergraduate on-demand content

## Chat with our students

Our students are the experts on what it's like to be at Liverpool. There's no need to wait for one of our virtual events to start a conversation with them. They're ready and waiting to answer your questions.

[liverpool.ac.uk/study/chat](https://liverpool.ac.uk/study/chat)



Chat with our students

## Explore our virtual tour

Our beautiful campus in the city offers you the best of all worlds. A compact campus where all our facilities and services are within a short distance, with everything our vibrant city has to offer just a short walk down the hill.

[liverpool.ac.uk/virtual-tour](https://liverpool.ac.uk/virtual-tour)



Take a look around our virtual tour

## Get in touch

Got a question about any of our programmes or any aspect of study at Liverpool? Contact our enquiries team. [liverpool.ac.uk/undergraduate/contact-us](https://liverpool.ac.uk/undergraduate/contact-us)



Get in touch



# INDEX

For academic programmes please see the full programme list, pages 52–65.

## A

Accommodation **22–25**  
Access routes **52, 67**  
Admissions **66–67**  
Alumni **08–09**  
Applications **66–67**  
Application deadline **66–67**  
Art and museums **12–18**

## B

Bursaries see *Plan your finances* **36**

## C

Campus map **72–73**  
Campus Residences **20–23**  
Careers **10–11**  
Childcare facilities **32**  
City map **20–21**  
Combining degrees **52**  
Computing Services **31**  
Counselling Service **34**  
Contextual offers **52**  
Crown Place **22–25**

## D

Disabled Students  
– Admissions **67**  
– Support **32**

## E

Employability **10–11**  
English Language Centre **29**  
Entry requirements **66**

## F

Faith **33**  
Fees and financial support **36**  
– Accommodation **22–25**  
– Tuition fees **36**  
Foundation degrees **52**

## G

Global Opportunities **38–39**  
Go Higher **67**  
Graduates **08–09**  
Guild of Students **40–41**  
Greenbank Student Village **22–25**

## H

Halls **22–25**  
How to apply **66–67**  
– Accommodation **22–25**  
– Applications and admissions **66**

## I

International community **26**  
International Advice and Guidance team **33**

## L

Languages at Liverpool **31**  
Learning resources **30–31**  
Libraries **30**  
Life in the city **12–18**  
Liverpool Guild of Students **40–41**

## M

Map (Campus) **72–73**  
Map (City) **20–21**  
Mature Students **67**  
Melville Grove **22–25**  
Mental Health Advisory Service **34**  
Money Advice and Guidance **37**  
Music on campus **44–45**

## N

Nightlife **12–18**

## O

Open Days **68**

## P

Performance Programme **43**  
Philharmonic Court **22–25**

## R

Religion **33**  
Research **48–49**  
Restaurants **12–18**

## S

Shopping **12–18**  
Societies **40–41**  
Sport Liverpool **42–43**  
Support **32–35**  
– Care leavers  
– Childcare  
– Counselling  
– Disabled students  
– Finance  
– Health  
– International students  
– Religion

## T

Terms and conditions **70**  
Theatre **12–18**  
Transport links **19**  
Tuition fees **36**  
Tung Auditorium **44**

## U

UCAS **66**

## V

Vine Court **22–25**  
Virtual tour **69**  
Visas **29**

## W

Widening Participation **28**

## Y

Year Abroad **38**  
Yoko Ono Lennon Centre **44–45**



## Terms and conditions

For details please see [liverpool.ac.uk/undergraduate/applying/policies-and-statements/](https://liverpool.ac.uk/undergraduate/applying/policies-and-statements/)

# CITY CAMPUS



Victoria Gallery & Museum

Sports and Fitness Centre

Harold Cohen Library

Crown Place

Vine Court

Liverpool Guild of Students

Sydney Jones Library



We are big ideas and bold,  
independent thinkers.

Individual triumphs  
and world firsts.

Lively debates and  
life-changing research.

Flashes of inspiration and  
hard-earned breakthroughs.

**We are the original redbrick.**

## Undergraduate Prospectus 2026

University of Liverpool  
L69 7ZX

[liverpool.ac.uk](http://liverpool.ac.uk)

### Undergraduate enquiries and applications

T: +44 (0)151 794 5927

E: [ugrecruitment@liverpool.ac.uk](mailto:ugrecruitment@liverpool.ac.uk)

[liverpool.ac.uk/undergraduate/  
contact-us](http://liverpool.ac.uk/undergraduate/contact-us)

If you need any sections of this  
prospectus in an alternative  
format, please contact:

T: +44 (0)151 794 5927



**COME  
TO AN  
OPEN DAY.**