



2022–2023

Undergraduate Students Handbook



RIGHT THE FUTURE™

Amazing things happen when diverse communities work together to create positive change. Together, we are making things right for our communities, our planet and our future.

Welcome!

Since our founding in 1959, we have provided a diverse community of students with access to a high-quality, research-intensive learning environment committed to the public good. Wherever your career takes you, the knowledge and skills you will develop at York through immersive experiential learning will prepare you for success in a rapidly changing global knowledge economy. You are joining a network of motivated, talented and innovative students, faculty, course directors, staff and alumni, who are working together to right the future. Welcome to York, a community connected to what matters and where remarkable opportunities await you.

Rhonda Lenton
President and Vice-Chancellor
York University



York by the Numbers

12,000+
students are first
in their family to
attend university

10,205+
international
students from
156 countries

\$48M+
in undergraduate
bursaries and
scholarships

350,000
global alumni
network



Table of Contents

A Community of Changemakers	2
New Ways of Teaching and Learning	3
A Space for Everyone	4
In the Heart of a Vibrant City	5
Build Confidence and Community	6
Your Partners in Success	7
Learn by Doing	8
Scholarships, Awards and Fees	9
Pursue Your Passion.	10
Find Your Program.	
How to Apply	12
Next Steps	13

Land Acknowledgment

York University recognizes that many Indigenous Nations have longstanding relationships with the territories upon which York University campuses are located that precede the establishment of York University. York University acknowledges its presence on the traditional territory of many Indigenous Nations. The area known as Tkaronto has been care taken by the Anishinabek Nation, the Haudenosaunee Confederacy, and the Huron-Wendat. It is now home to many First Nations, Inuit and Métis communities. We acknowledge the current treaty holders, the Mississaugas of the Credit First Nation. This territory is subject of the Dish with One Spoon Wampum Belt Covenant, an agreement to peaceably share and care for the Great Lakes region.

A Community of Changemakers

York students, faculty and alumni are united in our commitment to inclusion, community engagement, and social and economic justice. Learn how York is creating positive change at: go.yorku.ca/why-york.



“Becoming a Student Success Mentor Lead with Black Excellence at York University (BE YU) is a major step in being an accountable representative to my Black community. I am facilitating important conversations and events that will create a more equitable space on campus for my peers.”

Kobe Cargill (he/him), 3rd year Actuarial Science
Student Success Mentor Lead, Black Excellence at York University (BE YU)
Volunteer, York United Black Students Alliance

“My work with York’s Ecological Footprint Initiative has truly connected me in a more profound way to my area of study. It has ignited a fire within me to advocate for environmental justice and realize my dreams of becoming a conservationist.”

Summer Solmes (she/her), 3rd year Environmental Studies
Communications Coordinator, Ecological Footprint Initiative,
Dean’s Changemaker Placement

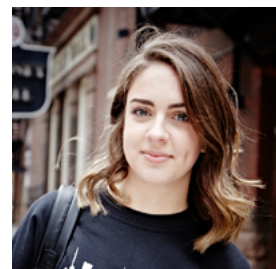


Meet our Top 30 Changemakers Under 30

It takes a true leader to inspire positive change in the world. Meet York University’s first-ever Top 30 Changemakers Under 30: inspiring and diverse alumni leaders who are making a meaningful difference. go.yorku.ca/top30



Miranda Baksh,
BES '17, MES '19
CEO and Founder,
Community Climate
Council



Deanna Lentini,
BSc '16
Founder, Fix the 6ix
Physiotherapist



Prakash Amarasooriya,
BSc '15
Manager, Scorecard
Operations, TD Bank
Co-host, Real Talk
Roundtable

New Ways of Teaching and Learning

York’s leading teaching and research are informed by our commitment to social justice, sustainability and the public good. Through our research, we strive to better understand and serve the world around us.

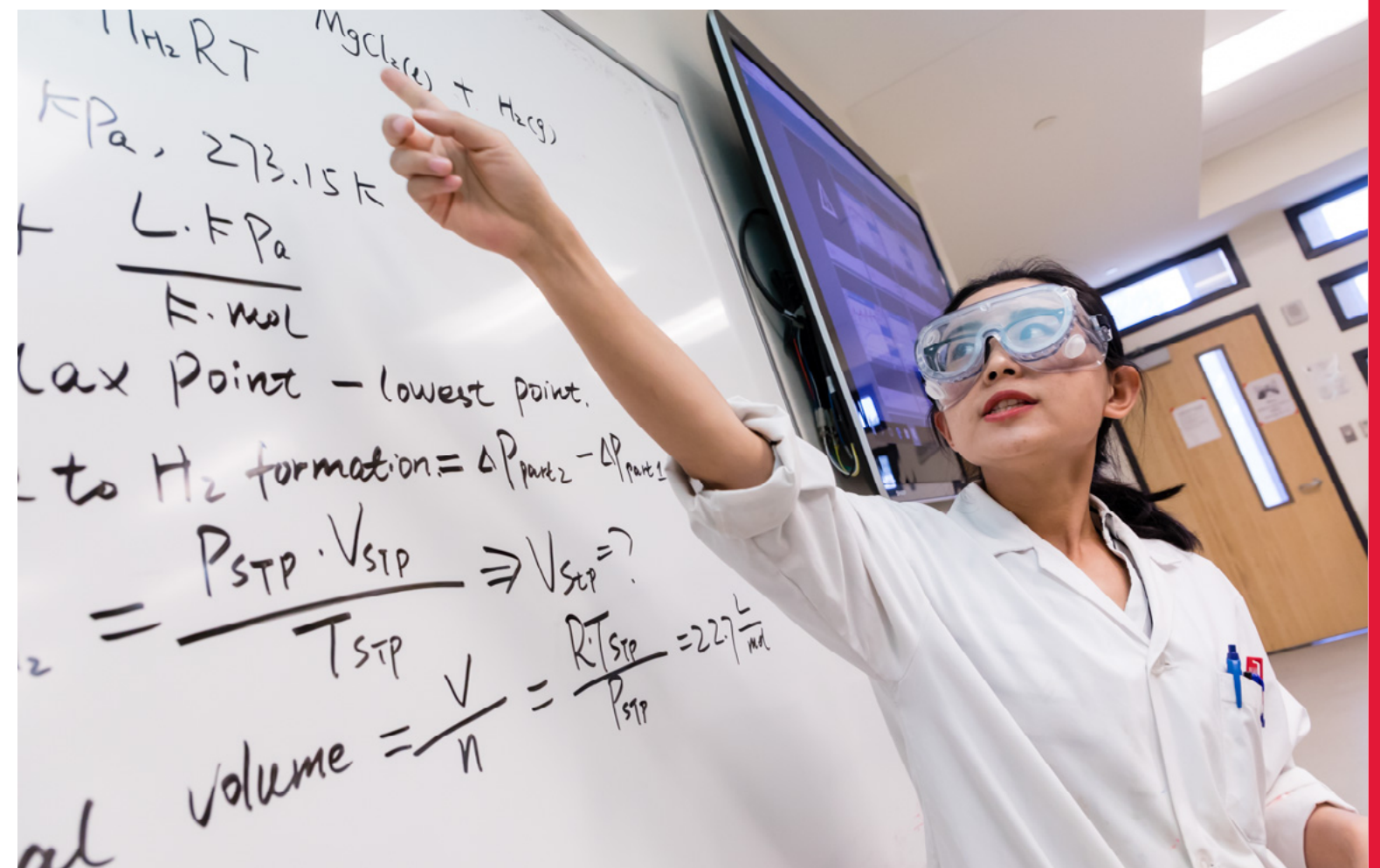
Purposeful Research for a Better Future

- **Canadian Observatory on Homelessness:** the largest national research institute dedicated to homelessness in Canada.
- **City Institute at York (CITY):** brings together urban scholars, NGOs and city planners to tackle the complexity of urbanism.
- **Entrepreneurial Leadership & Learning Alliance (ELLA):** Ontario’s first accelerator focused on supporting women-led product and service ventures.
- **Home to 27 organized research units** studying feminist research, bee ecology, refugee studies, earth and space science, digital literacy and more.

Student Research Opportunities

As a student at York, contribute to meaningful research and discoveries through:

- Research Practicums
- Paid and Volunteer Research Positions
- Undergraduate Research Fairs
- Labs and Field Courses



A Space for Everyone

Our campuses are places where bold ideas take shape and lifelong connections are made. York is an accessible and inclusive space with 20+ community support partners to make your health, safety and sense of belonging our greatest priorities. go.yorku.ca/campuses

Community Safety

provides the York U Safety App, goSAFE, security services and emergency preparedness.

Our Campuses

Keele Campus: Walk the scenic paths of our **main campus**, a thriving community hub enhanced by its proximity to the GTHA, featuring athletic facilities, studios, labs, residences, restaurants and green spaces.

Glendon Campus: Located in the dynamic, urban landscape of midtown Toronto, Glendon offers an intimate and welcoming **bilingual environment** at its picturesque, ivy-lined campus.

Markham Campus: Opening in 2023, academic programs and research at our **newest campus** will revolve around the core themes of technology and entrepreneurship and how they are driving innovation.



Keele Campus



Glendon Campus



Markham Campus



“York has beautiful campuses filled with a diverse community. There are several places to study, eat, talk, rest and more. In addition to being extremely accessible to the city, seeing familiar faces around campus always brightens my day and strengthens my sense of belonging.”

Leena Mohamed (she/her), 4th year Biology, Psychology Minor

In the Heart of a Vibrant City

York’s main campus is located in the heart of the Greater Toronto & Hamilton Area (GTHA), just a subway ride away from downtown Toronto or uptown Vaughan Metropolitan Centre. With two subway stations on campus, as well as a network of buses, GO transit and light rail transit, you can easily explore the GTHA’s diverse neighbourhoods, parks, sporting events and concerts.



Toronto: A Place to Love

#1 safest city
in North America
(The Economist, 2021)

7 professional
sports teams

500+
live music
venues

1,500+
parks

2 subway stations
on our Keele Campus

Did YU Know?

York provides free **shuttle services** between our Glendon and Keele campuses, VanGo service to help students with disabilities get around campus and 9,200+ parking spaces.

Build Confidence and Community



Close-Knit Colleges

York's college system helps to make a big university feel small. After you accept your offer of admission, you'll be placed in one of York's nine Colleges, providing you with a community in which to study, attend social activities, get academic help, work and volunteer. go.yorku.ca/colleges

Home Away from Home

Join 3,000+ students living on campus in our 10 residences. Choose a single, super single or double room with shared common spaces and enjoy the convenience of a residence meal plan. York's Residence Life team creates a supportive community experience with amazing opportunities to make friends from around the world, learn and succeed. go.yorku.ca/residence

Residence is guaranteed for first-year students admitted to the Fall Session directly from a high school who apply by June 1.

Off-Campus Housing: Explore alternative housing options through listings, roommate boards and renter resources at go.yorku.ca/offcampus.

Residence Costs	Traditional Dorm*	Suite (includes kitchenette)*	Meal Plans
	<ul style="list-style-type: none"> • Single – \$8,963 • Super Single – \$9,366 • Double – \$8,333 	<ul style="list-style-type: none"> • Single – \$7,512 • Super Single – \$8,367 • Double – \$6,476 	<ul style="list-style-type: none"> • \$2,750 to \$5,000 (depending on room type).

Visit go.yorku.ca/residence for a full break-down of costs and details for the upcoming year as the above estimates are based on the previous academic cycle and are subject to change.

* Room types may be subject to change pending University guidelines in response to current events.

Supporting Your Transition to University

We help you succeed from the moment you accept our offer of admission! We provide a variety of supports and orientation programming to help you feel ready, including online prep modules, workshops and customized supports for equity-deserving groups. Learn more at

go.yorku.ca/first-year.



Your Partners in Success

To learn more, visit go.yorku.ca/services.



“The massive support I received from Student Accessibility Services assisted me in achieving my academic goals and seeing a radical change in myself. I am proud to have graduated *summa cum laude*.”

Raffi Al Hajj (he/him), BA '21, Languages, Literatures & Linguistics
Master of Science in Management Practice (MScMP) candidate



Student Counselling, Health & Well-being offers walk-in counselling, workshops, crisis support, mental health consultation and more.



Student Accessibility Services provides support and accommodations to students with mental, physical, sensory, medical and/or learning disabilities.



Student Community & Leadership Development offers peer-to-peer programs and services that support first-year transition, leadership development and student engagement opportunities.



Writing Centres offer one-to-one writing support, ESL and disability support, workshops and group sessions.



Libraries: Five libraries offer you a wealth of in-person and online learning resources.



Learning Skills Services helps you develop academic skills like time management, study habits and maintaining school-life balance.



Centre for Indigenous Student Services provides support services and gathering spaces for our diverse Indigenous community.



Career Education & Development provides job search and career exploration webinars, employer networking events, 1:1 career support and online learning modules to get you job-ready.



Athletics & Recreation is for every level of athlete, with varsity athletics, sports clubs, intramurals and exercise classes.



York International will help enrich your education with global learning opportunities.

Learn by Doing

“The opportunity to work on a real satellite space mission with the Canadian CubeSat Project team has made me a more confident leader. In addition to gaining practical experience, I’m excited to play an integral role in shaping what the future of Space Engineering education can look like.”

Haya Mohamed (she/her), 4th year Space Engineering Systems Team Member, ESSENCE pilot program, Canadian Space Agency



York’s Career Education & Development team offers support with job search, career development and experiential education to help you get job-ready for graduation.

Did YU Know?

York has industry partnerships with Shopify, Uber, Google and Facebook.
go.yorku.ca/experience

6,000+ employers recruited from York last year

10,000+ employment opportunities posted last year

8,500+ experiential education opportunities offered last year

In the Classroom/Lab

Participate in university research projects with faculty members while earning a competitive wage with the Research at York (RAY) program.

In the Community

Work with a local organization to conduct research, engage in community service or manage an off-campus project.

On Campus

York’s Work/Study and Leadership, Engagement and Ambassadorship (LEAP) programs offer on-campus work opportunities to eligible students.

In the Workplace

Alternate your academic terms with paid, full-time work experience through co-op, internships, fieldwork and more.

In the World

Participate in an international exchange, summer abroad program or internship at one of our 280+ partner universities.

Scholarships, Awards and Fees

Celebrating Excellence

Here are just some of our awards to recognize your tenacity, determination and achievements:

- **\$40,000 Tentanda Via Award (NEW!)**
45 domestic awards available.
Recognizes students who have overcome personal barriers in the pursuit of a university education and/or leaders who are making an impact on the compelling issues of our time.
- **\$80,000-\$100,000** Schulich Leader Scholarship
- **\$32,000** Governor’s Award of Distinction
- **\$24,000** Awards of Achievement

Explore these and many other awards at go.yorku.ca/scholarships.

York Automatic Entrance Scholarships

Our entrance scholarships are automatically applied, renewable at all levels, and can be regained when you recover the minimum required GPA. Recipients of this scholarship who elect to participate in an exchange program in years 2, 3 or 4 will also receive the York University Study Abroad Award, valued at \$1,500.

Admission Average	Total Value of Award*
95-100%	\$16,000 (\$4,000 x 4 years)
90-94.9%	\$10,000 (\$2,500 x 4 years)
85-89.9%	\$6,000 (\$1,500 x 4 years)
80-84.9%	\$4,000 (\$1,000 x 4 years)

* Available to domestic high school applicants only, admitted to a direct entry undergraduate program.

Financial Support

- Automatic Entrance Scholarships
 - Merit-Based High Value Awards
 - Financial Need-Based Bursaries
 - Ontario Student Assistance Program (OSAP)
 - Financial Advising
 - On-Campus Jobs
- ...and more!

Note: You do not need an offer of admission to apply for scholarships, awards and bursaries.

Fees and Expenses

Below is a list of some expected costs for your first year. This list represents an estimate only. For course and program fees, visit go.yorku.ca/fees.

Expenses*	Estimated Costs (for students living on campus)
Average full-time tuition (5 courses) + compulsory supplementary fees	\$7,100
Textbooks and supplies	\$1,000 to \$1,500
Housing	From \$7,512 (residence)
Meal plan/Groceries	\$2,750 to \$5,500
Health Plan	\$262
Estimated Totals**	\$21,900

* These are yearly costs based on a full-time student pursuing a Bachelor of Arts for the Fall/Winter 2021-2022 session.

** Totals are based on highest cost range for Canadian students. Fees are subject to change.



“I’m proud to be the recipient of the Award of Achievement valued at \$24,000. York University has given me an opportunity to stay involved in student life while maintaining my high academic standing.”

Helia Zamani (she/her), 4th year Biomedical Science Recipient, Award of Achievement

Pursue Your Passion. Find Your Program.

Benefit from engaging programs that offer innovative course design and diverse experiential education opportunities.



School of the Arts, Media, Performance & Design (AMPD)

yorku.ca/discover/ampd

Creativity is your commodity. As you develop your passion with AMPD, benefit from superb training, rich industry connections, world-class facilities and access to an engaged, collaborative arts community.

Programs: Art History (BA); Studio Art (BFA); Cinema & Media Studies (BA); Digital Media (BA); Film Production (BFA); Media Arts (BFA); Screenwriting (BFA); Integrative Arts (BFA); Dance (BFA); Music (BA, BFA); Theatre (BA, BFA); Design (BDes)

Faculty of Education

yorku.ca/discover/edu

Join a leading faculty in Canada that is reinventing education for a diverse, complex world. Become a powerful catalyst for change by contributing to and strengthening the communities where you live and work.

Programs: Education (BEd); Educational Studies (BA); WAABAN Indigenous Education (BEd)

Faculty of Environmental & Urban Change (EUC)

yorku.ca/discover/euc

Become a changemaker for a just and sustainable future. Join EUC in a call-to-action to respond to today's most pressing challenges facing people and the planet. Discover career paths that will create a better world.

Programs: Cities, Regions, Planning (BES); Environmental Arts & Justice (BES); Environmental Science (BSc); Global Geography (BA); Sustainable Environmental Management (BES)

Glendon College / Collège Glendon

yorku.ca/discover/glendon

Developing your language advantage by earning a bilingual degree is a smart choice — and easier than you think. At Glendon College, enjoy small classes in a close-knit community where your colleagues and instructors know you by name.

Bilingualism is not an admission requirement to most Glendon College programs.

Program Areas: Over 20 programs available in Languages; Culture & Writing; Social Sciences and Humanities; Government, Law & Social Justice; Business Economics; Sciences; International Studies

Faculty of Health

yorku.ca/discover/health

Become part of a growing, connected network that leads constructive change in health and healthcare across Canada and the globe — keeping more people healthier, longer.

Programs: Global Health (BA, BSc); Health Studies (BHS); Kinesiology & Health Science (BA, BSc); Neuroscience (BSc); Nursing (BScN); Psychology (BA, BSc)

Lassonde School of Engineering

yorku.ca/discover/lassonde

It isn't enough to imagine or advocate for a better future; somebody has to build it. Lassonde empowers you to put ideas into action and push the world forward, as you dive into real-world challenges informed by industry experts.

Programs: Computer Science (BA, iBA, BSc, iBSc); Computer Security (BA, BSc); Digital Media (BA); Earth & Atmospheric Science (BSc); Engineering & International Development Studies (BEng + BA); Engineering (BEng) — Civil, Computer, Electrical, Geomatics, Mechanical, Software and Space

Faculty of Liberal Arts & Professional Studies (LAPS)

yorku.ca/discover/laps

Respond to a call for cross-cultural communication and interpersonal skills by joining a faculty that's **ranked in the top 10 in Canada** across several disciplines. With highly flexible and interdisciplinary degree options, study what you love and learn what you need.

Program Areas: Over 125 programs available in: the Humanities; Social Sciences; Communications; Law and Politics; Business and Information Technology

Schulich School of Business

yorku.ca/discover/schulich

Join Canada's Global Business School and immerse yourself in a cutting-edge business education with direct program access from day one. Schulich develops responsible leaders who balance business and the public good.

Programs: Bachelor of Business Administration (BBA); International Bachelor of Business Administration (iBBA)

Faculty of Science

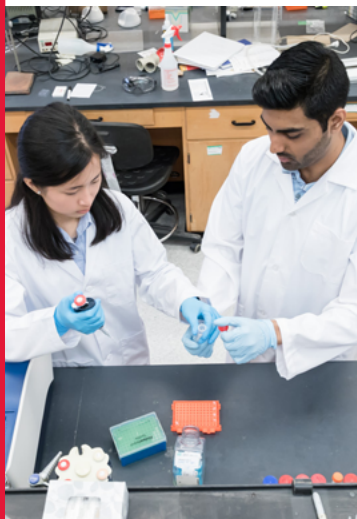
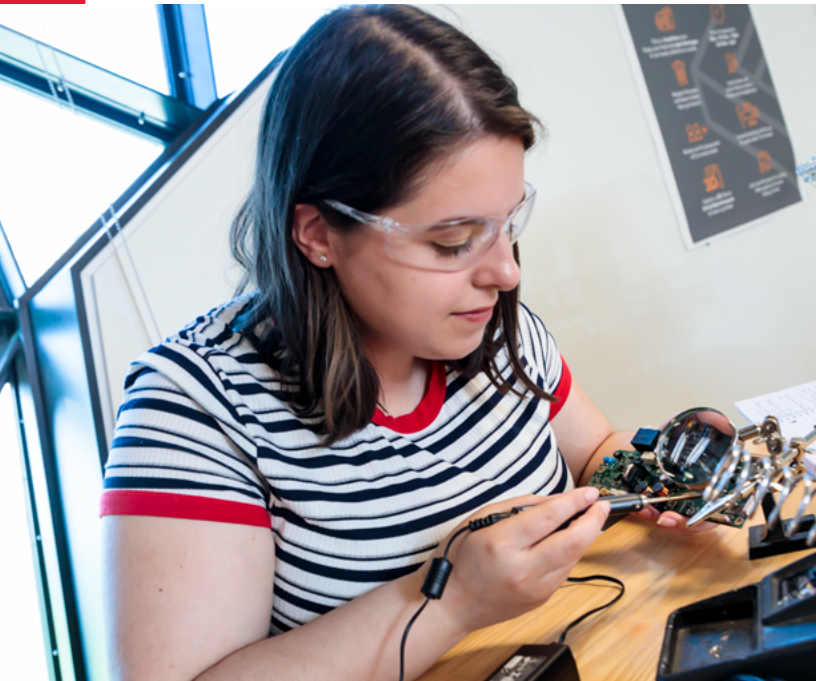
yorku.ca/discover/science

Develop a science mindset that's valued by employers in all sectors and join a collaborative community who share your curiosity and passion.

Program Areas: Life Sciences; Chemical Sciences; Physics & Astronomy; Mathematics & Statistics

Extend Your Learning at York:

- York's internationally renowned **Osgoode Hall Law School** offers an innovative and experiential legal education delivered by the country's top legal minds.
- York's **Faculty of Graduate Studies** offers more than 60 full- and part-time professional and academic degree programs and diplomas to deepen your expertise and lead you to a fulfilling career.



Admission Requirements

All applicants to York University MUST meet the general admission requirements:

- Ontario Secondary School Diploma (OSSD);
- six 4U/4M courses, including ENG4U or FRA4U;
- all applicable program and faculty requirements; and
- proof of language proficiency. go.yorku.ca/lang-2022

If you are an out-of-province (non-Ontario) applicant, visit go.yorku.ca/requirements.

Program-Specific Admission Requirements

Below is a list of undergraduate programs that have admission requirements and/or a supplementary application beyond those required for general admission to York. For a full list of programs and admission requirements, visit go.yorku.ca/requirements.

Meeting the minimum requirements or admission grade average ranges listed online or within York University's publications should not be viewed as a guarantee of admission.

Note: Additional minimum prerequisites and grade minimums may apply.

School of the Arts, Media, Performance & Design (AMPD)	
Digital Media (BA)	4U math (minimum 75%) 4M arts or similar arts training (recommended)
Integrative Arts (BFA)	Upper level arts course taken in High School is encouraged
NOTE: Supplementary Evaluation Requirement In addition to applying for admission to York through the OUAC, applicants to some AMPD programs must complete an audition, interview or portfolio review. Details: go.yorku.ca/ampd-eval .	

Faculty of Education	
NOTE: Supplementary Evaluation Requirement In addition to applying for admission to York University through the OUAC, applicants to the Concurrent Direct Entry Bachelor of Education must complete a supplementary application. Note, Consecutive and Technological Education BEd applicants must apply by December 1, 2021 through OUAC Teacher Education Application Services at ouac.on.ca/teas . Details: go.yorku.ca/deadlines .	

Faculty of Environmental & Urban Change	
Environmental Science (BSc)	SBI4U, SCH4U, MCV4U, MHF4U One additional 4U or 4M

Glendon College / Collège Glendon	
Biology (BSc)	SBI4U, SCH4U, MHF4U SPH4U (recommended)
Business Economics (BA)	MHF4U (recommended)
Economics (BA)	MCV4U (recommended)
Communications (BA, iBA)	4U French
International Studies & Business Administration / Études internationales et administration des affaires (iBA/BBA Dual Degree)	MHF4U MCV4U or MDM4U No prerequisite below 70% Supplemental Evaluation No more than two 4M courses
Mathematics (BA)	MHF4U MCV4U (recommended)
Psychology (BSc, iBSc)	SCH4U or SPH4U 4U math
Translation (BA, iBA)	4U English (ENG4U, EAE4U or equivalent) 4U French (FRA4U, FIF4U, FEF4U or equivalent)
Some high school French is recommended for most Glendon programs.	

Faculty of Health	
Global Health (BA)	4U math SBI4U or SCH4U or SPH4U
Kinesiology & Health Science (BA)	
Global Health (BSc)	4U math SCH4U or SPH4U
Kinesiology & Health Science (BSc)	
Health Studies (BHS)	4U math (recommended)
Neuroscience: Psychology (BSc)	SBI4U, SCH4U, MHF4U
Neuroscience: Kinesiology & Health Science (BSc)	
Nursing: 4-year direct entry program (BScN)	4U math SBI4U SCH4U or SPH4U
Psychology (BA)	ENG4U
Psychology (BSc)	4U math SCH4U or SPH4U

Lassonde School of Engineering	
Computer Science (BA, iBA)*	MHF4U one other 4U Math (MCV4U recommended)
Computer Security (BA)*	
Computer Science (BSc, iBSc)*	MHF4U SCH4U or SPH4U one other 4U math (MCV4U recommended)
Computer Security (BSc)*	
Digital Media (BA)	4U math (minimum 75%) 4M arts or similar arts training (recommended)
Earth & Atmospheric Science (BSc)	SPH4U, MHF4U, MCV4U SCH4U (recommended for Atmospheric Science & Space Science streams)
Engineering (BEng)**	SCH4U, SPH4U, MHF4U, MCV4U
* Required: Minimum Math average of 75% and no Math grade below 65%. ** With no prerequisite grade below 70%.	

Faculty of Liberal Arts & Professional Studies	
Business & Information Technology	
Business Economics (BA)	MHF4U MCV4U (recommended)
Economics (BA)	
Financial & Business Economics (BA)	
Commerce (BCom)	MHF4U
Disaster & Emergency Management (BDEM)	MHF4U or MDM4U
Human Resources Management (BHRM)	4U math
Information Technology (BA)	
Information Technology (BCom)	MHF4U
Languages, Culture & Writing	
Creative Writing (BA)	Minimum of one full year of undergraduate studies and a portfolio evaluation. For more information, visit go.yorku.ca/creative-writing .
Speech & Language Sciences (BA)	4U math
Law & Politics	
Public Administration (BPA)	4U math

Schulich School of Business	
Business Administration (BBA, iBBA)	MHF4U (minimum 70%) MCV4U or MDM4U (MCV4U recommended) No more than two 4M courses
NOTE: Supplementary Evaluation Requirement In addition to applying for admission to York through the OUAC, applicants to Schulich must submit a supplementary application. Details: schulich.yorku.ca/suppapp .	

Faculty of Science	
Life Sciences	
Biochemistry (BSc)	SBI4U, SCH4U, MHF4U, MCV4U SPH4U (recommended)
Biophysics (BSc)	SBI4U, MHF4U, MCV4U, SPH4U SCH4U (recommended)
Biology (BSc, iBSc)	SBI4U, SCH4U, MHF4U SPH4U (recommended)
Biomedical Science (BSc, iBSc)	
Biotechnology (BSc)	
Environmental Biology (BSc)	
Environmental Science (BSc)	MHF4U, SBI4U, SCH4U, MCV4U
Neuroscience (BSc)	MHF4U, SBI4U, SCH4U
Undecided Major (BSc)	MHF4U SBI4U or SCH4U or SPH4U
Mathematics & Statistics	
Actuarial Science (BA)	MHF4U MCV4U (recommended)
Applied Mathematics (BA)	
Mathematics (BA)	
Mathematics for Education (BA)	
Statistics (BA)	
Applied Mathematics (BSc)	MHF4U SBI4U or SCH4U or SPH4U MCV4U (recommended)
Mathematics (BSc)	
Mathematics for Education (BSc)	
Statistics (BSc)	
Mathematical Biology (BSc)	SBI4U, SCH4U, MHF4U, MCV4U SPH4U (recommended)
Physical Science	
Chemistry (BSc)	MHF4U, SCH4U One additional 4U or M science MCV4U (recommended) SPH4U (recommended)
Physics & Astronomy (BSc)	SPH4U, MHF4U, MCV4U SCH4U (recommended)

Reminder: Only programs with specific academic prerequisites are listed. To view all program offerings, visit go.yorku.ca/program-search.

Explore all program requirements:



go.yorku.ca/requirements

How to Apply

1. Submit Your Application

Visit go.yorku.ca/program-search and select the program you'd like to apply to. Submit your admission application through the Ontario Universities' Application Centre (OUAC) at:

- ouac.on.ca/ouac-101 if you are an Ontario high-school student; or
- ouac.on.ca/ouac-105 if you are applying from outside Ontario.

As soon as we receive your application, we will contact you via email and grant you access to view updates about your York University admission application using our online platform, MyFile.

2. Submit Required Documents

Once you receive access to your MyFile account, you can start uploading required documents to our system. Required documents may include official transcripts (unofficial grades may be uploaded for conditional admission), proof of language proficiency and supplementary information (if required). Your MyFile account will provide details if additional documentation is needed. Visit go.yorku.ca/applied for document information and submission/upload instructions.

3. Submit Proof of English Language Proficiency (if required)

Programs at Keele Campus are offered in English, while programs at our Glendon Campus are offered in English and French. To gain admission, you may need to demonstrate proficiency in your program's language of instruction by presenting a minimum score on an accepted language test. To find out if you require a language test and how to submit your scores, visit go.yorku.ca/lang-2022.

Admission Requirements

What You Need to Apply:

- Ontario Secondary School Diploma (OSSD);
- six 4U/4M courses, including ENG4U or FRA4U;
- all applicable program-specific requirements;
- a supplementary application (if applicable to the program); and
- a proof of language proficiency (if required).

To see if you meet English proficiency requirements, visit go.yorku.ca/lang-2022.

Applying from outside of Ontario or as a transfer student?

Visit go.yorku.ca/requirements for your specific provincial equivalents.

Application Deadlines: Your application deadline depends on when you'd like to start and where you're applying from. go.yorku.ca/deadlines

Start Term at York
 Winter 2022 (January)
 Summer 2022 (May)
 Fall 2022 (September)

Application Deadline*
 November 1, 2021
 February 15, 2022
 January 13, 2022
 (for Ontario 101 applicants)

* AMPD programs, Business Administration and Education have additional supplementary application deadlines. Visit go.yorku.ca/deadlines for details.

Meeting the minimum requirements or admission average ranges listed online or within University publications is not a guarantee of admission: go.yorku.ca/disclaimer.

Next Steps



Stay on Track

November

- Join us online at our virtual Fall Campus Days on **November 20** (Keele Campus) and **November 21** (Glendon Campus).
- Learn about our exciting programs, student life at York and how to start your application. go.yorku.ca/fcd

December

- Early offers of admission start to go out using a combination of your grade 11 and 12 grades.
- Apply for York entrance awards and scholarships at go.yorku.ca/myfile between December and April. You do not need an offer of admission to apply.

December – January

- Submit your supplementary application or documentation if you applied to a program that requires it (programs in AMPD, Business Administration, Social Work and the Glendon iBA/BBA dual degree).
- **Reminder – OUAC application deadline for Ontario (101) applicants: January 13, 2022.**

March

- Come and say hello! Join us at our Spring Open House to experience York and connect with the community. go.yorku.ca/soh

June

- Accept your offer of admission by June 1.
- Apply for residence by the **June 1 deadline** to qualify for guaranteed on-campus residence. Your roommates will be assigned to you in mid-July.

York University strives to ensure the completeness and accuracy of information contained in this publication. However, the University reserves the right to change any of the information at any time without notice.

Connect your future to ours.
 Join us at an upcoming event.

go.yorku.ca/events


Markham Campus: Opening Fall 2023

YORK
UNIVERSITY
UNIVERSITY 

**RIGHT
THE
FUTURE™**

Challenging the traditions of what a university campus can offer, Markham Campus will act as a unique meeting place for students to interact directly with employers, start-up companies and community partners from across the region.

 @yorkstudents

 @yorkstudents

 @yorkandu

YORK 