

As an innovative and sustainability-focused university, SUT aims to become a leading academic hub and partner in the fields of science, technology, research, innovation, both locally and globally. Our mission is to actively address complex community-based challenges in alignment with the Sustainable Development Goals (SDGs).

SUT is committed to exploring opportunities and fostering collaborations, joint research initiatives, and partnerships across various domains, including science and technology, engineering, agricultural technology, health sciences, digital technology, and entrepreneurship. We firmly believe in the power of work-integrated research, driven by a cooperative education philosophy, to strengthen academic, industrial, and societal connections.

SUT is dedicated to create and inspire individuals to shape their own future, reflecting our core university value of "PRIDE." Together, we aim to make a meaningful impact on society by advancing knowledge, driving innovation, and empowering communities.

**UNDERGRAD  
 ADMISSION**

For international students, there are two admission rounds, Royal Scholarship (for ASEAN students) and Regular admissions. For more details, visit <https://interadmission.sut.ac.th/>

**POSTGRAD  
 ADMISSION**

PG admissions are rolling. There are three admission rounds, one for each trimester. For more details, visit <https://interadmission.sut.ac.th/>

**STUDENT  
 EXCHANGE  
 PROGRAMS**

SUT offers diverse exciting short and long term exchange programs throughout the year. For more details visit <https://cia.sut.ac.th/exchange>

# SURANAREE UNIVERSITY OF TECHNOLOGY



**ACADEMIC CALENDAR**

Trimester	Period
Trimester 1	August - November
Trimester 2	December-March
Trimester 3	April-July

**SUT  
 Outlook**



**Life@SUT**



**SUT Booklet**



# Research Innovation & Engagement



SUT was shortlisted for **Outstanding Contribution to Environmental Leadership** in **THE Awards Asia 2023** for its Innovations for Climate Neutral Sustainable Tourism at Khao Yai National Park. [f ANSEEKhaoyai](#)



**SUT innovation products** range from fast-growing and disease resistant korat chicken strains to offer high quality food nutrients plus high collagen, with good governance. [koratchicken.sut.ac.th](http://koratchicken.sut.ac.th)



**2X Plus** - sperm sorting technology for farming to give higher than 80% female, **bio-degradable cushions from rubber trees**, **eco-friendly autoclavable bioplastic packaging**, **plasma technology for disinfection** installed at hospitals and buildings and **nitrogen capture fertilizers**. Our research innovation supports SUT - SDGs strategies to solve problems and create new values & solutions for our partners and communities.



**IP Office** **Product innovation**



## QUICK FACTS

- YEAR RANGE 2018-23
- PUBLICATIONS WITH INTERNATIONAL COLLABORATION 46%
- SCHOLARLY OUTPUTS 4,417 (45.6% OPEN ACCESS)
- CITATION COUNTS 33,291
- CITATIONS PER PUBLICATION 7.5
- FIELD CITATION IMPACT 0.95
- H5-INDEX 53



## KEY AREAS

- MAN POWER FOR THE FUTURE
- IMPACTFUL RESEARCH AND INNOVATION
- SUSTAINABLE DEVELOPMENT



## ACADEMIC INSTITUTES

- ENGINEERING
- SCIENCE
- AGRICULTURAL TECHNOLOGY
- SOCIAL TECHNOLOGY
- MEDICINE
- NURSING
- PUBLIC HEALTH
- DENTISTRY
- DIGITAL ARTS AND SCIENCE

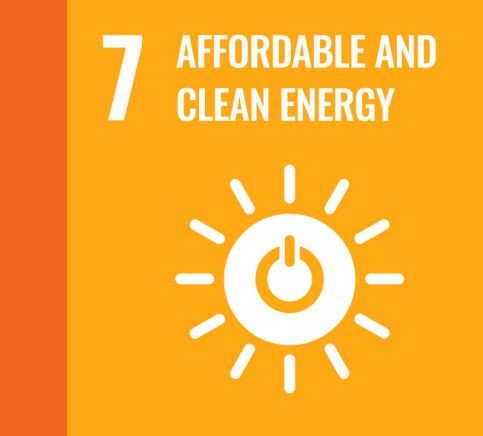


## SERVICE UNITS

- STUDENT ENTREPRENEURSHIP DEVELOPMENT ACADEMY (SEDA)
- TECHNOPOLIS, UNIVERSITY SCIENCE PARK
- SURAWIWAT SCHOOL
- SUT HOSPITAL
- SUT FARM

## CENTERS OF EXCELLENCE

- ENTREPRENEURSHIP
- AGRICULTURAL PRODUCT INNOVATION
- TECHNOLOGY AND INNOVATION FOR KORAT CHICKEN BUSINESS DEVELOPMENT
- MICROBIAL TECHNOLOGY FOR AGRICULTURAL INDUSTRY
- HIGH ENERGY PHYSICS AND ASTROPHYSICS
- ADVANCED FUNCTIONAL MATERIALS
- BIOMECHANICS MEDICINE
- BIOMASS
- ELECTROMAGNETIC WAVE APPLICATION
- INNOVATION FOR SUSTAINABLE INFRASTRUCTURE DEVELOPMENT





# International Programs

## UG PROGRAMS

- Civil Engineering
- Mechanical and Aeronautical Engineering
  - Plan A: Mechanical and Aeronautical Engineering (4 years in Thailand)
  - Plan B: 2+2 at University of Birmingham (UK) in Mechanical, Automotive, and Mechatronic & Robotic
- Petrochemical and Polymer Engineering
- Innovative Agripreneur
- Hospitality Technology Innovation (English Program)

## PG PROGRAMS

- Science
- Engineering
- Digital Technology
- Health Science
- Languages
- Coop Education

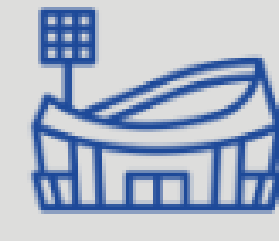
## CAMPUS FACILITIES



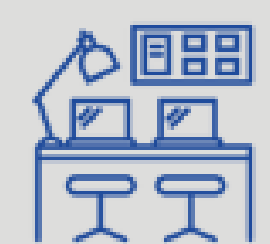
SWIMMING POOL



SPORTS AND HEALTH CENTER



STADIUM



LEARNING SPACES



SUT SMART FARM



SUT HOSPITAL



## INTERNATIONAL UG PROGRAMS

Program (4 years)

### Institute of Engineering

#### Civil Engineering

Accredited by international associations: TABEE, ABET

- Core courses, Elective courses
- Cooperative education, Capstone project

#### Mechanical and Aeronautical Engineering

- Plan A: 4 years in Thailand (Mechanical & Aeronautical)
- Plan B: 2+2 at University of Birmingham (UK) in Mechanical, Automotive, and Mechatronic & Robotic

#### Petrochemical and Polymer Engineering

- Support growth of industry in regions
- Design advanced functional & environmental friendly materials and processes

### Institute of Agricultural Technology

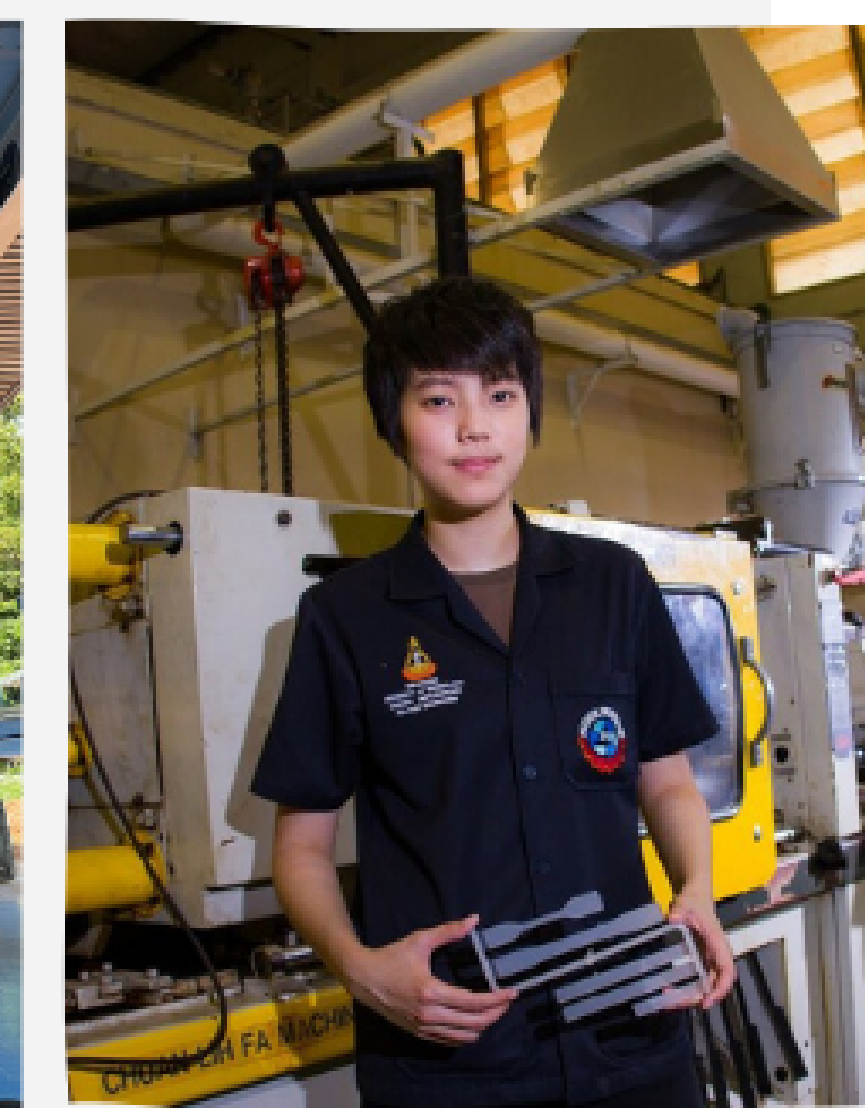
#### Innovative Agripreneur

- Core courses, Elective courses
- Cooperative education, Project

### Institute of Social Technology

#### Hospitality Technology Innovation

- Core courses, Elective courses
- Cooperative education, Project



Scholarships



UG Admission



Life@SUT



## INTERNATIONAL PG PROGRAMS

- Animal Production Technology
- Applied Mathematics
- Applied Physics
- Biochemistry & Biochemical Technology
- Biology
- Biomedical Sciences
- Biotechnology
- Cellular & Molecular Science for Biomedical Application
- Chemistry
- Civil, Transportation & Georesource Engineering
- Cooperative Education
- Crop Science
- Electrical Engineering
- English Language Studies
- Food Technology
- Geoinformatics
- Industrial Systems and Environmental Engineering
- Materials Engineering
- Mechanical & Process System Engineering
- Microbiology
- Physics
- Telecommunication & Computer Engineering
- Translational Medicine

## Program

### Master

- Plan 1.1 Thesis
- Plan 1.2 Thesis+taught courses
- Plan 2 Taught courses + independent study

### Double Program

- 2 years in Thailand at SUT
- 2 years in UK at University of Birmingham in Mechanical, Automotive, and Mechatronic & Robotic Engineering

### Doctoral

- Plan 1 Thesis
  - Plan 1.1 For a master degree holder
  - Plan 1.2 For a bachelor (honor) degree holder
- Plan 2 Taught courses + Thesis
  - Plan 2.1 For a master degree holder
  - Plan 2.2 For a bachelor (honor) degree holder

PG Admission



Scholarships



Contact us: Center for International Affairs



<https://cia.sut.ac.th>



[cia@g.sut.ac.th](mailto:cia@g.sut.ac.th)



CIA SUT

SUT Outlook



## STUDENT LIFE & OPPORTUNITIES

- International friends throughout the study
- Strong Entrepreneurship flagship programs
- Exchange programs, short courses, and experiential camps
- Cooperative education with international partnership institutions



## COOP INTERNATIONAL PARTNERSHIPS



### Social Innovation Camp #1

11th to 16th August 2022

@Kui Buri

You will get to work together to identify problems related to sustainability and climate change, spot opportunities to tackle social problems, develop new business ideas and models suitable for the context & present your innovative ideas. Teams are supported and coached by SUT professors, Thai startups, and business professionals throughout their time.

Just because it's hard doesn't mean it's impossible

## SUT GLOBAL COURSES



# Learning & LIVING

AT SURANAREE UNIVERSITY OF TECHNOLOGY



- Sports and health center
- Library
- Digitech building
- Laboratories
- Learning spaces
- Lecture halls
- SUT hospital
- Amphitheater
- Dormitory
- SUT farm
- Convenience stores
- Student clubs

### SUT GLOBAL CAMP

- **Global Entrepreneurship Camp**
  - 8-10 day program
  - IST 50 2410 Technopreneurship Course (2 credits)
  - Open to UG & PG students

Contact:

✉ [global.entrepreneurship.sut@gmail.com](mailto:global.entrepreneurship.sut@gmail.com)  
[seda@g.sut.ac.th](mailto:seda@g.sut.ac.th)

### Social Innovation Immersion

- One month program
- Open to UG & PG students
- IST50 2408 Social Innovation Development Course (2 credits)

Contact:

✉ [seda@g.sut.ac.th](mailto:seda@g.sut.ac.th)



### GLOBAL PROJECT BASED LEARNING

#### Global Project Based Learning (GPBL) Camp

- 7 day program (4 credits)
- ENG20 2020-1: Global Project Based Learning I (November)
- ENG20 3020-1: Global Project Based Learning II (March)
- ENG20 4020-1: Global Project Based Learning III (July)
- Open to UG & PG students
- Cost per head: 200 USD

**Cost includes:** Accommodation for 8 nights, breakfasts & lunches, field trip, airport pick-up & drop-off



### SUT GLOBAL COURSES

- **Biology**
- **Engineering**
- **Innovative Agripreneur**

- 1 trimester course (1-4 credits)
- Open to UG & PG students
- Online/onsite/hybrid program
- Course certificate
- Registration fee waive upto 4 credits for partner universities

✉ [cia@g.sut.ac.th](mailto:cia@g.sut.ac.th)

- **Aircraft Maintenance Technician (EASA A)**
- **Aircraft Maintenance Technician (EASA B1.1)**

- Joint certificate (SUT- Wefly)

✉ [int\\_eng@g.sut.ac.th](mailto:int_eng@g.sut.ac.th)

