

KYUNG HEE UNIVERSITY



TOWARDS
GLOBAL
EMINENCE



CONTENTS

KHU Vision	03
KHU at a Glance	
History	05
Why Kyung Hee University	06
Education & Research	
Education and Research in Figures	08
Undergraduate Programs	09
Graduate Programs	11
Internationalization	12
Internationalization in Figures	13
International Programs	13
International Student Support Programs	15
Accommodation	18
Four Seasons (Seoul/Global Campus)	20

KHU Vision

Towards Global Eminence

Kyung Hee University (KHU) has pursued the spirit of “Scholarship and Peace” as well as our founding principle of “creating a civilized world.” The university has developed remarkably, contributing to the fulfillment of a “cultural world for humanity” as a leader of the future of academics and the creator of common values for humanity. Over the past decade especially, we have witnessed notable growth and a rise in the university’s stature through forward-looking and adventurous endeavors in education, research, public service, and praxis.



KHU at a Glance



History

International Association of University Presidents (IAUP) was established under the leadership of Dr. Young Seek Choue (Founder of Kyung Hee University) with 4 other university presidents. Its first conference was held in Oxford, the United Kingdom.



The International Day and Year of Peace, initially proposed by Dr. Young Seek Choue, was unanimously approved in the UN General Assembly.

Kyung Hee University co-hosted World Youth Leaders Conference.




World Civic Forum and World Civic Youth Forum were held in Seoul to commemorate the 60th anniversary of the founding of Kyung Hee University.



Kyung Hee University co-hosted IAUP's 50th Anniversary Conference with Fairleigh Dickinson University in Oxford, the United Kingdom.



1949 Kyung Hee University was established.



1971 Kyung Hee Medical Center opened with 1,000 beds, integrating Western and Eastern medical traditions.

1979 Kyung Hee University Global Campus was established.

1981 The Graduate Institute of Peace Studies was established at the Gwangneung Campus.

1984

1995

1999 Kyung Hee University co-hosted the 1999 Seoul International Conference of NGOs.



2009

2011

- Humanitas College was established for liberal arts education.
- United Nations Academic Impact (UNAI)-Kyung Hee International Symposium was held at Kyung Hee University in celebration of the 30th anniversary of the UN International Day of Peace.



2015

2019 Kyung Hee University celebrated its 70th anniversary.



Why Kyung Hee University



Kyung Hee University has spearheaded the internationalization of higher education in Korea and Asia through wide ranges of study abroad programs such as student exchange programs, summer/winter short-programs, and faculty-led programs. Annually, Kyung Hee University sends more than 2,000 students abroad, the largest number of outgoing students in Korea, and invites more than 1,000 students from all around the world. Additionally, Kyung Hee University is home to more than 4,900 full-time international students of all levels. In addition, each year, more than 6,000 students from all over the world come to Kyung Hee University's language program to study Korean.

1

FRIENDLY ENVIRONMENT FOR INTERNATIONAL STUDENTS



- Ranked 1st in International Outlook among Korean Universities in 2024 Times Higher Education World University Rankings
- The largest number of international students in Korea, hailing from more than 100 countries alongside globally oriented domestic students.
- Provides a variety of international student support services and programs including buddy programs, academic and cultural activities, and field trips throughout the year
- Offers opportunities to take part in various international events such as conferences, workshops and special lectures by renowned faculty members and experts, including annual Peace BAR festival to commemorate the UN International Day of Peace

2

INTERNATIONALLY-RECOGNIZED HIGHER EDUCATION INSTITUTION

332 in 2024

QS World University Rankings (38th in Asia)
(6th among comprehensive universities in Korea)



35th in 2023

Times Higher Education Asia University Rankings
(5th among comprehensive universities in Korea)



42nd in 2023

Times Higher Education Impact Rankings
(2nd in Korea)



Ranked in

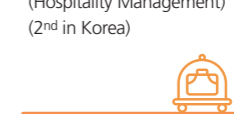
51~100 in 2023

QS World University Rankings by subject
(Development Studies)



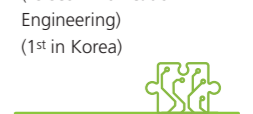
10th in 2023

Academic Ranking of World Universities by subject,
(Hospitality Management)
(2nd in Korea)



24th in 2023

Academic Ranking of World Universities by subject,
(Telecommunication Engineering)
(1st in Korea)



3

ADDITIONAL ATTRACTION



- A wide range of scholarship opportunities for international students
- A place where many international figures either studied or are studying including the 15th and 19th president of the Republic of Korea, Korean pop stars
- Beautiful and eco-friendly campuses (ranked as the 3rd most beautiful campus in East Asia in 2018 by Times Higher Education)
- An opportunity to study in one of the safest countries in the world
- Located in one of the most dynamic cities (Seoul and Suwon) in the world

Education and Research



Education and Research in Figures



College of Hotel & Tourism Management has played a key role in the development of the Korean Tourism Industry by fostering more than **10,000** professionals since its establishment in 1975.

College of Korean Medicine has been continuously ranked as the **NO.1** by various domestic and internationally-renowned organizations for its excellence in Korean Medicine program and its publishing of the world's largest Korean Medicine encyclopedia.



Kyung Hee Regional Innovation Center - Components and Materials for Information Display was selected by the Ministry of Education as part of the Priority Research Institute Program (**1st** Tier Program).

Humanitas College was established in 2011 as the **1st** of its kind in Korea. It is the embodiment of Kyung Hee University's resolution to revolutionize undergraduate education by transforming the process of received instruction into an active project to cultivate outstanding individuals who have a broad vision in spanning society, culture and science.

Kyung Hee benefited **\$674** million total for University Innovation Support Project funded by the Korean Government from 2019 to 2021.

Undergraduate Program

SEOUL CAMPUS

College of Humanities	Korean Language and Literature, History, Philosophy, English Linguistics and Literature, Applied English Linguistics and Translation Studies
College of Politics and Economics	Political Science and International Relations, Public Administration, Sociology, Economics, International Business and Trade, Journalism and Communication, International Commerce, Finance, and Investment
College of Management	Management, Accounting and Taxation, Big Data Analytics
College of Hotel and Tourism Management	Hospitality Management Culinary Arts & Food Design Management Tourism and Entertainment Global Hospitality & Tourism Management Culture & Tourism Industry Culinary Arts Management
College of Science	Mathematics, Physics, Chemistry, Biology, Information Display, Geography
College of Human Ecology	Child and Family Studies, Housing and Interior Design, Clothing and Textiles, Food and Nutrition
College of Medicine	Medicine
College of Korean Medicine	Korean Medicine
College of Dentistry	Dentistry
College of Pharmacy	Pharmacy, Oriental Pharmaceutical Science, Pharmaceutical Science
College of Nursing Science	Nursing
College of Music	Composition, Vocal Music, Instrumental Music
College of Fine Arts	Fine Arts · Korean Painting, Drawing and Painting, Sculpture
School of Dance	Korean Dance, Contemporary Dance, Ballet
Department of Global Eminence	Global Eminence - Global Leader, Global Business

Undergraduate Program

GLOBAL CAMPUS

College of Engineering	Mechanical Engineering, Industrial and Management Engineering, Nuclear Engineering, Chemical Engineering, Advanced Materials Engineering for Information and Electronics, Civil Engineering, Architecture Engineering, Environmental Science and Environmental Engineering, Architecture
College of Electronics and Information	Electronic Engineering, Biomedical Engineering
College of Software Convergence	Computer Engineering, Software Convergence, Artificial Intelligence
College of Applied Sciences	Applied Mathematics, Applied Physics, Applied Chemistry, Astronomy and Space Science
College of International Studies	International Studies, Global Korean Studies
College of Life Sciences	Genetic and Biotechnology, Food Science and Biotechnology, Oriental Medicine Biotechnology, Plant and Environmental New Resources, Smart Farm Science
College of Foreign Language and Literature	French, Spanish, Russian, Chinese, Japanese, Korean, Global Communication · English Language and Literature · English Culture
College of Art and Design	Industrial Design, Visual Design, Landscape Architecture, Textile and Clothing Design, Digital Contents, Postmodern Music, Theater and Film, Ceramic Arts
College of Physical Education	Physical Education, Sports Medicine, Golf Industry, Coaching, Taekwondo
The School of East-West Medical Science	East-West Medical Science
Major in Convergence	Global Engineering, Global Culture Technology, 4D Art, Art & Technology, Smart-farm Engineering

Graduate Program

Graduate School

Humanities and Social Sciences, Natural and Applied Sciences, Engineering, Arts and Physical Education, Medicine, Interdisciplinary Programs

Special Graduate Schools

Art and Fusion Design, Business, Education, International Legal Affairs, Journalism and Communication, Public Policy and Civic Engagement, Technology Management, Tourism, Graduate Institute of Peace Studies

Professional Graduate Schools

Pan-Pacific International Studies, East-West Medical Science, Physical Education, Law, Medicine, Dentistry



Internationalization



Internationalization in Figures

International Partners:
620 Partner Universities
in **84** Countries



Over **30%** of courses
are conducted in English
including English Track
degree program in the
fields of Management,
Hotel and Tourism
Management and others



8th in International
Outlook among
Korean Universities
in 2024 Times Higher
Education World
University Rankings



KHU is the **1st** Korean
University to offer a
Global Citizenship
Education program to
all students



42nd in 2023 THE
University Impact
Rankings (2nd in Korea)
11th in the world for
the Decent Work and
Economic Growth



Over **4,000** full-time
international students
from **100** different
countries



Over **1,800** outbound
exchange students
to more than **200**
partner universities
around the world each
year



Over **500** incoming
exchange students
from more than **40**
different countries
around the world each
year



International Programs

Exchange and Visiting Student Program

International students can take courses at Kyung Hee University either in Korean or English for up to one academic year. Only international students from the partner institutions are eligible for our exchange program with their tuition at Kyung Hee University waived under the mutual bilateral agreements. Students who are not from the partner institutions can still take courses at Kyung Hee University through our visiting student program, although they will be responsible for their tuition to Kyung Hee University. The visiting students must also follow their home institution's regulations regarding tuition payment for the time they are here.



Global Collaborative Summer Program



This program is offered every summer to provide courses taught by world-renowned scholars and professionals from international organizations, along with a variety of cultural programs. The program is offered in collaboration with participating universities and institutions including the University of Pennsylvania, University of Oxford, Peking University, the UN Department of Economics and Social Affairs (DESA), and the Conference of NGOs in Consultative Relationship with the United Nations (CoNGO).



Student Interview



Murakami Kanon, Japan
Undergraduate Student

"KHU has many classes for international students, so I was able to take classes without any burden even though I was not good at Korean at first. There are various programs for international students such as buddy programs and Korean Helpers, so I can make friends at KHU and enjoy cultural experiences while studying abroad."

UN/INGO Internship Program

The Global Academy for Future Civilizations runs the UN/INGO Internship Program to create a civilization of peace and co-existence as well as to cultivate global leaders for the 21st century. The program places students in internships that help them better understand global problems and enhance their education through hands-on work and research at international organizations. The program is based on cooperative relationships between Kyung Hee University and diverse international organizations including the UN Department of Economic and Social Affairs (DESA), the UN Economic and Social Commission for Asia and the Pacific (ESCAP), the UN Educational, Scientific and Cultural Organization (UNESCO), World Alliance of Citizen Participation (CVICUS), and the Conference of NGOs in Consultative Relationship with the United Nations (CoNGO).

Korean Language Program

Seoul Campus



Institute of International Education

The Institute of International Education (IIE) is a specialized language-teaching institute. In 1993, IIE first opened its Korean language program and was selected by the government as an official institute for teaching Korean to international students. Every year, over 6,000 students from more than 100 countries attend IIE. In addition to providing high-quality Korean language courses, the institute also offers special programs on culture and history of Korea, and opportunities to meet and make friends with Korean students.

Global Campus

Korean Language Program

Institute of Language Education

The Institute of Language Education (ILE) is a specialized language-teaching institute located in Global Campus. The ILE offers Korean language courses and cultural experience programs for undergraduate students and international students preparing to attend a Korean university, as well as those with other academic or personal language goals. In addition to the regular Korean language program, the ILE offers both a daytime and evening Short-Term Program focusing on practical language skills for everyday life in Korea.



Student Interview



Schwartz Julian, Germany
2021 Exchange Student

"Through the Buddy Program I got to know people from diverse cultures and made amazing experiences. I liked going to Busan and Jeju with my buddy and other exchange students."

International Student Support Programs

The Office of International Affairs organizes a wide range of cultural events and activities to foster friendship and social networking opportunities for international students. Through participating in cultural programs such as Korean cooking classes, temple stays, and field trips, students gain a greater understanding of Korean culture, lifestyle, and history.

Buddy Program for Exchange students

Global Ambassador - BUDDY

Global Ambassador brings together Korean students and international students to build friendship and foster cultural exchanges. Through participating in the programs and activities of the Global Ambassador, students can build an international network while gaining global experiences and learning about each other's cultures. Major activities include welcoming orientation, field trips, and get-togethers to foster mutual understanding.



Buddy Program for Full-Time International Students



The Division of International Students and Scholar Services organizes the cultural exchange "Buddy Program" each semester. The purpose is to provide experiences in Korea for international students and a chance for Korean and international students to learn from each other through cross-cultural exchange. Both Korean and international students are allowed to participate in this program.



Student Interview



Agdid Fatima Ezzahra, Morocco
2020-2021 Exchange Student

"KHU offers a warm and friendly environment that can make any exchange student feel at home. It's a beautiful place to call home away from home."

Cultural Experience Program for Exchange students

The Office of International Affairs actively organizes a range of cultural events and programs for exchange students. Key activities encompass a welcoming orientation, excursions to local historic sites, classes on Korean traditional handicrafts and cuisine, and program review contests. By offering these initiatives, the Office of International Affairs creates numerous opportunities for both international and Korean students to engage with each other and exchange cultural insights.



Career Development Program

Career Development Programs have been designed to help international students find domestic and overseas employment. Those programs include lectures on employment, image making, resume clinics, mock interviews, information sessions with employed KHU graduates, foreign language contests, and more.



Student Interview



Hao Xin, China
Master Student

"KHU runs exchange programs with many foreign universities, so I came to KHU as an exchange student in 2017. Since then, I fell in love with KHU. So, when I had to choose graduate school, I decided to come back to KHU. KHU is famous for its beautiful scenery and convenient facilities for every student. My life in KHU is really fun and meaningful now."



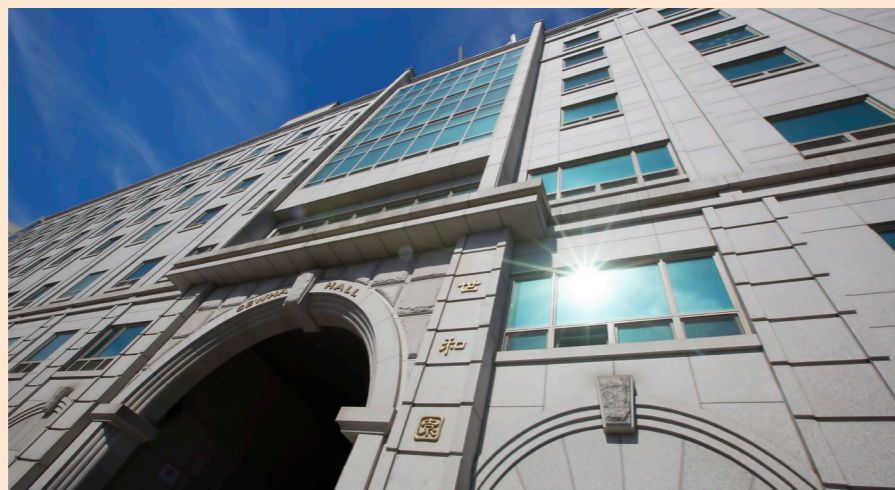
Accommodation



Seoul Campus

SEWHA HALL On-Campus Dormitory

Sewha Hall opened as an on-campus dormitory in early 2005 to accommodate 434 students. Every room is a twin bedroom with a bathroom, air conditioner, beds, wardrobes, bookshelves, desks and mini-fridge. Shared facilities include study rooms, seminar rooms, student lounges, laundry rooms, a convenience store and a fitness center.



Global Campus

WOJUNGWON On-Campus Dormitory

Renovated in 2021, Woojungwon consists of residential and commercial areas that can accommodate up to 1,060 students. Woojungwon has both single rooms and double rooms. Each unit is furnished with a bathroom, beds, desks, cabinets and landline phone. It is also supplied with a LAN cable for Internet access. A dining room, a lounge, a laundry room, a seminar room, and a meeting room are located on the first floor. Woojungwon is a designated dormitory for international students, and the dormitory office includes multilingual staff members.



THE SECOND DORMITORY On-Campus Dormitory

The Second Dormitory opened in March 2008 with state-of-the-art equipment and facilities. It consists of two buildings: Building A for women and Building B for men. The Second Dormitory can accommodate up to 2,300 students and every room is a double room with beds, desks and cabinets. Each room comes with a private bathroom, landline phone, LAN and air conditioner. There is a student cafeteria and various other facilities such as a coffee shop and a convenience store located on the first floor of Building A.



Four Seasons Seoul Campus

| Spring Grand Peace Hall



| Summer Seoul Campus scenery



| Autumn Seoul Campus scenery



| Winter University Administration Building

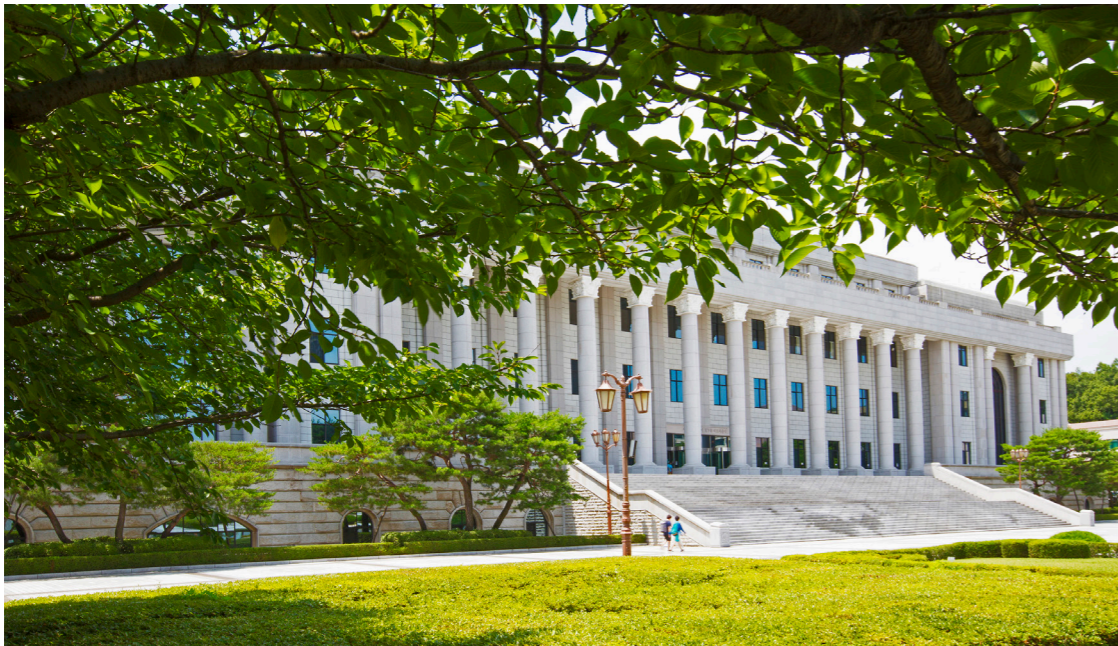


Four Seasons Global Campus

| Spring Seonseung Building



| Summer Central Library (University Administration Hall)



| Autumn Philosopher's Square



| Winter Peace Amphitheater





CONTACT US

University Website: <http://khu.ac.kr/eng/>

Office of International Affairs

Division of International Partnerships & Mobility Programs

Seoul Campus

Tel: +82 2 961 0031~2

Fax: +82 2 962 4343

E-mail: international@khu.ac.kr Website: <http://oia.khu.ac.kr>

Address: Office of International Affairs, Kyung Hee University,
26, Kyungheedae-ro, Dongdaemun-gu, Seoul, 02447, Republic of Korea

Global Campus

Tel: +82 31 201 3961~4

Fax: +82 31 201 3969

E-mail: international@khu.ac.kr Website: <http://oia.khu.ac.kr>

Address: Office of International Affairs, Kyung Hee University,
1732 Deogyong-daero, Giheung-gu, Yongin-si, Gyeonggi-do, 17104, Republic of Korea

Division of Global Admissions

Seoul Campus

Tel: +82 2 961 9286~7

Fax: +82 2 961 2230

E-mail: admission@khu.ac.kr Website: <https://iadmission.khu.ac.kr>

Address: Division of Global Admissions, Kyung Hee University,
26, Kyungheedae-ro, Dongdaemun-gu, Seoul, 02447, Republic of Korea

Global Campus

Tel: +82 31 201 3961~4

Fax: +82 31 201 3969

E-mail: ciss_gc@khu.ac.kr Website: <http://https://iadmission.khu.ac.kr>

Address: Office of International Affairs, Kyung Hee University,
1732 Deogyong-daero, Giheung-gu, Yongin-si, Gyeonggi-do, 17104, Republic of Korea