

OPEN YOUR MIND

32 LUT SUMMER AND
WINTER SCHOOLS

14 UP NORTH!

LAPPEENRANTA UNIVERSITY
OF TECHNOLOGY, LUT
LAPPEENRANTA, FINLAND

STUDY AT LUT

28 Doctoral
studies

30 Exchange
studies

8

ONE OF THE TOP
300 UNIVERSITIES
IN THE WORLD

20 Master's
studies



12 LUT – OPEN YOUR MIND

WWW.LUT.FI/ADMISSIONS
ADMISSION@LUT.FI

20 Master's studies

26 M.Sc. (Econ. & Bus. Adm.) studies

22 M.Sc. (Tech.) studies

28 Doctoral studies

30 Exchange studies

32 LUT Summer School

34 LUT Winter School

Master's programmes

- www.lut.fi/masters
- admission@lut.fi
- Tel. +358 40132 5239
+358 40738 1312

Exchange programme

- www.lut.fi/exchange
- incomingexchange@lut.fi
- Tel. +358 40738 1315

LUT Summer and Winter Schools

- www.lut.fi/summerschool
summerschool@lut.fi
- www.lut.fi/winterschool
winterschool@lut.fi
- Tel. +358 40578 6748



PHOTOS Ville Jahn, Vesa Laitinen, Teemu Leinonen, Jami Pankakari, Mikko Nikkinen

PRINTING PLACE Erweko Oy

PAPER COVER Edixon 300g/m², INNER PAGES Edixon 140g/m²

COVER Teemu Leinonen, Pasi Romppanen

MAKE-UP Karoliina Pesu

MODEL Krista Koivisto, LUT

Ever since it was founded in 1969, Lappeenranta University of Technology, LUT, has brought together technology and economics in a pioneering spirit.

LUT's strategy is: Trailblazer. Show the way. Never follow. At the core of the strategy are four global questions to which LUT is seeking answers. Are we burning everything out? Are we leaving humanity to suffer from the water it has spoiled? Will we bury our

future with our waste? Will we let Europe degenerate to the status of the world's backyard?

Our international scientific community consists of 6,500 students and experts. LUT's operation is solution-focused and characterised by "open your mind" thinking: crossing boundaries open-mindedly, together. We are one of the top 300 universities in the world (THE World University Rankings 2014-2015).

Lappeenranta University of Technology

Skinnarilankatu 34
53850 LAPPEENRANTA
FINLAND



LUT
Lappeenranta
University of Technology

SOLUTIONS

TO GLOBAL ENVIRONMENTAL AND ECONOMIC CHALLENGES

**WIND
ΛΟΥΒ
ΟΒΕΙ**

OPEN YOUR MIND.

Lappeenranta University of Technology

OPEN YOUR MIND -ATTITUDE

This attitude involves having interdisciplinary expertise, being solution-oriented, and possessing the ability to cooperate with other people and parties. Broadmindedness means discovering, questioning, and surpassing boundaries open-mindedly – together.

**DECADES OF
TRADITION
BRINGING TOGETHER
TECHNOLOGY
AND BUSINESS.**

GREEN FOR REAL - FROM WORDS TO DEEDS.

VALUES



**COURAGE
TO
SUCCEED**



**PASSION FOR
INNOVATION
THROUGH SCIENCE**



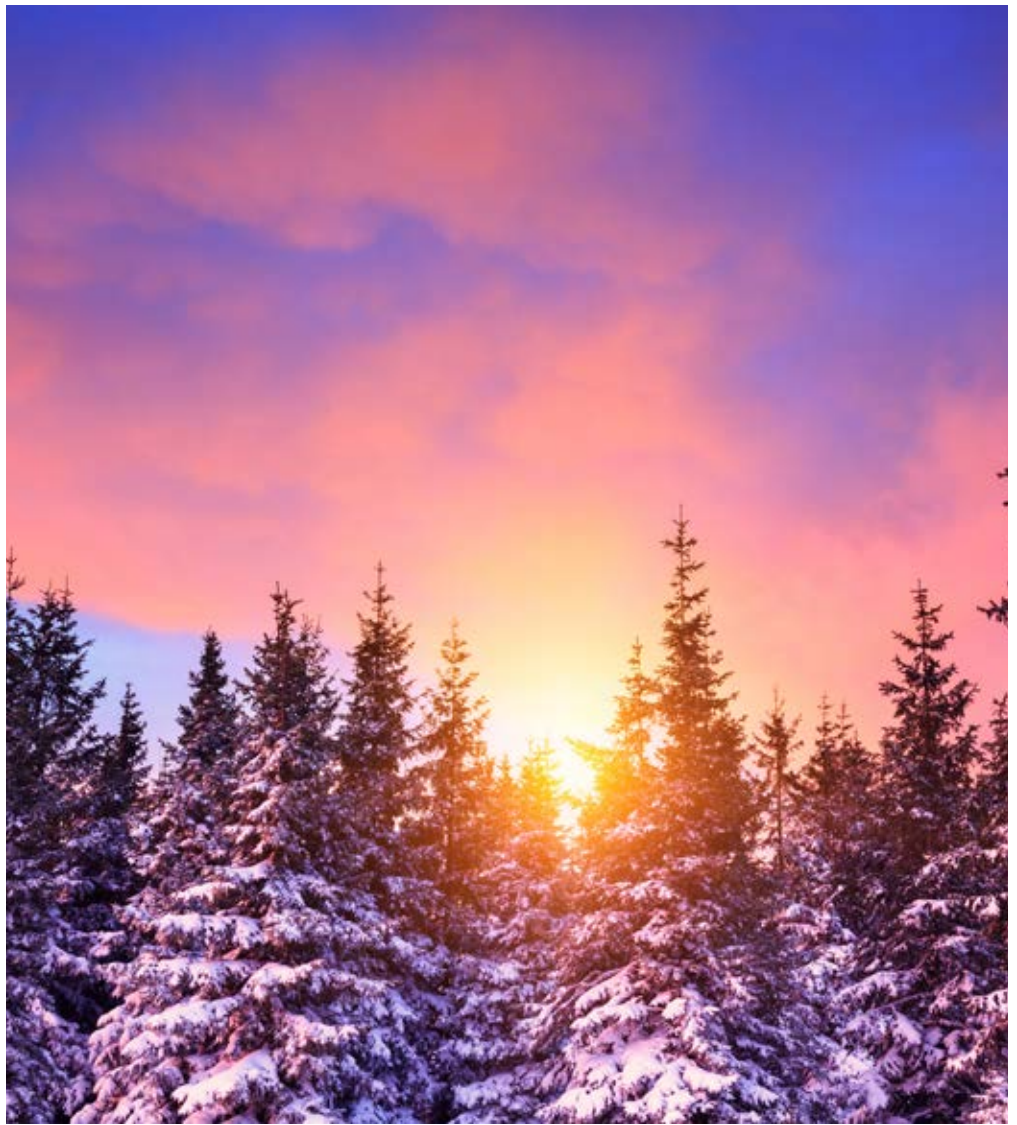
**WILL
TO BUILD
WELL-BEING**

Dealing with the global economic crisis and worldwide ecological challenges, such as ensuring a sufficient supply of energy, clean water and raw materials, calls for the expertise of

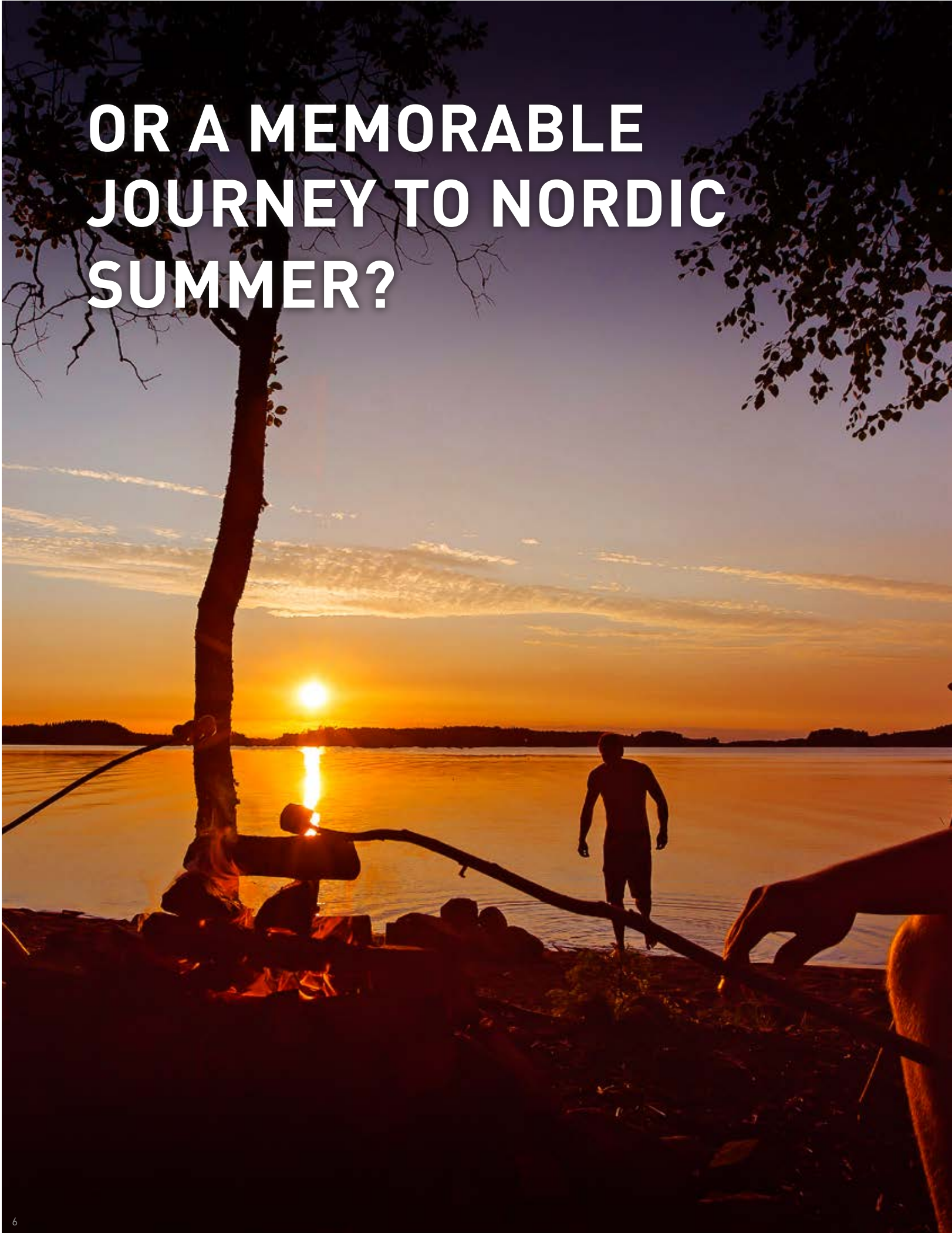
technology and business specialists. We at LUT create solutions and produce problem-solvers to address these challenges by means of our scientific research and academic education.

A wide, flat expanse of snow-covered ground, likely a frozen lake or a large field, stretches towards a line of trees in the distance. The sky is filled with soft, golden light from a setting or rising sun, with wispy clouds catching the light. The overall scene is serene and evokes a sense of a quiet winter wonderland.

**ARE YOU LOOKING FOR A
UNIQUE EXPERIENCE IN
WINTER WONDERLAND?**



OR A MEMORABLE JOURNEY TO NORDIC SUMMER?







QUALITY LABELS SPEAK FOR THEMSELVES

How would you rate the quality of teaching at the university?
LUT is a Finnish forerunner in degree programme accreditations,
which guarantee an international quality education.

LUT is a Finnish and Nordic pioneer in the international accreditation. Already 15 of LUT's degree programmes have passed the strict assessment of international accreditation organisations and have received a quality label.

Being granted a quality label shows both students and employers that the programme is of high quality. The accreditations also show that LUT is continuously developing its degree programmes in order to ensure that they are in accordance with international standards and the needs of students, business and the academic world.

INTERNATIONALLY ACCREDITED DEGREE PROGRAMMES

Accreditation is a guarantee of quality, international recognition and continuing development. Through its international accreditations, LUT promotes quality management and international comparability of the programmes as well as the mobility of the graduates.

HOW DOES THE ACCREDITATION PROCESS WORK?

- » The degree programmes describe and assess their own performance in relation to the criteria set by the accreditation organisation.
- » The assessment team familiarises itself with the self-assessment report.
- » The assessment team visits the university and interviews students and staff members.
- » The accreditation organisation makes the final accreditation decision on the basis of the opinion submitted by the assessment team.
- » The accreditation is valid during the limited period of time.

LUT'S QUALITY LABELS FOR THE DEGREE PROGRAMMES

EPAS QUALITY LABEL

- » Master's Degree Programme in International Marketing Management (LUT was the first Nordic university to receive a five-year accreditation for a degree programme).

EUR-ACE AND ASIIN QUALITY LABELS

- » Bachelor's and Master's Degree Programmes in Chemical Engineering
- » Bachelor's and Master's Degree Programmes in Computer Science
- » Bachelor's and Master's Degree Programmes in Electrical Engineering
- » Bachelor's and Master's Degree Programmes in Energy Technology
- » Bachelor's and Master's Degree Programmes in Environmental Technology
- » Bachelor's and Master's Degree Programmes in Industrial Engineering and Management
- » Bachelor's and Master's Degree Programmes in Mechanical Engineering (LUT was the first Nordic university to receive EUR-ACE and ASIIN quality labels accreditation for a degree programme)

WE ARE ONE OF THE 300 BEST UNIVERSITIES.

We are one of the world's 300 best universities, according to the Times Higher Education (THE) World University Rankings. We belong to the top two percent of the university world on a global scale.

www.thewur.com

”

Student is
a king whose
opinion is taken
into account.



OPEN YOUR MIND – BE ONE OF US

Taking care of the environment and well-being has been a growing concern and is now also considered as a serious business action. This leads to plenty of interesting and fascinating tasks, especially for engineering and business graduates, as well as doctoral graduates in these fields.

At LUT, we offer an education that is important both for individuals and the whole society. We educate experts who solve challenging economic, social and environmental problems – in a sustainable and competitive way.

Education is one of the biggest investments in your life. Our students' employment and the competitiveness of our degrees on the international level are very important to us. High-quality

teaching is a starting point for all our activities. I like to say that the student is a king whose opinion is taken into account in developing education in LUT.

At LUT, you can easily combine technology and business. This combination leads to innovations and entrepreneurship – the future of Finland.

We at LUT want to live the way we teach. We have built an internationally acknowledged Green Campus that shows how science, technology and business can be used to solve environmental problems and build a sustainable world – the world we think it should be.

Lappeenranta's attractiveness as a place to live and study has been growing during the past few years. The cityscape is very

beautiful and international, thanks to the university's multinational community with 67 different nationalities.

We are constantly developing and strengthening links to Europe and other parts of the world. At LUT, you can enrich your degree by completing part of your degree abroad.

In our scientific community of 6,500 students and experts, we raise problem-solvers who have the courage to passionately solve problems in a new way – the way that improves our well-being.

I invite you to be one of us.

Anneli Pauli
PRESIDENT, LUT



GREAT PLACE FOR CURIOUS MINDS

We at LUT encourage students to keep an open mind and be open to learn, unlearn and relearn. Stay curious. See learning as something fun. We will help you by providing an excellent learning environment with modern facilities and state-of-the-art teaching.

Studying at LUT is not only about theoretical lectures – the majority of courses include project-based assignments through which students can learn to apply their theoretical knowledge to solve problems – a necessary skill in a real working life.

We are proud to have the world's most satisfied students. In 2010, LUT has been ranked number one in an extensive International

Student Barometer (ISB) survey in which foreign students were asked how well the university met their expectations.

Want to hear more top facts? LUT is one of the world's 300 best universities, according to the Times Higher Education (THE) World University Rankings. Of the Finnish universities, LUT is the second best technical university and the third best of all universities in the country.

**So, want to get excellent prerequisites
for a successful career in the global marketplace?**

Join us.



TOGETHERNESS

Throughout LUT's existence, we have linked together technology and business. Our success stems from cooperating between the units of the university and from activities that cross the boundaries between scientific disciplines.

We at LUT create solutions together to deal with the global economic crisis and worldwide financial challenges. We are working together to build an economically, ecologically and socially sustainable world.

CONNECTED

Strong corporate relationships also have a direct impact on the quality of our degree programmes. Many of our Master's programmes have an executive board with members from public and private institutions. This ensures that our education is up-

to-date and valued by the employers. LUT board also has a strong representation of top-level executives from leading international companies.

START ME UP

Innovation and entrepreneurial thinking are highly valued at LUT. The possibility to combine business and technology gives our students a unique opportunity to build their future careers. At LUT, we try to inspire students to develop critical thinking and leadership skills to help them become future innovators.

Have a business idea and want to network with like-minded people? Get involved with different activities organized by the LUT Entrepreneurship Society, LUTES, which actively promotes entrepreneurship and helps students develop their ideas into businesses.

OPEN
YOUR
MIND.

LUT

LAPPEENRANTA UNIVERSITY OF TECHNOLOGY

DEGREES

Master of Science in Technology
(M. Sc., Tech.)

Master of Science in Economics and Business Administration
(M. Sc., Econ. & Bus. Adm.)

Doctor of Science in Technology
(D. Sc., Tech.)

Doctor of Science in Economics and Business Administration
(D. Sc., Econ. & Bus. Adm.)

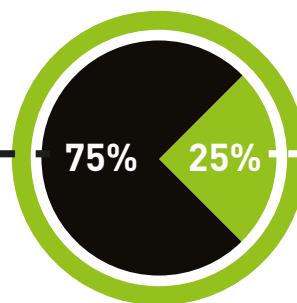
Doctor of Philosophy
(Ph. D.)

How to become
an LUT student?

Master, Doctoral, Exchange,
LUT Summer and Winter Schools
- 11 Master's programmes in English

TECHNOLOGY
STUDENTS

BUSINESS
STUDENTS



5500
STUDENTS

1000
STAFF

STUDY &
RESEARCH

TOGETHER.

WORK &
PARTY

NUMBER OF APPLICANTS

+90%

2008-2014



**INCREASING IN
ATTRACTIVENESS:**

the number of applicants to Master's programmes
more than doubled in recent years.

lut.fi



INTERNATIONAL UNIVERSITY



MORE THAN

200

**PARTNER
UNIVERSITIES**

MORE THAN

60

**NATIONALITIES
AT THE UNIVERSITY**

30%

**1ST-YEAR STUDENTS
FROM OTHER COUNTRIES**

8

**LANGUAGES
TO STUDY**

ENGLISH, FINNISH, SWEDISH, GERMAN,
FRENCH, SPANISH, RUSSIAN, CHINESE



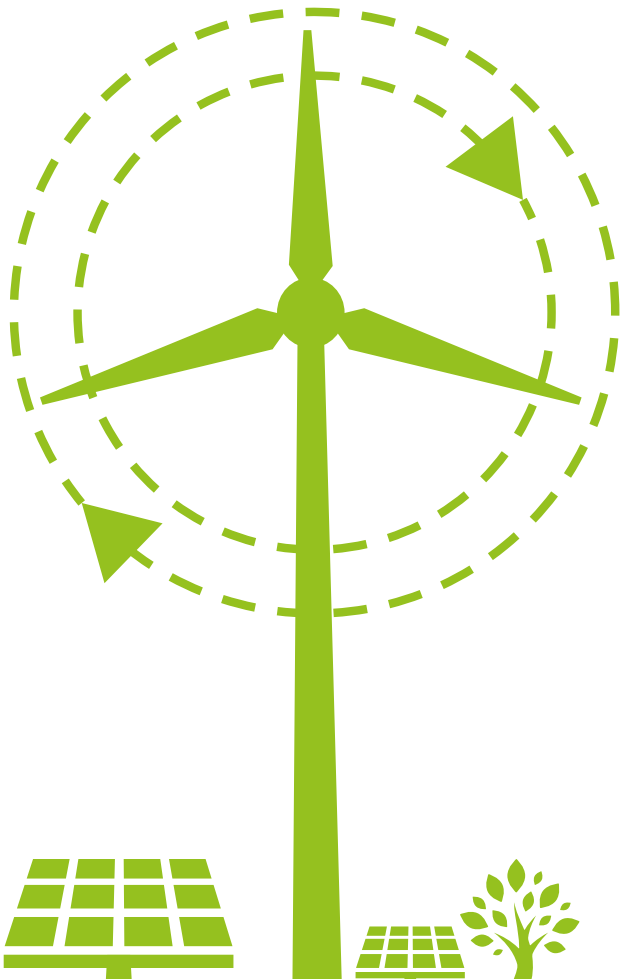
**CERTIFIED ENVIRONMENTAL
MANAGEMENT SYSTEM ISO 14001**
LUT IS THE ONLY ENVIRONMENTALLY
CERTIFIED UNIVERSITY IN FINLAND.



**SUSTAINABLE CAMPUS
EXCELLENCE AWARD 2013**
THE BEST CAMPUS IN THE EXCELLENCE
IN CAMPUS CATEGORY.



**THE FIRST SOLAR ECONOMY AND
WIND-POWER TECHNOLOGY
PROFESSORS IN FINLAND**



GREEN CAMPUS

LUT's Green Campus is a unique research and educational environment, where the university's expertise in energy is put to practical use.

**AT GREEN CAMPUS
WE ARE SHAPING
THE WORLD INTO WHAT
WE THINK IT SHOULD BE.**



UP NORTH!

Finland is a wealthy country that is consistently ranked as one of the top ten countries in the world for living standards, economic stability and educational system. All this, combined with the fact that Finland is one of the safest countries in the world, makes it an excellent place to come.

EDUCATION. One of the Finnish education system's major strengths is its ability to guarantee the same educational opportunity for everyone, regardless of social or economic background. Instead of competition and comparison, schools focus on support and guidance for the students as individuals.

INNOVATION. Finland is a country of innovation and technology – in 2014, it was ranked as Europe's most competitive country (World Economic Forum's The Europe 2020 Competitiveness Index) and the

world's fourth most innovative country (Global Innovation Index), ranking behind Switzerland (1), the United Kingdom (2), and Sweden (3). The main pillars of analysis were institutions, human capital and research, infrastructure, market sophistication, business sophistication, knowledge and technology outputs, and creative outputs.

CLEAN NATURE. Finland is a land of countless lakes, forests, fells and archipelagos – it is one of the most extensive and unspoiled natural



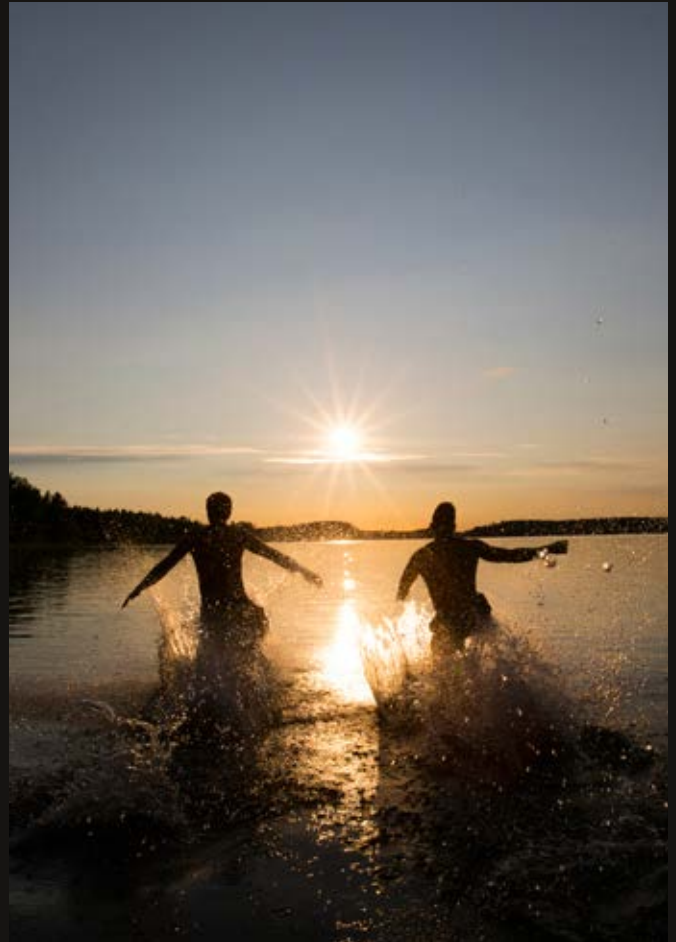
environments in Europe. It is also a country of contrasts, with the Midnight Sun in the summer and the Polar Night and Northern Lights in the winter.

HAPPINESS. Where do you think the happiest people live? According to the latest World Happiness Report, Scandinavian countries rank as the happiest. Finland's 7th place means that Finns are among the world's happiest nations.



More information

www.finland.fi
www.visitfinland.com



THIS IS FINLAND

CAPITAL: Helsinki

OFFICIAL LANGUAGES: Finnish and Swedish

POPULATION: 5.5 million

GOVERNMENT: Parliamentary democracy

CURRENCY: Euro (€)

AMAZING FACTS

- » There are 2.2 million saunas in Finland.
- » There are no public pay phones in Finland.
- » One-cent and two-cent coins are not used in Finland.
- » When driving in Finland, you must keep your headlights on at all times.
- » Finland has the least corrupt government in the world.
- » Finland created a National Failure Day in 2010 (to learn from mistakes and not repeat them).
- » Finns drink more coffee per person than anyone else in the world, (12 kg per year).
- » Finns host a whole range of odd competitions, including wife carrying, mobile phone throwing, and air guitar.



” LAPPEENRANTA

– QUIET CITY WITH A VIBRANT LIFE

Lappeenranta, a city of 72,400 residents and located in southeast Finland, combines a safe and small-town atmosphere with full-scale urban comforts.

LOCATION. It is situated in the midst of a stunning landscape at the southern end of Europe’s fourth largest lake, Saimaa, offering plenty of opportunities for outdoor sports and other leisure activities both in summer and in winter.

Lappeenranta embraces its historical position between East and West. Lappeenranta is both a geographical and an academic gateway from the European Union to Russia. As it stands, Lappeenranta is only about 220 kilometres from the third largest metropolis in Europe – St. Petersburg – and an equal distance to Helsinki, capital of Finland.

INTERNATIONAL UNIVERSITY CITY. Lappeenranta is an international university city with approximately 8,000 students on campus (LUT and Saimia University of Applied Sciences). Lappeenranta is an excellent place to live and study – small enough to feel at home and large enough to be stimulating.

GREEN FOR REAL. Lappeenranta is a forerunner in renewable energies and a clean living environment - the city is dedicated to energy-efficiency and sustainable development. In 2014, Lappeenranta was selected as one of the 14 best cities in the international WWF Earth Hour City Challenge, participating as the only city in Finland. All in all, more than 160 cities from 14 countries participated in the challenge, which measured actions addressing climate change.

HOW TO REACH LAPPEENRANTA? Lappeenranta is easy to reach, not only within Finland but also from Europe and Russia. Multiple daily trains take only 2 hours from Helsinki. The cheap airline Ryanair flies to Lappeenranta International Airport from Milan, Düsseldorf, and Barcelona. Fast Allegro train connections go four times a day to St. Petersburg in only 1,5 hours.



More information

www.livelappeenranta.fi/en
www.visitlappeenranta.fi/en



AMAZING FACTS

- » Lake Saimaa is listed as one of the great lakes around the world, according to the Wall Street Journal.
- » You can swim and go to sauna right in the city centre.
- » International airport.
- » You can go ice-swimming in the winter at the heart of the city by plunging through a hole on the surface of the frozen lake.
- » The biggest sandcastle in Finland is in Lappeenranta.
- » Lappeenranta is a pioneer in renewable energy and energy efficiency.





GREEN PROGRESS

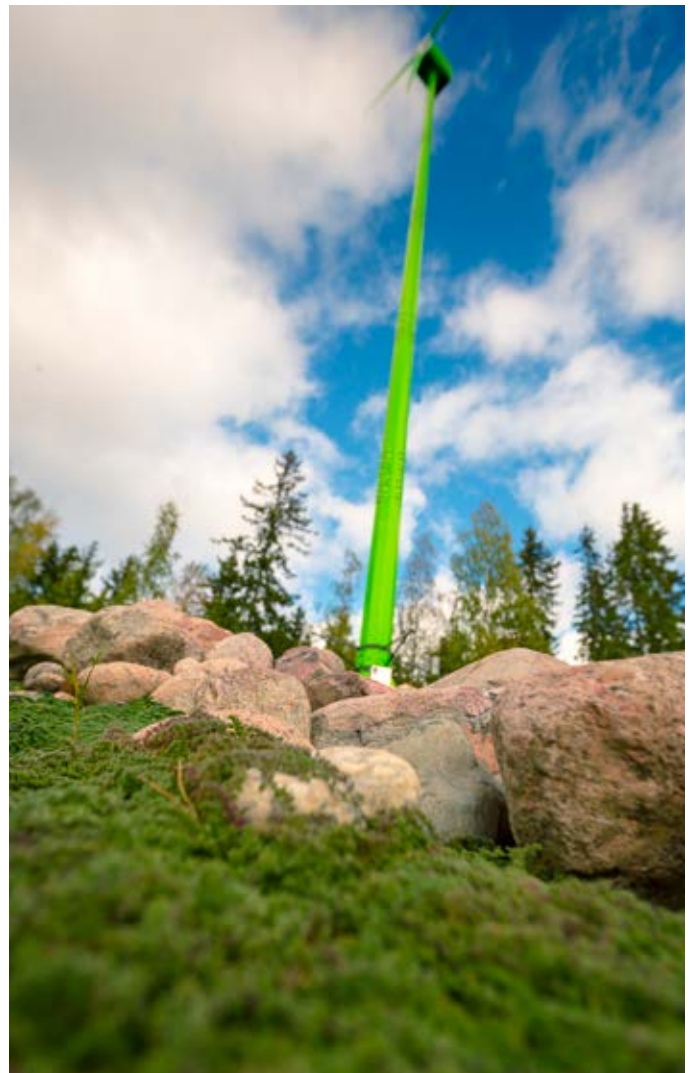
LUT's Green Campus is showing the way to a more energy-efficient future. LUT's Green Campus is a unique research and educational environment where the university's expertise in energy is put to practical use. This allows us to set an example of how science and technology can be used to solve environmental problems. On the Green Campus, we can build a world the way we think it should be.

RESPONSIBILITY FOR THE ENVIRONMENT IS UNIVERSAL. We have committed to taking environmental responsibility into account in all our activities, including research and teaching. We have a certified environmental management system, and we have set targets for minimizing the environmental impacts of energy consumption, use of natural resources, and traffic. Additionally, we are creating a positive environmental impact through research and teaching activities.

INTERNATIONALLY ACCLAIMED. In recognition of our expertise, LUT was awarded the best campus in the Excellence in Campus category in the International Sustainable Campus Network competition in 2013. The award in the category for Excellence in Campus was given based on actions and evidence of promoting sustainable development and green technology in a concrete way. Green Campus combines the science, academic education, and the social duties of LUT in the most advanced way.

LUT SHOWING THE WAY. The infrastructure of the Green Campus is utilised in research as well as in teaching activities and demonstrations. It allows our students to have sustainable development at their fingertips in a concrete way. The Green Campus is much more than an energy-generating project. The campus area as a whole is being refurbished so that it can be made greener and more enjoyable.

GREEN TRANSPORTATION. Electric transportation is being developed and studied at the LUT Green Campus in many ways. Electric transportation brings out our expertise in green energy and technology as a visible part of urban everyday life, and it promotes the region's economic and technological development and sustainable well-being. Both cars and bicycles are already visible in city traffic. And in the future, traffic will also be complemented by the hybrid bus.



More information
www.greencampus.fi/en



LUT MASTER'S STUDIES

LUT offers 11 Master's programmes, including 18 major subjects taught in English. Each year we accept about 200 international students to our Master's programmes.

The scope of each Master's programme is 120 ECTS credits, to be completed within two years of full-time study.



HOW?

Start the application process by following the instructions at www.lut.fi/masters.



WHEN?

Annual application period. Studies start in August/September.



ELIGIBILITY?

Appropriate Bachelor degree
Verified English language skills*

* See detailed instructions on language test requirements at www.lut.fi/masters.

LAPPEENRANTA UNIVERSITY OF TECHNOLOGY Master's programmes	
M. SC. (TECH.)	M. SC. (ECON. & BUS. ADM.)
Chemical and Process Engineering Computational Engineering and Physics Computer Science Pervasive Computing & Communications for Sustainable Development Energy Technology Global Management of Innovation and Technology Mechanical Engineering	International Marketing Management (MIMM) Strategic Finance and Business Analytics (MSF) Strategy, Innovation and Sustainability (MSIS) Supply Management (MSM)

MASTER OF SCIENCE IN TECHNOLOGY

M.Sc. (Tech.)

CHEMICAL AND PROCESS ENGINEERING

The programme gives students sufficient scientific and technological knowledge for a career in chemical and process engineering in different fields of the process industry. The major subject of the programme, **Sustainable Process Engineering**, includes courses in product, process and plant design with goals of sustainability, innovativeness and interdisciplinary methodology.

Career prospects: The skills of chemical engineers are increasingly in demand outside the traditional process industry. Graduates can move to careers in chemical and process engineering in different fields of industry in both the business and public sectors related to the chemical, biochemical, metallurgical and forest industries. Duties typically include R&D, design, and plant operation.

www.lut.fi/chemicalengineering



COMPUTATIONAL ENGINEERING AND PHYSICS

Technological development, new innovations and sustainable progress rely on mathematical and scientific skills. The Computational Engineering and Physics programme educates experts to reshape processes in modern industries. The programme is internationally accredited by ECMI – the European Consortium for Mathematics in Industry. The programme offers studies in the three major subjects.

Intelligent Computing focuses on computer vision systems and robotics contributing to the current trends in automation.

Technical Physics focuses on materials physics, semiconductors, superconductors, spintronics and optical measurement technologies.

Technomathematics includes modelling of industrial and environmental processes, fuzzy systems, and developing mathematical methods.

Career prospects: The programme provides an extensive professional foundation for careers in industrial R&D as well as the development of new products and processes for future technological solutions.

www.lut.fi/csp

COMPUTER SCIENCE

Computer Science programme trains experts in software development, its processes, methods, and tools. Graduates of the programme are able to apply modern design techniques and methods in daily software engineering as well as design, model and implement applications and services for various environments. The programme's major subject is **Software Engineering**.

Career prospects: Graduates of the programme can move to careers in design, development and maintenance of information processing systems, software and services, product development, and consulting.

www.lut.fi/computerscience



PERVASIVE COMPUTING & COMMUNICATIONS FOR SUSTAINABLE DEVELOPMENT (PERCCOM)

The programme combines Advanced Information and Communication Technologies (ICT) with environmental awareness to enable world-class education and unique competences for ICT professionals who can build cleaner, greener, more resource- and energy-efficient cyber-physical systems. This programme is jointly developed and organised by four high-quality universities. During the four semesters, the students move as a single cohort.

Students start their first semester at **University of Lorraine (France)**. The second semester, the cohort is at **LUT**, and the third semester is at **Luleå University of Technology (Sweden)**. The last semester is dedicated to a thesis component and can be undertaken during the training period either in a private company or in one of the laboratories/departments of the different universities involved in the Master's programme.

www.perccom.eu

ENERGY TECHNOLOGY

The programme concentrates on training the highly skilled and motivated professionals to take up the challenge of new supplies of affordable sustainable energy. We are convinced that by educating and training globally-minded students, we have the opportunity to affect the entire energy sector. The programme offers five major subjects.

Bioenergy Technology focuses on bioenergy production and refining technologies, bioenergy end-use technologies, and the international trade in biofuels.

Electricity Market and Power Systems focuses on Electricity Trading and Electric Power Systems.

Industrial Electronics offers a comprehensive understanding of electrical drives technology including the inverter, electrical motor or generator, as well as the mechanical load.

Nuclear Energy Engineering studies include the design, operation and basic structures of nuclear power plants, the modelling and optimisation of nuclear systems, radiation and nuclear safety, and radioactive waste management.

Sustainable Technology and Business combines technology, management and development topics in the areas of energy production, industrial and community by-product flows, environmental management and economics, and green chemistry.

Career prospects: Graduates of the programme can apply for jobs in different branches of industry and society. Jobs and careers include specialist tasks, design and product development, production and operation, management, sales and marketing, research and education, and positions in public authorities and professional organizations.

www.lut.fi/energytechnology



GLOBAL MANAGEMENT OF INNOVATION AND TECHNOLOGY (GMIT)

The programme is designed for students with a profound engineering background who aim to take on leadership positions in industrial and technology-based organisations. The programme integrates technological knowledge and management skills and offers a wide variety of perspectives on the management of innovations and technology in the international environment. The focus is on technology management and commercialisation,

product and technology strategies, corporate venturing and international business.

Career prospects: Graduates can apply for positions such as export managers, key account managers, managers of logistics, controllers, analysts, business application specialists, operative purchasers, technology innovation managers.

www.lut.fi/gmit

MECHANICAL ENGINEERING

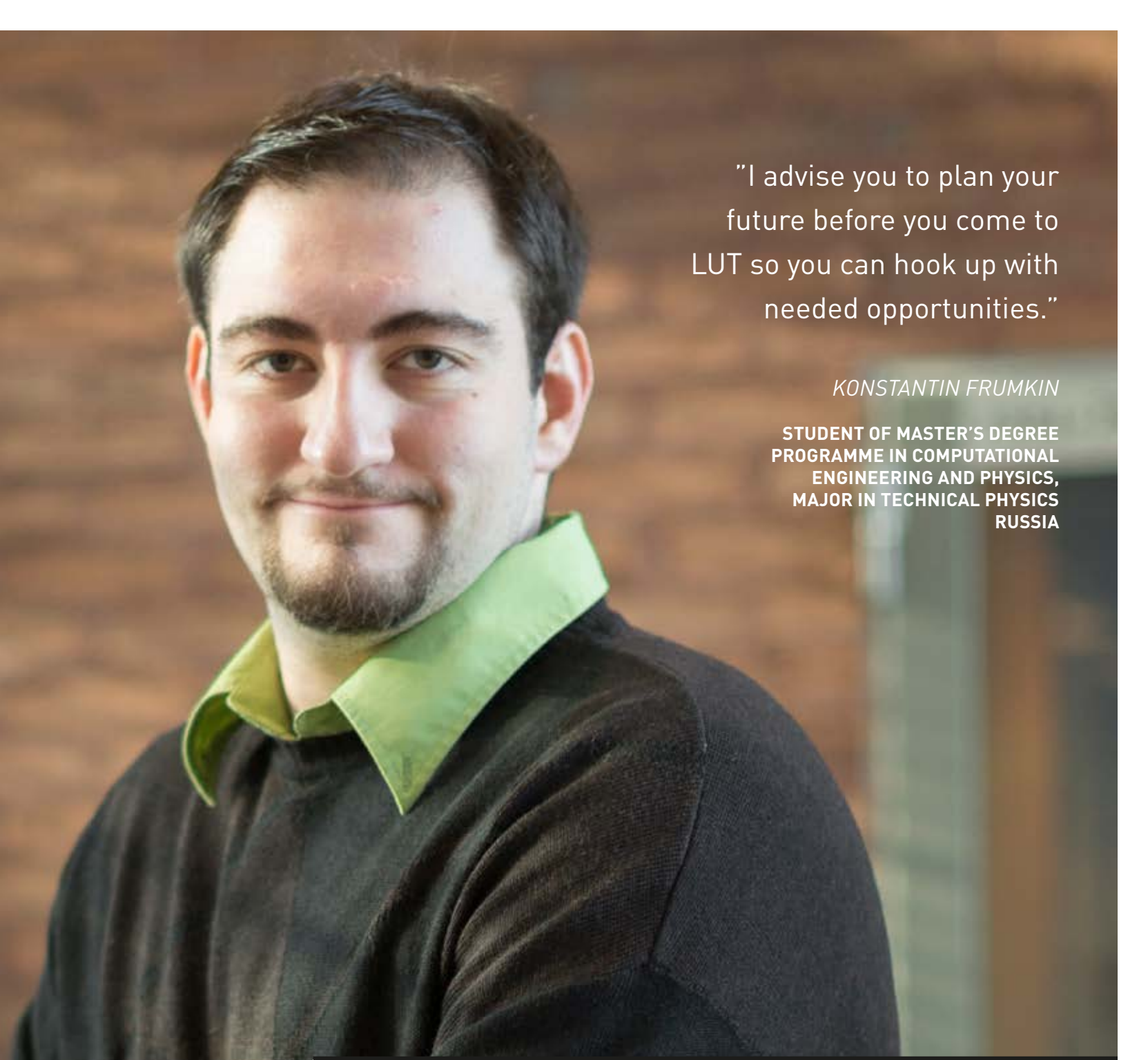
Modern engineering is a combination of innovative, purposeful, and creative product development, a wide range of computer-aided design technologies, and techno-economically efficient production methodologies. During their studies, students will find new and sustainable solutions to fulfil the needs of science, business, and society. The programme offers two major subjects.

Design and Manufacturing focuses on future product design and production technologies. The programme aims to provide in-depth knowledge in design or production-related areas, such as machine design, steel structures, welding technology, laser technology and production, and sheet metal technology.

Packaging Technology focuses on packaging materials, converting and packaging technologies, and the skills needed in the entire packaging chain.

Career prospects: Graduates can move on to careers in product development and design, project management in design, and production. The program provides a professional foundation for constructive design and production-oriented tasks in different areas of industry.

www.lut.fi/mechanicalengineering

A portrait of a young man with dark hair and a goatee, wearing a dark sweater over a light green collared shirt. He is looking directly at the camera with a slight smile. The background is a blurred brick wall.

“I advise you to plan your future before you come to LUT so you can hook up with needed opportunities.”

KONSTANTIN FRUMKIN

**STUDENT OF MASTER'S DEGREE
PROGRAMME IN COMPUTATIONAL
ENGINEERING AND PHYSICS,
MAJOR IN TECHNICAL PHYSICS
RUSSIA**

”

COMBINE YOUR TECHNOLOGY STUDIES WITH BUSINESS EDUCATION

I had come to LUT as a double-degree student in order to extend my life experience in an international way. Before I came for studying, I was thinking that it's a good opportunity that opens many ways for self-development and career perspective. And this was true. Studying at LUT offers plenty of opportunities to combine your technology study with business education or whatever you are interested in.

I advise you to plan your future before you come to LUT so you can hook up with needed opportunities. Now I am opening my own company in Lappeenranta – MyPlace. It might be much more difficult without the help of the LUT Entrepreneurship Society, LUTES, which is great place for you to start to develop your business ideas.

MASTER OF SCIENCE IN ECONOMICS AND BUSINESS ADMINISTRATION

M.Sc. (Econ. & Bus.Adm.)

INTERNATIONAL MARKETING AND MANAGEMENT (MIMM)

The programme gives advanced tools to analyse and manage challenges in an international marketing environment that is global, turbulent and hypercompetitive. The focus of the programme is on the management of global knowledge-intensive innovation activities from the marketing perspective.

Career prospects: Graduates can find future careers among a broad range of firms and sectors such as marketing, international business, product development, sales, logistics, international service business, consulting, and marketing research.

www.lut.fi/mimm

STRATEGIC FINANCE AND BUSINESS ANALYTICS (MSF)

The programme integrates corporate finance, strategy research, international financial markets, and business analytics, providing expertise in the strategic and financial management of global corporations. The combination of these four important areas makes the programme unique, merging theoretical and practical knowledge in modern finance.

Career prospects: Graduates of the programme can move on in their careers in financial management in both global corporations as well as in local SMEs.

www.lut.fi/msf

STRATEGY, INNOVATION AND SUSTAINABILITY (MSIS)

The programme focuses on developing an understanding of the modern business environment, where economic values need to be created in a way that simultaneously creates value to the society in a responsible way.

Career prospects: Graduates are ready to work in global companies. The programme provides additional skills to operate in the growing Russian market.

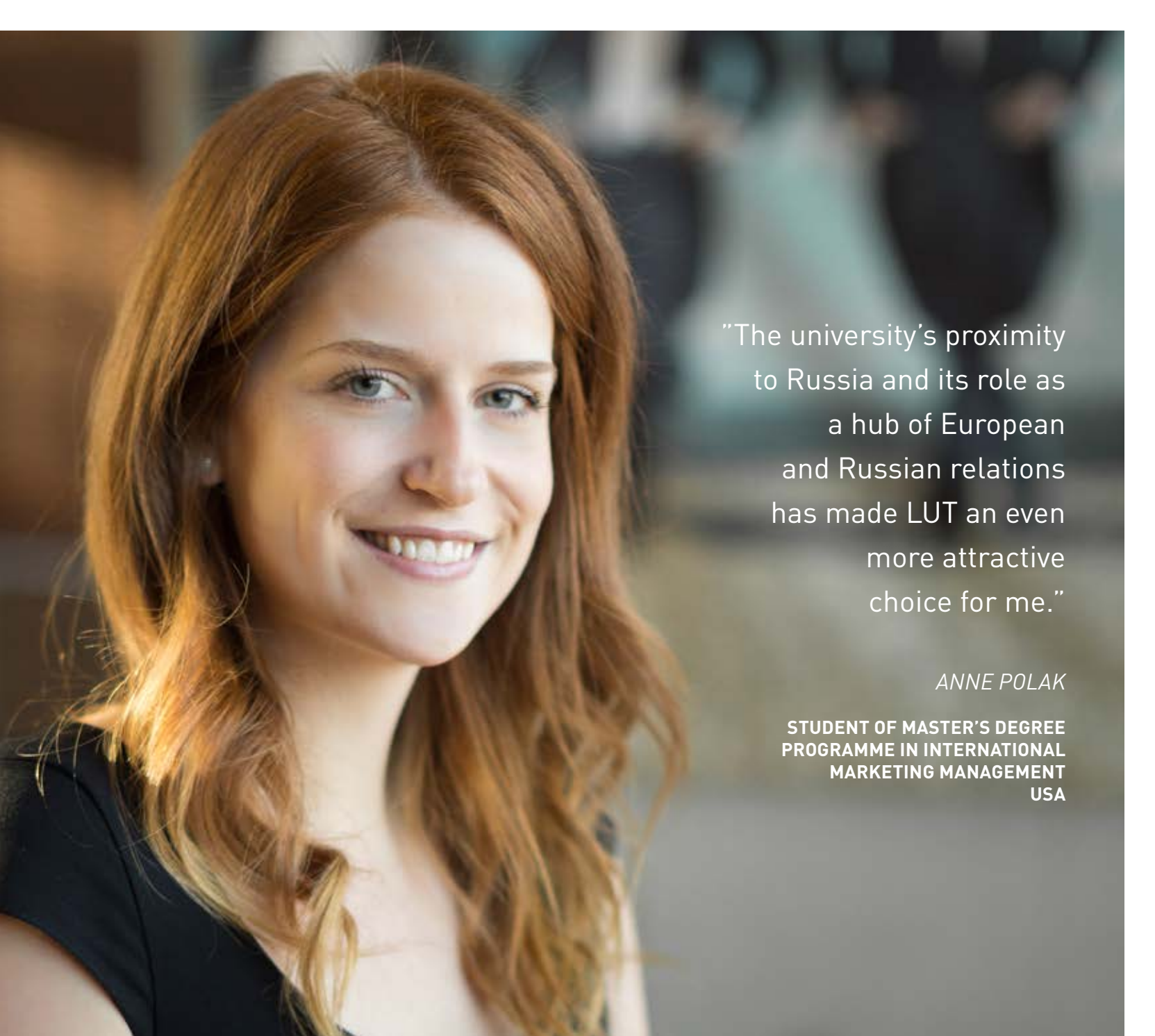
www.lut.fi/msis

SUPPLY MANAGEMENT (MSM)

The programme focuses on the challenges of global sourcing, strategic supply management, and cost effectiveness of a firm. The programme develops special skills and competencies in supply management and provides tools to explore and find responsible sources from global supply networks.

Career prospects: Graduates can find management positions in the fields of supply management, international business, logistics, supply chain management and consulting. Examples of positions include global sourcing director, supply manager, category manager and strategic buyer.

www.lut.fi/msm



“The university’s proximity to Russia and its role as a hub of European and Russian relations has made LUT an even more attractive choice for me.”

ANNE POLAK

**STUDENT OF MASTER’S DEGREE
PROGRAMME IN INTERNATIONAL
MARKETING MANAGEMENT
USA**



THE PROGRAMME MATCHED MY INTERESTS PERFECTLY

I chose to get my Master’s degree at LUT because of the unique business program that the university offers. The Master’s in International Marketing Management (MIMM) programme is perfectly tailored to fit my academic interest. It reflects LUT’s combination of specialties in business as well as technology and innovation. In addition, the university’s proximity to Russia and its role as a hub of European and Russian relations has made LUT an even more attractive choice for me.

There’s also a lot that can be said about the quality of student life at LUT. Never before have I been part of such an international and diverse community of students and professionals. For me, this has probably been the best part of studying at LUT, and it has had a tremendous impact on my learning experience here in Lappeenranta.



DOCTORAL STUDIES

Doctor of Science in Technology
D.Sc. (Tech.)

Doctor of Science in Economics and Business Administration
D.Sc. (Econ. & Bus. Adm.)

Doctor of Philosophy
Ph.D.

LUT is one of the leading scientific players in its areas of expertise in Finland and is considered a credible and attractive partner by the international scientific community.

We specialize in internationally high-level scientific research. Our doctoral programmes cover all the university's fields of science. LUT conducts research with the aim of producing new knowledge that meets international standards. The mission of our research is to produce scientific papers that are published in high-level international scientific journals.

Our researchers' expertise is based on in-depth mastery of theory combined with practically oriented experimental work in cutting-edge laboratories. Business and industry representatives are involved in nearly all research projects.

LUT offers a number of excellent opportunities to complete a doctoral degree. Doctoral programmes include doctoral studies and writing a doctoral dissertation. Doctoral studies in one of our doctoral programmes – including writing a doctoral dissertation – are to be completed within four years of full-time study.



More information

www.lut.fi/doctoralstudies



EXCHANGE STUDIES

An overseas study experience brings many benefits to students. During the exchange, you experience new cultures, learn a new language, meet new friends from all around the world and grow personally.

EXCHANGE STUDENTS. LUT has over 200 partner universities around the world. Every year we welcome approximately 220 exchange students coming mainly via the Erasmus+ programme. There are also bilateral exchange agreements between universities as well as some free movers.

COURSES. During the exchange, you can study business and technology courses. We offer an International Business and Technology Management programme (IBTM) that combines business and industrial engineering topics both at the Bachelor's and Master's levels. You can also study Master's level technology courses in various fields.

APPLICATION. Applications are taken twice a year, and student can choose whether to come for the full academic year or for one semester.

EXCHANGE EXPERIENCE. LUT's international environment, personalized approach to education and student-centered community ensure that you will have a unique and memorable study-abroad experience. The location of the campus ensures the perfect combination of academic study, student life and recreational activities. Different cultural theme parties and get-togethers are arranged to make sure everybody has a good time.



More information
www.lut.fi/exchange

Exchange studies in English

IBTM - International Business and Technology Management programme

- Focus on
- » cross-cultural aspects
 - » emerging economies
 - » finance
 - » innovation management
 - » international business
 - » international marketing management
 - » technology management

Technology

- » Chemical and Process Engineering
- » Computer Science
- » Electrical Engineering
- » Energy Technology
- » Environmental Technology
- » Intelligent Computing
- » Mechanical Engineering
- » Technical Physics
- » Technomathematics

In addition, students can take different language courses.



**2014 TOP 10 COUNTRIES
WHERE EXCHANGE
STUDENTS COME FROM**

- France**
- Germany**
- Russia**
- Spain**
- Brazil**
- China**
- Belgium**
- Hungary**
- Poland**
- South Korea**



LUT SUMMER SCHOOL

Are you looking for a unique experience in summer? What about spending an awesome time at the LUT Summer School? We invite you to join us in summer and gain an in-depth understanding of contemporary relevant topics in business and technology, all the while experiencing the beauty of Finland in the summer!

COURSES. The LUT Summer School is a four-week academic event offering intensive Master's-level courses in the field of technology and business. Lecturers at the LUT Summer School include academic staff from LUT and international guest lecturers from the USA, Europe, and Asia. The LUT Summer School offers you an excellent opportunity to become acquainted with the wide range of academic opportunities as well as student life at LUT.

With a wide variety of subject areas to choose from, you are sure to find something that suits your interests and needs. You can select one course or combine courses to build your own study schedule. Teaching blends classroom sessions with a series of theme-related group assignments that will extend your knowledge of chosen subjects.

MORE THAN STUDYING. We want to ensure that each student makes the most of the time spent here by arranging a very extensive, action-packed social programme. Students attend numerous traditional Finnish sauna evenings, go on a cruise on the beautiful Saimaa, go nightclubbing, etc. We also offer the opportunity to broaden your cultural experience by arranging a weekend trip to St. Petersburg.

BUSINESS ASPECT. In addition to academic learning, we want to bring business aspects to the programme – we arrange company visits in the Helsinki and Lappeenranta regions, and we invite company representatives to LUT.



TIME JULY–AUGUST
DURATION 4 WEEKS



TOPICS

Innovation Management Sustainability
Strategic Management Energy Technology
Systematic Creativity Solar Economy
Business in Russia



More information
www.lut.fi/summerschool

STUDENTS
FROM

15

DIFFERENT
COUNTRIES





LUT WINTER SCHOOL

Are you looking for a winter experience in a winter wonderland? What about spending an awesome time at the LUT Winter School? Here you have an opportunity to learn and think about the relationship between economy, technology, and cultural aspects while increasing your intercultural competence, all the while exploring the breathtaking scenery of the beautiful Finnish winter!

COURSES: During the six-week program, you can study both period-long and intensive courses on the Bachelor's and Master's levels. You study with other winter school participants as well as other LUT degree and exchange students. The programme offers both subject courses as well as a Finnish language course.

OTHER PROGRAM: The LUT Winter School is not only about studying. Social events will enable participants to get to know the Finnish culture, and learn about other cultures by interacting with students from different cultural backgrounds. You have an opportunity to experience something that you cannot do anywhere else – the traditional Finnish sauna with a swim in an icy pool, walking on the frozen lake and downhill skiing!



TIME JANUARY–FEBRUARY
DURATION 6 WEEKS



INTENSIVE or
PERIOD-LONG courses



More information
www.lut.fi/winterschool



”

A truly international spirit at LUT welcomes a lot of foreign students: here is the place for you to practice languages and make friends from all over the world.





KEEP FOLLOWING YOUR OWN PATH

I was studying at LUT School of Industrial Engineering and Management in 2012-2014. Currently I work in the field of telecommunications at Ericsson.

Previously, during my Masters' studies, I took part in two joint study programs with Finnish universities. In addition, I have spent a few of my holidays in this beautiful country and I enjoyed both studying and living there. So when the opportunity came, I went for a double-degree program at Lappeenranta University of Technology without any hesitation and I never regretted it later.

LUT provides plenty of opportunities for studies and leisure with a wide choice of study courses, social events and free time activities. Student culture plays a great role; these traditions are respected, carefully inherited and very appreciated. A truly international spirit at LUT welcomes a lot of foreign students. Here is the place for you to practice languages and make friends from all over the world. Study methods and resources are rich and versatile, supporting your progress in many different ways.

My advice to future potential students: find your own path – something you want to do in your life – and keep following it during your studies. And remember to always try something new!

The friendly atmosphere and community spirit made my studies at LUT unforgettable and a very positive experience. The Master's Degree programme at LUT expanded my area of expertise towards technical disciplines, supported my passion for science, and made it possible to land my dream job at Ericsson.



Maria Kononova

LUT alumnus, Russia

Innovation and Business Development
Ericsson

”

I had never experienced such a strong student community spirit, such dynamic teaching and such a close relationship with professors.





GRADUATES NEED TO STAND OUT

I often get asked how I ended up studying and working in Finland, as if a decision that big was explainable in a couple of sentences. The truth is, choosing a destination country and university is a very complex and time-consuming task and one that has to be done right!

I decided to travel all the way from Colombia because I found in the MIMM programme at LUT an unparalleled opportunity, and what I encountered upon arrival was, to say the least, as great as I expected. Never had I seen such a strong student community spirit, such dynamic teaching and such a close relationship with professors – something that shows you that LUT has earned its reputation with much more than excellence in research.

Having graduated from LUT has undoubtedly opened doors for me. In challenging times like these, graduates need to stand out with each and every line on their CVs. Mine had a prestigious and internationally accredited Master's degree as its corner stone. Hard work, perseverance and resilience did the rest.

I am working at Rovio as a Fan Engagement/Community manager. I utilize the relationship marketing approach that I studied in my Master's thesis to develop the Angry Birds brand and other Rovio brands across Rovio's social media channels. As part of my duties, I communicate with more than 27 million Angry Birds fans on Facebook and I run engaging social media marketing campaigns.

>> Juan Manuel Gaona León

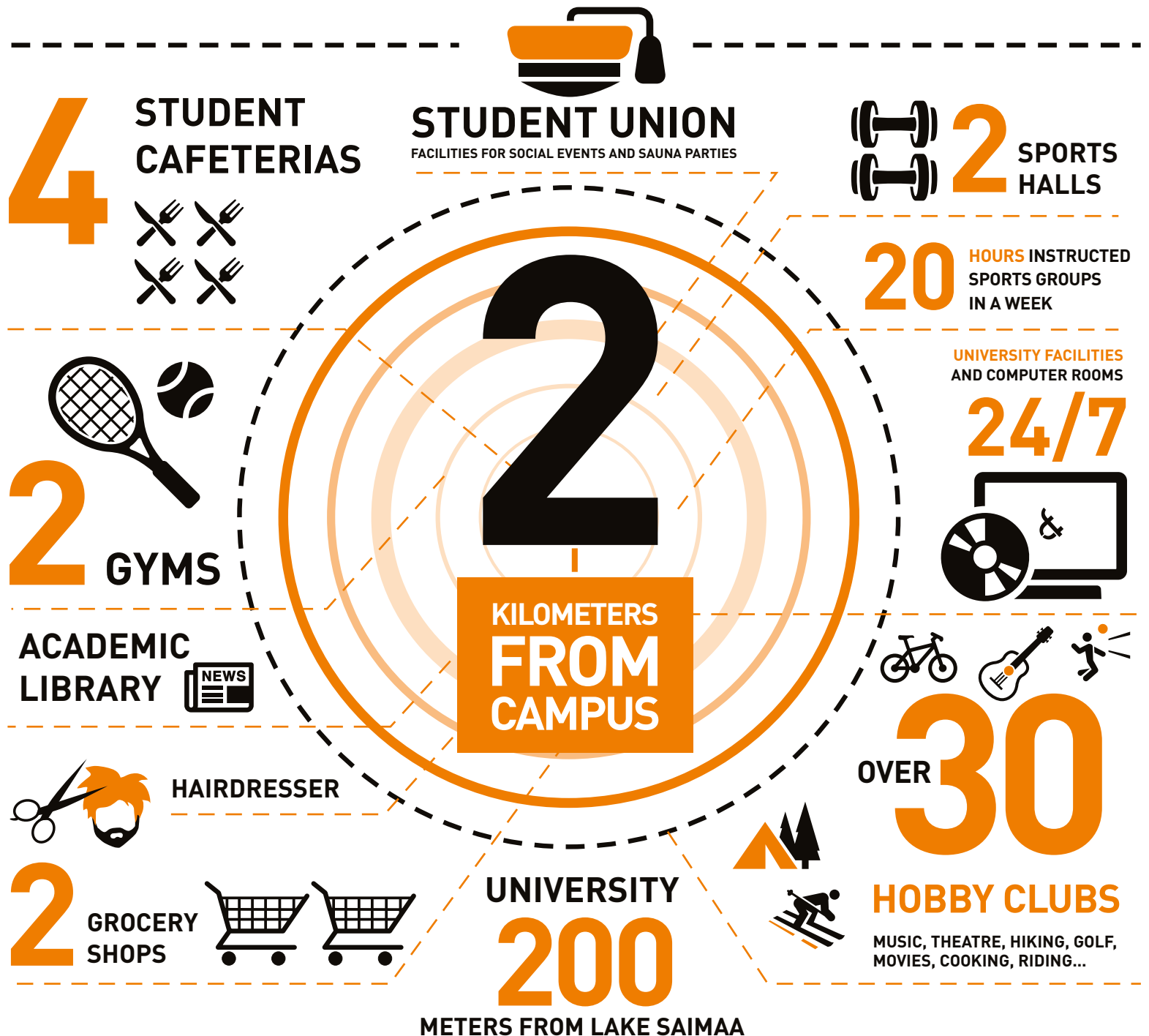
LUT alumnus, Colombia

Fan Engagement/Community manager
Rovio

LUT LIFESTYLE

SKINNARILA, LAPPEENRANTA.

Together with Saimia University of Applied Sciences we form a unique campus which cannot be experienced anywhere else. The compact campus is located just 200 meters from the lake, and it offers students all the services they need – anything from laboratories to library services and restaurants to healthcare services – literally under the same roof.



METERS FROM LAKE SAIMAA

#10

REASONS TO CHOOSE LUT

1

INSPIRING AND HIGH-QUALITY EDUCATION

Lectures, assignments, seminars, tutorials, laboratory assignments, internships, corporate visits, etc. – studies and study methods are continuously developed and new, creative ones are introduced. Small student groups allow teachers and professors to get to know their students on an individual level.

2

COMPACT CAMPUS AREA

The LUT campus is concentrated in one location. Here you can find everything from library to laboratories, from student services to healthcare, all under one roof.

3

CUTTING-EDGE EQUIPMENT & UP-TO-DATE LABORATORIES

Ample, up-to-date computer resources and the newest technology are available for students.

4

GUARANTEED HOUSING ON CAMPUS OR CITY CENTRE

Ample student housing. Rents are comparatively low, and apartments are available both on the campus and in the city centre. An Internet connection is in every room.

5

GET LOCAL

Dive into the Finnish way of life and get connected with local people during your studies by joining the “Meet a Local Family” programme. Application is open only in autumn.

6

EVERYTHING WITHIN EASY DISTANCE

In Lappeenranta, everything is within easy walking distance, and you do not have to spend time commuting.

7

STUDENT LIFE

Go beyond the classroom – LUT has a wide range of clubs and student associations. Get involved, join clubs – you will for sure have memorable experiences, ranging from culture to extreme sports.

8

BE A PART OF OUR SUCCESS STORY

We are one of the top 300 universities in the world. Why not join other great minds?

9

GROW PERSONALLY

New knowledge, new languages, new people – definitely a place for personal growth.

10

LEARNING IS FUNDAMENTAL

LUT in a nutshell? Cool vibes, great parties, events the year round, sports, excursions, always somebody home next door. That is it.



QUOTE ME ON THAT!



In my doctoral studies, I have discovered the global outreach of the research community, which is also nurtured at LUT.

PETR SPODNIAK

**DOCTORAL STUDENT
CZECH REPUBLIC**



LUT was a truly amazing experience. I couldn't have asked for a better summer exchange. The program was exceptionally well-organized, allowing me to grow personally and professionally.

VICTORIA SMITH

**LUT SUMMER SCHOOL STUDENT
CANADA**



Being a part of LUT has been a truly unique experience in my life: the international atmosphere, the green campus and the focus on innovation, the chance to get involved in various extra-curricular activities, and the vibrant university community have made it an experience to remember.

VERONIKA KISELEVA

**LUT MASTER'S DEGREE STUDENT
RUSSIA**



”

Collaboration, freedom and professionalism are the main attributes describing LUT and its environment best.

STANISLAV LEIS

**EXCHANGE STUDENT
GERMANY**



”

It is inspiring to see the perspective that LUT has for sustainability. All the courses that I've done show that sustainability is not the future; it is the reality at LUT!

ANNELÍESI LOPES DA SILVA

**EXCHANGE STUDENT
BRAZIL**

”

Studying on a green campus, where excellence in teaching and research are a commitment, makes us feel confident and keeps us motivated.

HAMEED MOQADAM

**LUT MASTER'S DEGREE STUDENT
IRAN**



OPEN YOUR MIND.

STUDY AT LUT www.lut.fi/admissions



facebook.com/Lappeenranta.University.of.Technology



twitter.com/UniLUT



instagram.com/unilut



youtube.com/lutvideo



LUT

Lappeenranta

University of Technology