



# Sub-Saharan Africa University Rankings 2024

Powered by 

In partnership with



mastercard  
foundation

# Sub-Saharan Africa University Rankings 2024

Powered by 

In partnership with



## Methodology and Participation Webinar

Binta Hussaini, Data scientist

Loubaba El Wazir, Data QA Manager

# Agenda

- Introduction: *THE* and the Sub-Saharan Africa University Rankings
- Ranking Methodology
- Eligibility & How to Take Part
- Institutional Data Collection Demonstration
- Student Survey Instructions
- Q&A



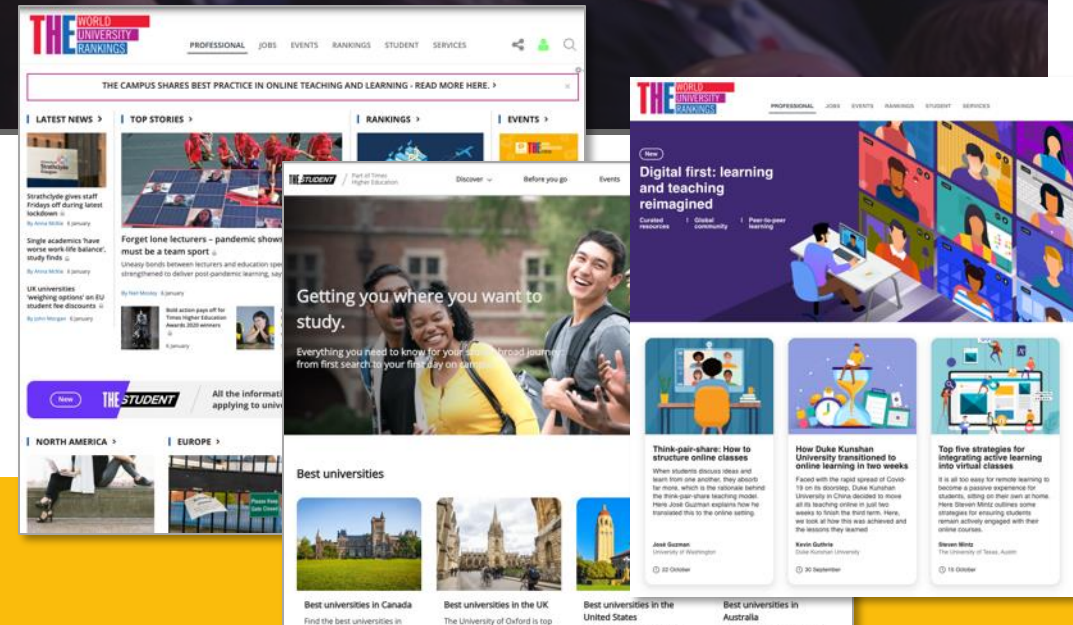
# 50+ years of insights

To help **universities** understand their position against their mission.  
To help **students** find and access the university best suited to their abilities and aspirations.  
To help **higher education** deliver transformational teaching, research and innovation.

1971



2023



Sub-Saharan Africa  
University Rankings 2024

Powered by THE

# Why a Sub-Saharan Africa University Ranking?

## Agenda 2063

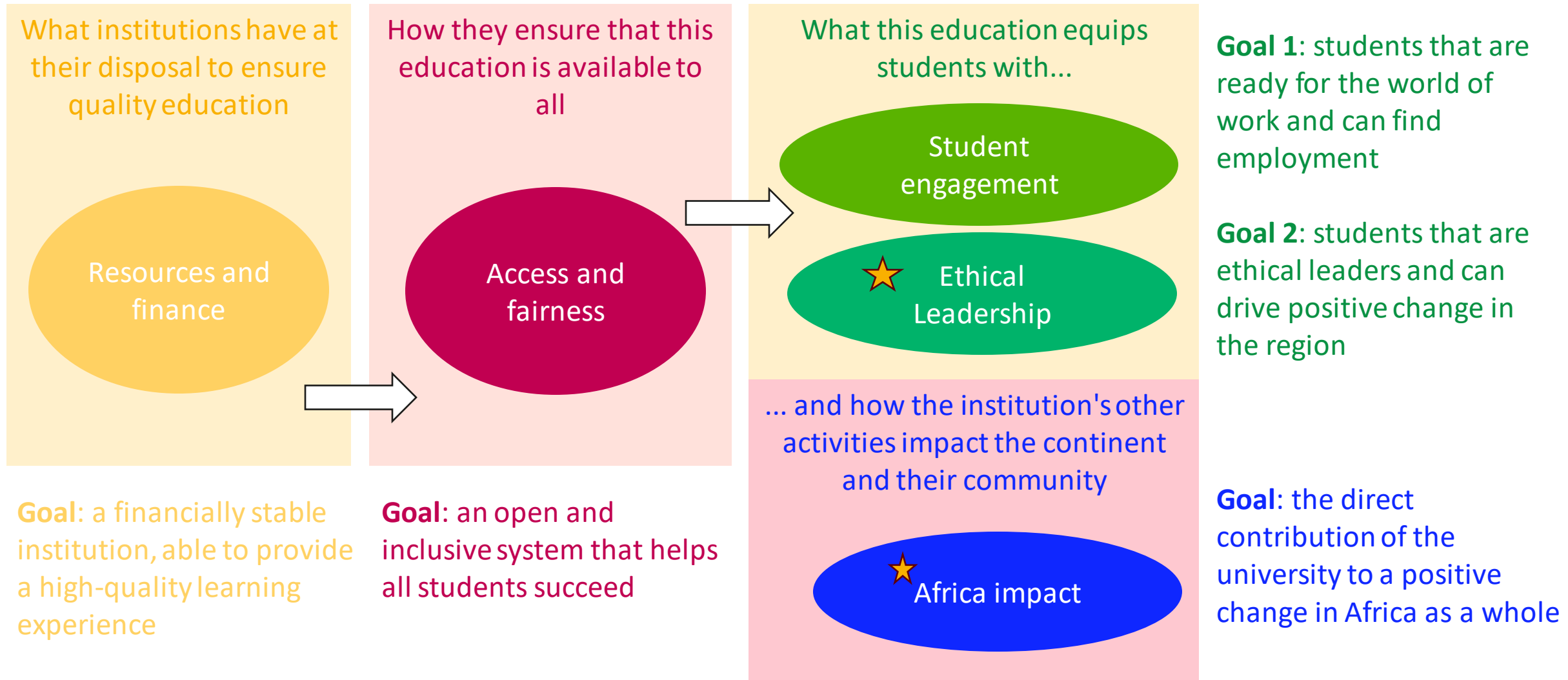
- a prosperous Africa,
- an integrated continent,
- an Africa of good governance,
- a peaceful and secure Africa,
- an Africa with a strong cultural identity,
- an Africa, whose development is people-driven,
- and Africa as a strong, united, resilient and influential global player and partner.

## Challenges

- Leadership,
- Employment,
- Educational quality,
- Funds for universities,
- Infrastructural development

What can universities do to help?  
How can we measure their impact?  
How do they benchmark against their peers?

# Ranking methodology



# New Pillars and Metrics Structure

## Resources and Finance

Faculty-to-student ratio

Finance per student

Funding sources

Continuous professional development

Mental health counselling

Facilities

## Access and fairness

Low-income students receiving financial aid

Proportion of first-generation students

Proportion of female graduates

Affordability

Accessibility

## Student engagement

Experiential learning

Employability

Course quality

Teaching Engagement

## ★ Ethical Leadership

Leadership

Ethics

## Africa Impact

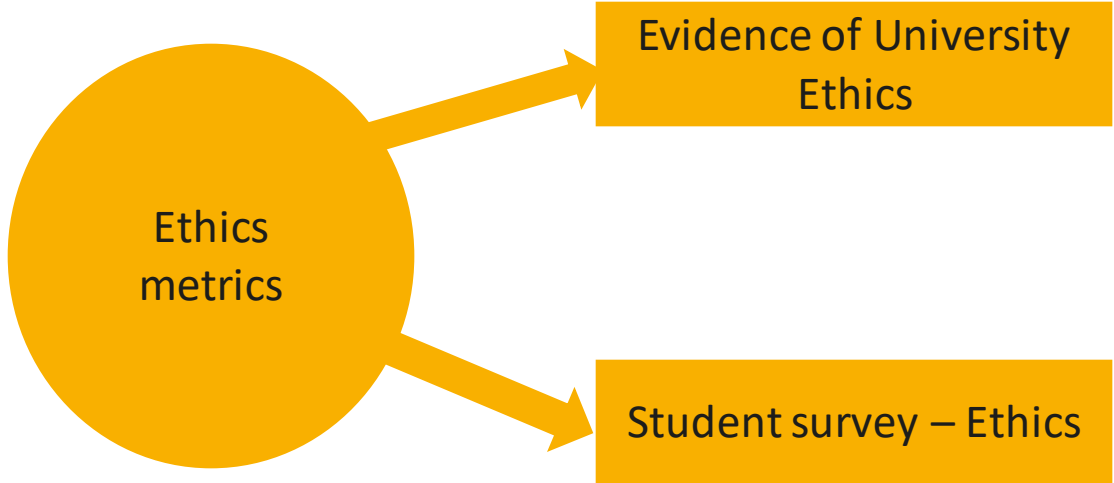
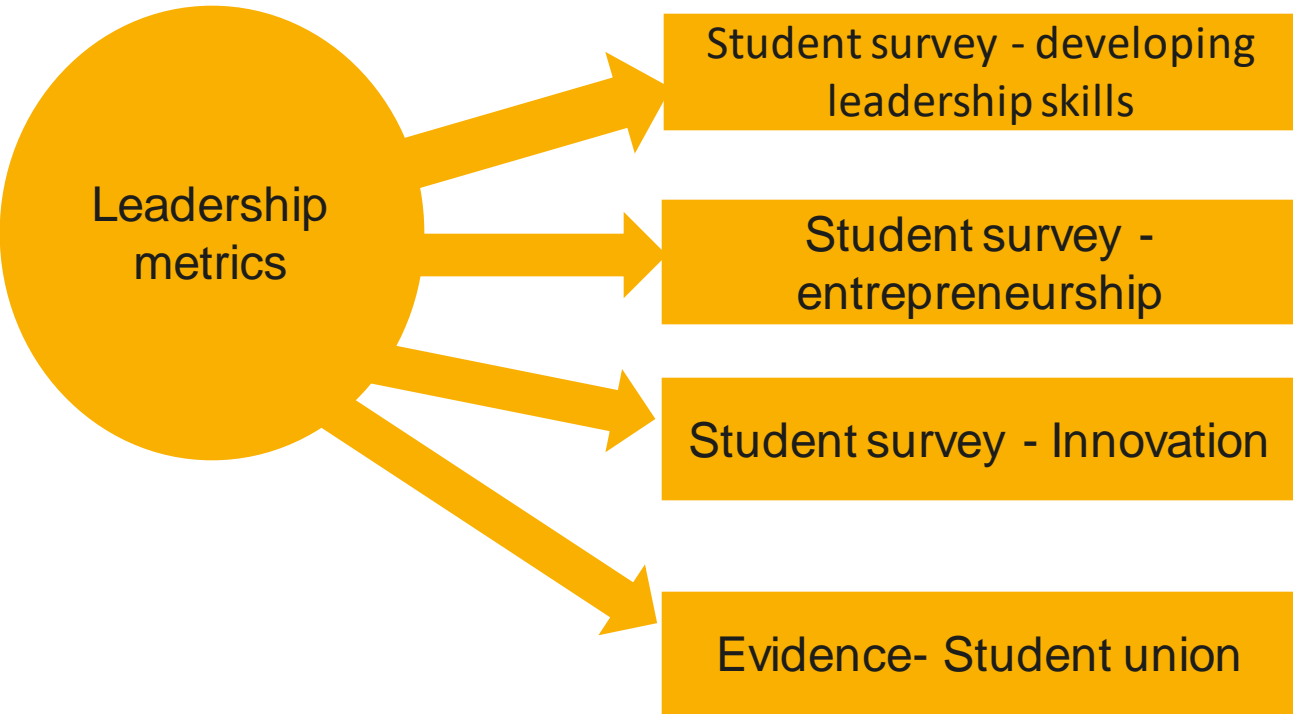
African research citations

African research co-authorship

★ African Heritage

# Changes to the Methodology

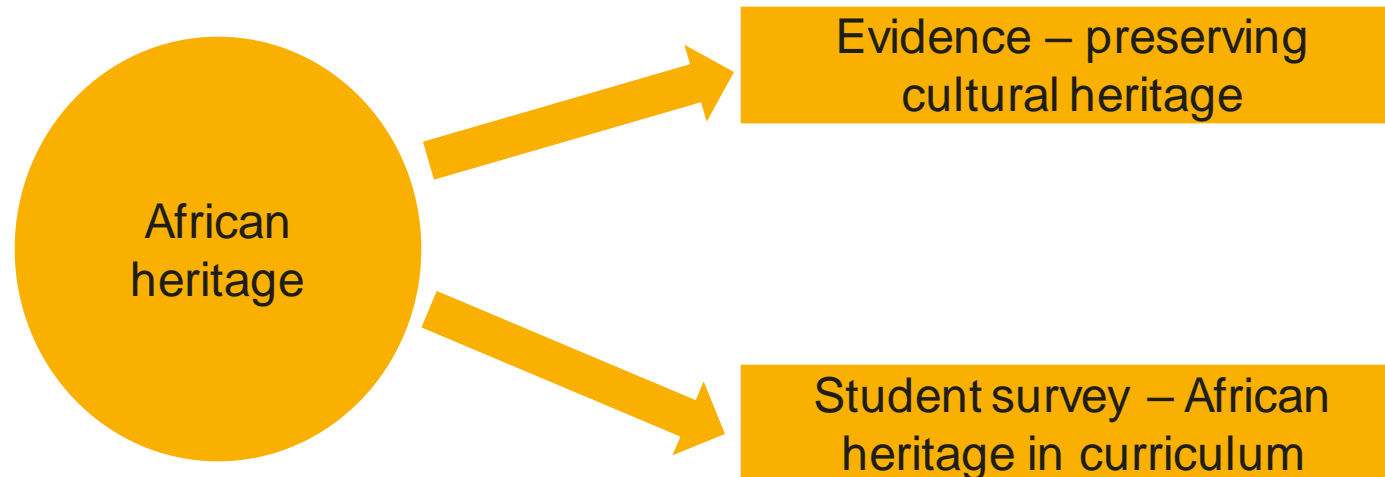
Introduction of the **Ethical Leadership** pillar which seeks to explore the contribution of universities in providing students with a platform to develop leadership and ethical skills and values





# Changes to the African Impact Pillar

Introduction of the **African heritage** metrics which seeks to explore how much a university helps its students value their **African heritage**, either by recording or preserving African cultural heritage or referencing African achievements in their curriculum. This will ensure that students develop a sense of pride in being African



# Sub-Saharan Africa University Rankings 2024

Powered by 

In partnership with



## Eligibility & How to Take Part

# Eligibility

Participation in *THE* SSA Rankings is always free of charge. However, there is a set of eligibility criteria:

- Offering Undergraduate degrees\*

Ranking Table requirements:

- Submit sufficient and valid data in the data collection
- Receive 50 or more valid student responses in the student survey.

# How to Take Part

Nominate data provider & Approver

- Email us at [SSARanking@timeshighereducation.com](mailto:SSARanking@timeshighereducation.com)

Receive Portal and Survey details

- University-unique portal link
- User-unique credentials
- University-unique survey link

Access portal and distribute survey

- Submit data and collect sufficient student responses by 30 March 2024



# Sub-Saharan Africa University Rankings 2024

Powered by 

In partnership with



# Institutional Data Collection Demonstration

# Data Collection Guidelines & Support

- [Data submission guide](#): provides the full guidelines on collecting institutional data and details around each field.
- [Data collection support sheet](#): a template for collating data. Given the data collection length, we encourage you to prepare data in advance of the portal opening where possible.

# Data Collection Guidelines & Tips

- In the case of unusual perimeters (such as additional campuses) please inform *THE*
- Contact details provided on the portal will be contacted for data validation purposes (this should correspond to the main data provider)
- Data year: year ending 2022

• First name/ given name

Loubaba

• Last Name/ family name

El Wazir

Job title

What is your current role at your university?

Data QA Manager

Department

In what department do you work?

Data

• Work Email Address

Please confirm your work email. This is the email we will use if we need to contact you regarding this data.

Loubaba@test.com

Work telephone

Please provide the telephone number where we can reach you at work (please include the country code).

77777777

• University

Please confirm which university you work at and are submitting data for

University of Cape Coast (Ghana)

# Data Collection Guidelines & Tips

- Missing data results in a score of ZERO on corresponding metrics
- Enter whole numbers and do not enter characters
- Always click NEXT to ensure data is saved
- Save copy of your answers after submitting



# Sub-Saharan Africa University Rankings 2024

Powered by 

In partnership with



# Student Survey Instructions

# Student Survey Instructions

Please use this email subject and template in your invitations

Embed your institution's unique survey URL

Circulate with a large sample to collect sufficient responses

➤ You can find full instructions on [Survey instructions](#)

# Student Survey Instructions

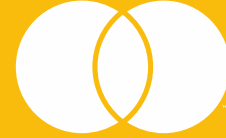
Eligibility for the student survey:

- Active students at your institution
- Aged 18 years or older
- Currently enrolled in an undergraduate programme
- Have been studying at your institution for at least 1 year

# Sub-Saharan Africa University Rankings 2024

Powered by 

In partnership with



mastercard  
foundation

## Q&A